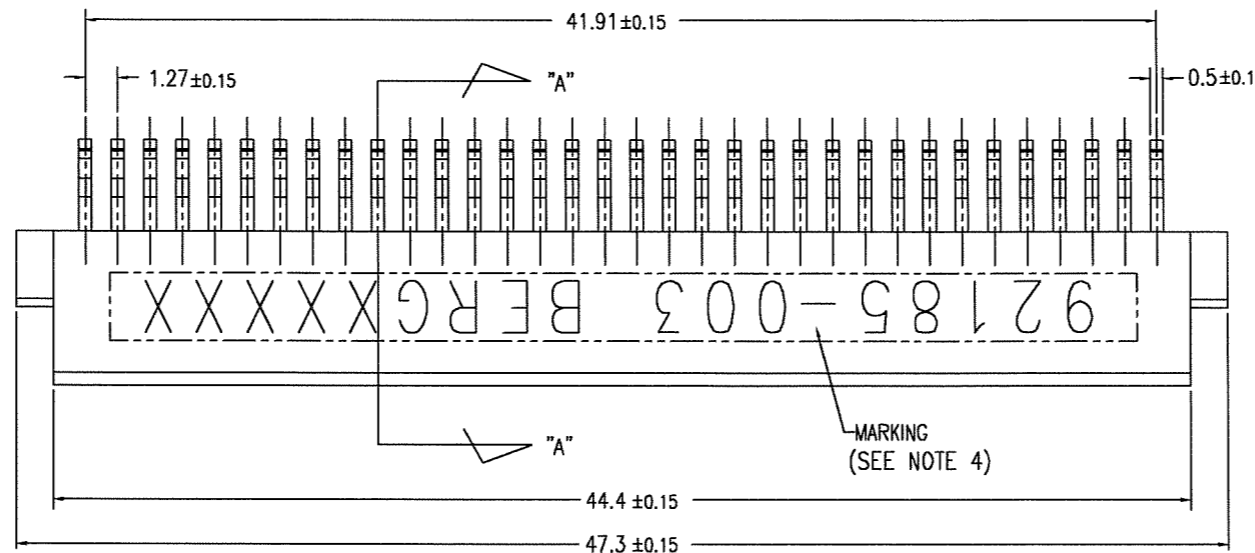
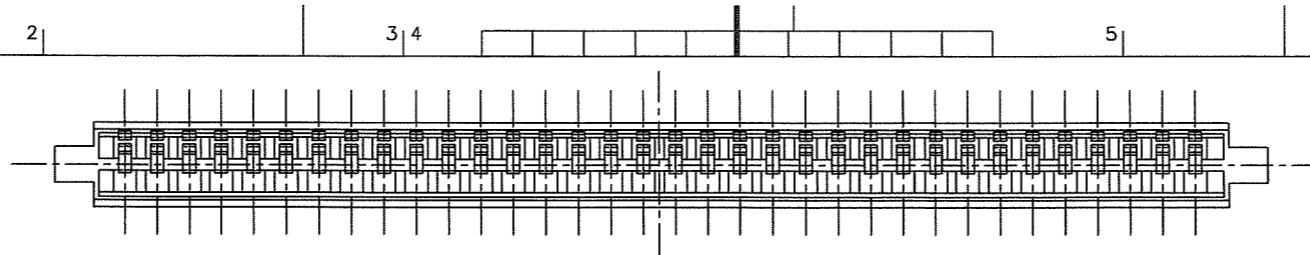
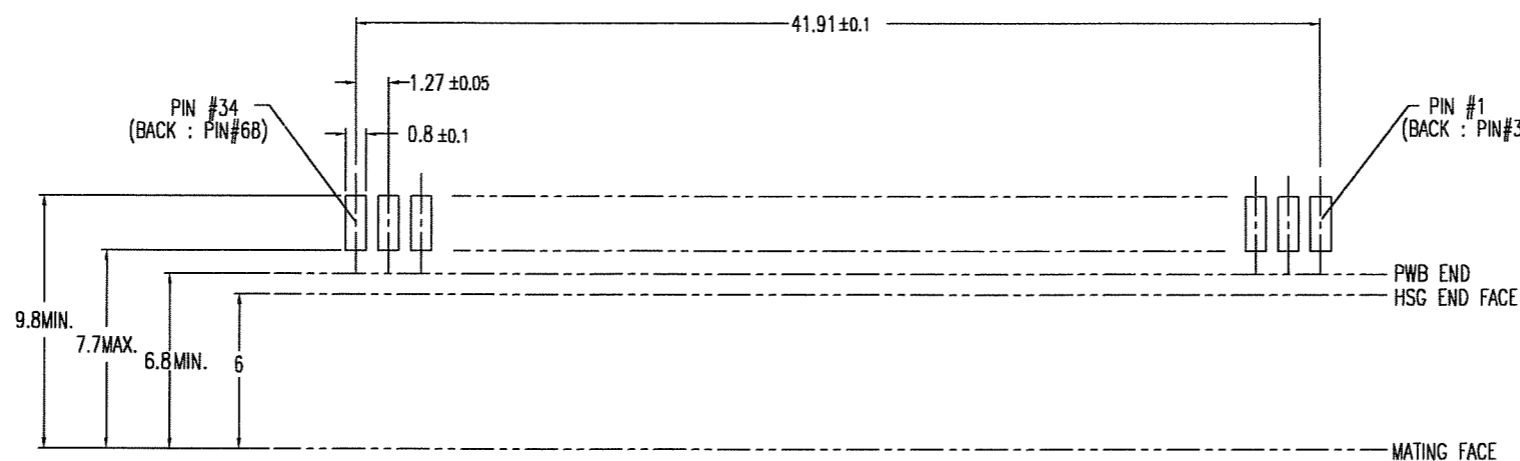
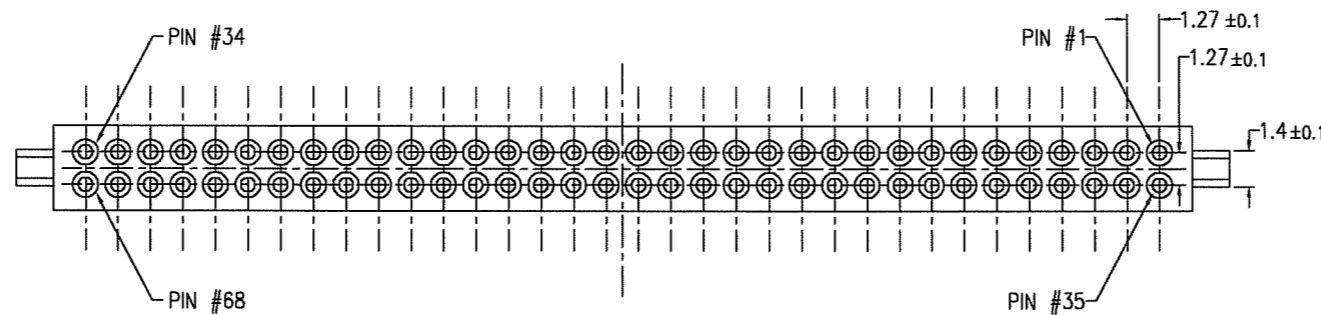


PRODUCT NO.	PLUG HSG COLOR	PACKAGING
92185-003	BLACK	STANDARD TRAY
△ 92185-003A	BLACK	STYROFOAM TRAY
△ 92185-003LF	BLACK	STANDARD TRAY
△ 92185-003ALF	BLACK	STYROFOAM TRAY

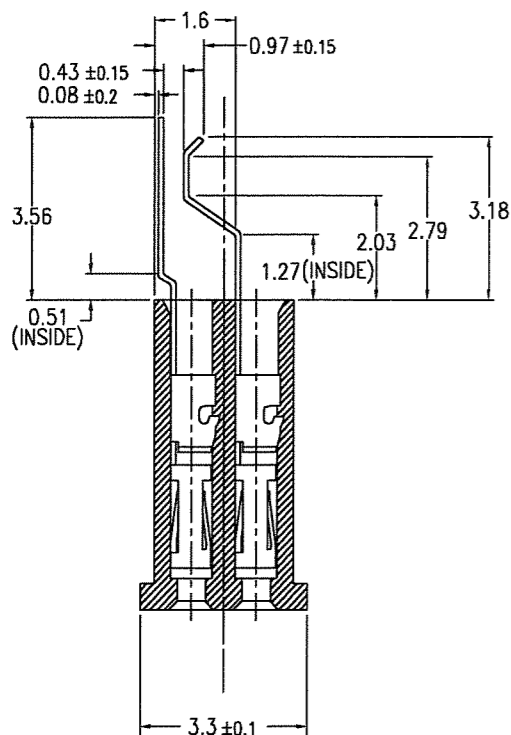
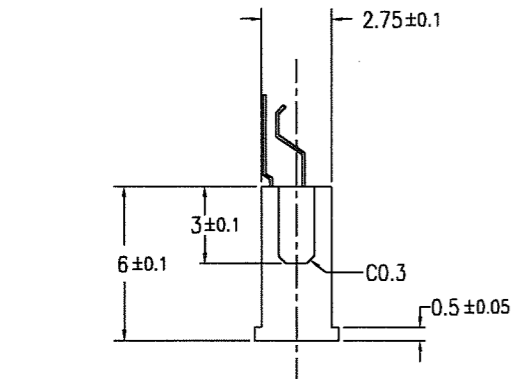


NOTE

- MATERIAL
CONTACT : BeCu 0.08t
HSG. : LCP UL94V-0
FINISH(PLATING)
CONTACT : ALL OVER ----- Ni UNDER 0.5µm THK. MIN.
SELECTIVE ----- Au PLATING 0.1µm THK. MIN.
OVER Pd-Ni PLATING.
SOLDER TAIL ----- TIN LEAD 2.5µm THK. MIN.
- FOR MATING MALE CONN.(HDR./EJECTOR HDR.)
TO APPLY 68POS. MALE CONN.(HDR./EJECTOR HDR.) BASED ON
JEIDA AND PCMCIA SPECIFICATION
- GENERAL TOLERANCE : ±0.25
- MARKING : "92185-003 BERGXXXX" (XXXX : LOT No.)
- RECOMMENDED PWB THICKNESS : 0.38 TO 0.53
- 92185-003LF, -003ALF FINISH(PLATING)
CONTACT : ALL OVER ----- Ni UNDER 0.5 µm THK.MIN.
SELECTIVE ----- Au PLATING 0.1 µm THK.MIN.
OVER Pd-Ni PLATING.
SOLDER TAIL ----- Au 0.1 µm THK. MIN.
- THIS LF SUFFIX PRODUCT MEETS EUROPEAN UNION DIRECTIVES
AND OTHER COUNTRY REGULATIONS AS DESCRIBED IN GS-22-00B.



RECOMMENDED PWB FOOTPRINT LAYOUT



SECTION "A"- "A"

mat'l. code		surface		tolerance		projection		product family		CODE	
---		ISO 1302		ISO 406		mm		SB1F - PCMCIA RECEPTACLE		JP	
ISO 1101		tolerances unless otherwise specified		0.X ±0.25		mm		title		sheet 1 of 1 size	
1	SKETCHED	ecn no	dr	date	angles	linear	0.XX ±0.25	IC CARD CONN.		A2	
A	REVISED	J40136	KS	8/25/92	0°±X'	0.XXX ±0.25	scale 5:1	68POS. PLUG ASSY		Rev. D	
B	REVISED(ADDED-003A)	J40146	KS	4/28/94				dwg no		92185	
C	REVISED	J05-0743	R.S	2/15/06	dr	R.SHOUJI	9/6/06	sheet 1 of 1 size		A2	
D	REVISED	J06-0354	R.S	9/6/06	enrg	R.SHOUJI	9/6/06	type		Product Customer Drawing	
sheet index		revision sheet		D							

FCI CONFIDENTIAL

FCI
FCIconnect.cj@fc