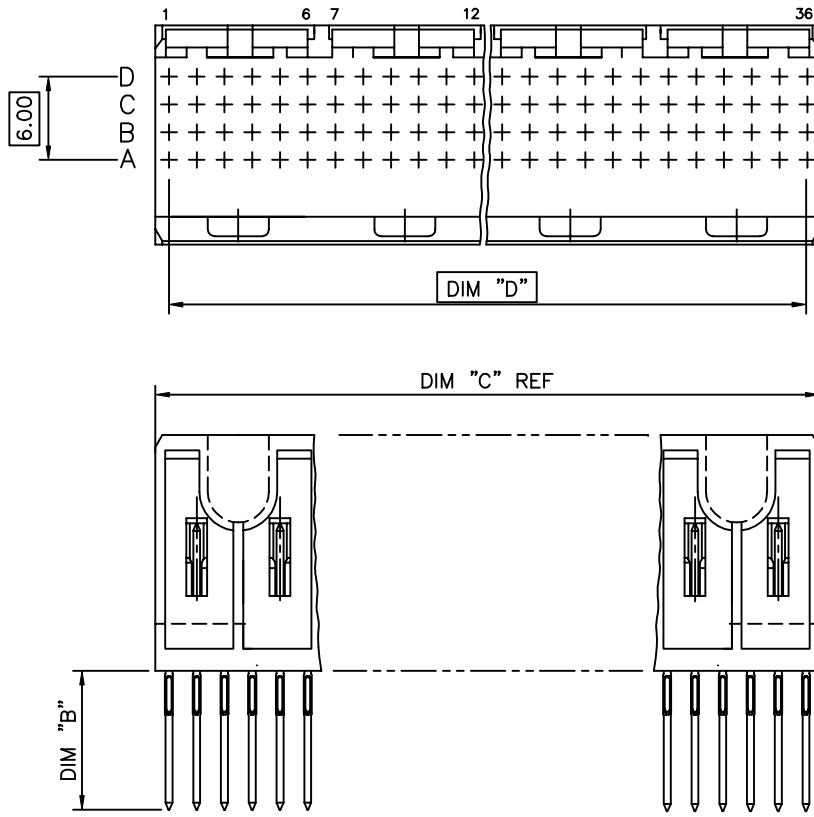


PRODUCT NO.  
70465-XXXX



NOTES:

- FOR DIM "A", "B", "C", "D", "E" AND "F", SEE 70465 SHEET 4.
- BODY MATERIAL: LIQUID CRYSTAL POLYMER 30% GLASS.
- PIN MATERIAL: PHOSPHOR BRONZE.
- PLATING ON PRESS-FIT AREA SnPb.
- PRODUCT MARKING: PART NUMBER & BATCH I.D.
- THIS PLATING HAS BEEN QUALIFIED TO THE CRITERIA FOR THE QUALITY LEVEL III FOR THE UNCONTROLLED ENVIRONMENT AS DEFINED BY BELLCORE SPECIFICATION GR-1217-CORE.

Tous droits strictement reserves. Reproduction ou communication a des tiers interdite sous quelque forme que ce soit sans autorisation écrite du propriétaire. Propriete de c FCI. Droits de reproduction FCI.

All rights strictly reserved. Reproduction or issue to third parties in any form whatever is not permitted without written authority from the proprietor. Property of FCI. Copyright FCI.



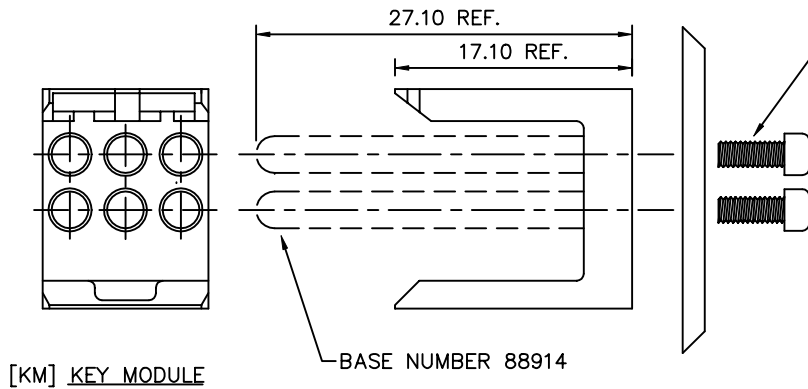
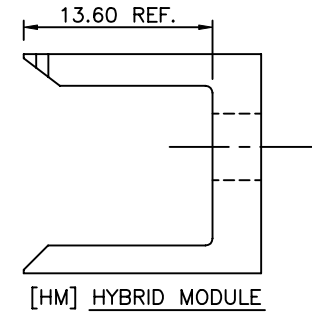
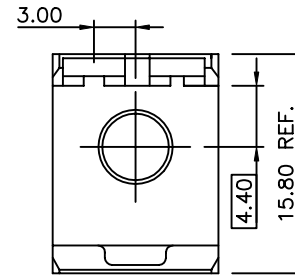
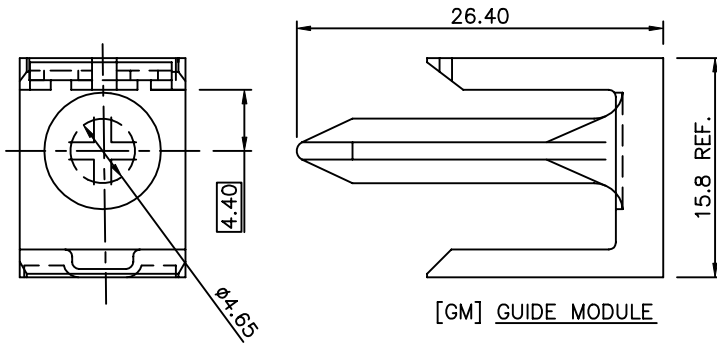
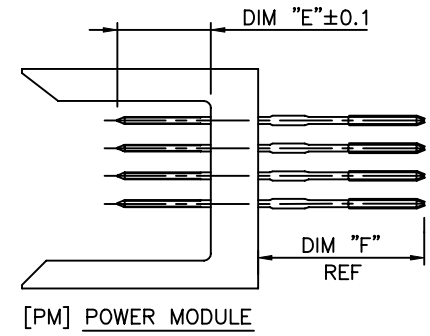
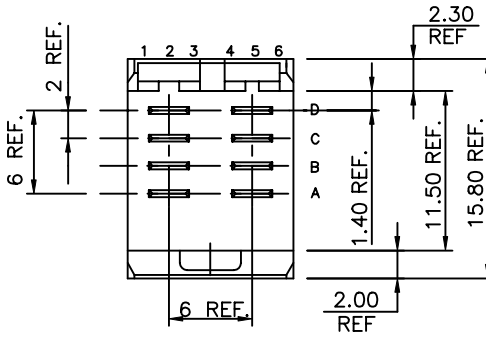
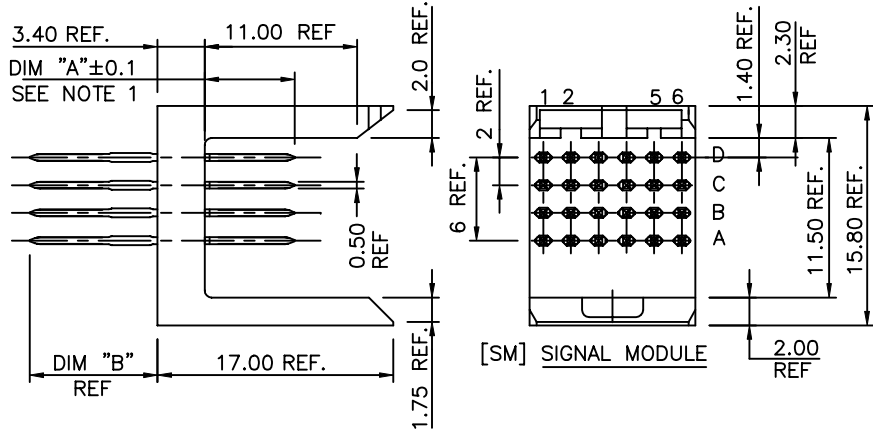
PRESS-FIT HOLES	
HOLE DIAMETER AFTER PLATING	0.65 - 0.80
DRILLED HOLE	0.81 - 0.86 (0.85 DRILL)
COPPER PLATING	0.025 MIN.
TIN PLATING	0.005 - 0.015

PLATING IN CONTACT AREA		
PLATING CODE	THICKNESS	UNDERPLATING
-1YYY	0.8 μm GOLD	1.3 μm Ni MIN.
-2YYY	2.0 μm GOLD	1.3 μm Ni MIN.
-3YYY	1.3 μm GOLD	1.3 μm Ni MIN.
-5YYY	SEE NOTE 6	SEE NOTE 6
-9YYY	0.8 μm GXT	1.3 μm Ni MIN.

mat'l. code				tolerances unless otherwise specified				CUSTOMER COPY		Electronics www.fciconnect.com		
ltr	ecn no	dr	date	linear	.XX±.13			projection		title		
A	V70438	MDF	3/31/97		.XX±.13					STR. HYBRID P.F. HDR. ASSEMBLY, 4 ROW, 96mm		
B	V80057	MDF	1/22/98	angles	.XXX±.051					product family METRAL		
C	V81774	MDF	9/28/98		0° ±2°			MM		code size		
D	V12679	CGD	11/13/01	dr	M. FETROW	12/13/96	enr	C. PENDLETON	12/13/96	213		
				chr	C. PENDLETON	12/13/96	appd	C. PENDLETON	12/13/96	sheet		
				appd	C. PENDLETON	12/13/96	scale 1:1		A		70465	
sheet index				revision		D D		D D		cage code		
1 2				1 2		3 4		3 4		22526		

Tous droits strictement reserves. Reproduction ou communication a des tiers interdite sous quelque forme que ce soit sans autorisation écrite du propriétaire. Propriete de c FCI. Droits de reproduction FCI.

All rights strictly reserved. Reproduction or issue to third parties in any form whatever is not permitted without written authority from the proprietor. Property of FCI. Copyright FCI.

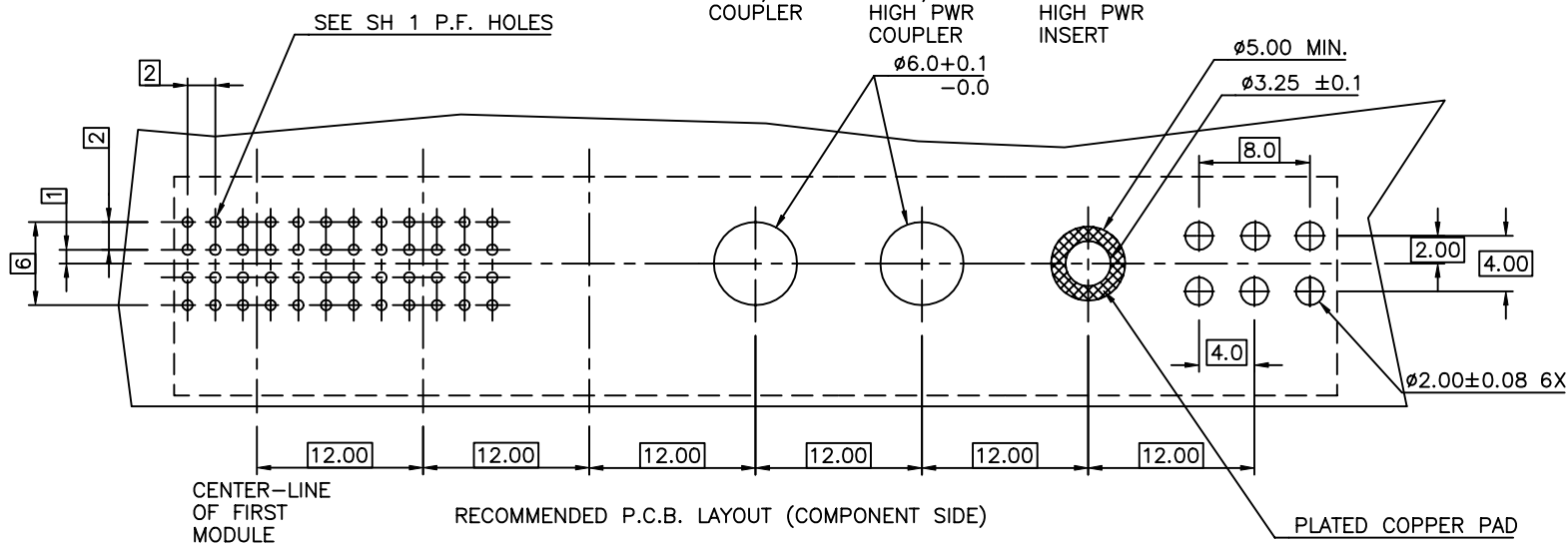
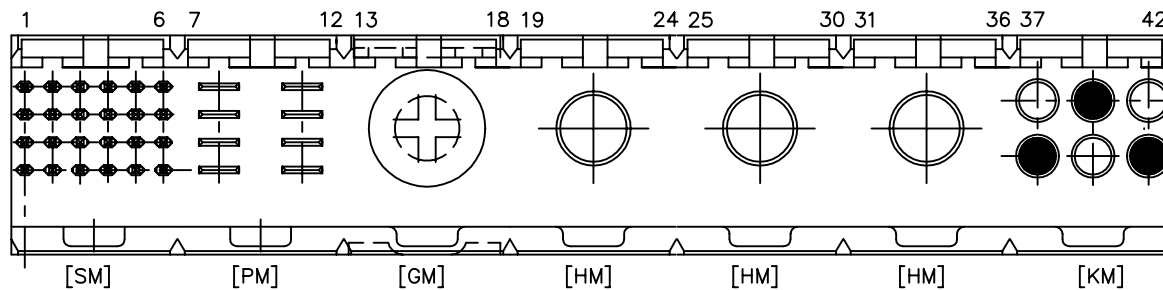


BASE NUMBER 88914

BASE NUMBER 88914

mat'l. code				tolerances unless otherwise specified				CUSTOMER COPY		FCI Electronics www.fciconnect.com			
ltr	ecn no	dr	date	linear	.XX±.3		projection	title		STR. HYBRID P.F. HDR. ASSEMBLY, 4 ROW, 96mm			
D					.XX±.051								
				angles	0° ±2°		MM		product family METRAL		code		
				dr	M. FETROW	12/13/96	scale 1:1		A 70465		213		
				enr	C. PENDLETON	12/13/96					size	dwg no	sheet
				chr	C. PENDLETON	12/13/96					2 of		
				appd	C. PENDLETON	12/13/96							
sheet index	revision sheet												

# ILLUSTRATION OF ALL MODULE TYPES



mat'l. code --				tolerances unless otherwise specified		CUSTOMER COPY		 www.fciconnect.com				
ltr	ecn no	dr	date	linear	.X±.3	projection		title				
D					.XX±.13			STR. HYBRID P.F. HDR. ASSEMBLY, 4 ROW, 96mm		code		
				angles	.XXX±.051		MM	product family				
				dr	0° ±2°			METRAL		code		
				enr	M. FETROW 12/13/96	scale	1:1	size		sheet		
				chr	C. PENDLETON 12/13/96			A			213	
				appd	C. PENDLETON 12/13/96			70465			3 of	
sheet index	revision sheet											

Tous droits strictement reserves. Reproduction ou communication a des tiers interdite sous quelque forme que ce soit sans autorisation ecrite du proprietaire. Propriete de c FCI. Droits de reproduction FCI.

All rights strictly reserved. Reproduction or issue to third parties in any form whatever is not permitted without written authority from the proprietor. Property of FCI. Copyright FCI.

Tous droits strictement reserves. Reproduction ou communication a des tiers interdite sous quelque forme que ce soit sans autorisation ecrite du proprietaire. Propriete de c FCI. Droits de reproduction FCI.

All rights strictly reserved. Reproduction or issue to third parties in any form whatever is not permitted without written authority from the proprietor. Property of FCI. Copyright FCI.

Main assembly drawing table with columns for PRODUCT NO, DIM "C", DIM "D", ROW, and 48 numbered pins. It includes data for products 70465-X001 through 70465-X006, showing pin configurations and module types (PM, SM, GM, KM).

SIGNAL PIN KEY table with columns: CODE, DIM "A", DIM "B". Rows: 01 (5.00, 4.30), 02 (5.75, 4.30), 03 (6.50, 4.30), 04 (7.25, 4.30), 06 (5.75, 13.60), 07 (6.50, 13.60), 08 (7.25, 13.60), 19 (8.00, 4.30).

POWER PIN KEY table with columns: CODE, DIM "E", DIM "F". Rows: P01 (6.50, 4.30), P02 (7.25, 4.30), P03 (8.00, 4.30).

Technical drawing header block containing: mat'l. code, tolerances unless otherwise specified, CUSTOMER COPY, FCI Electronics logo, title (STR. HYBRID P.F. HDR. ASSEMBLY, 4 ROW, 96mm), product family (METRAL), code (213), size (dwg no 70465), sheet (4 of 4), scale (1:1), and sheet index/revision information.