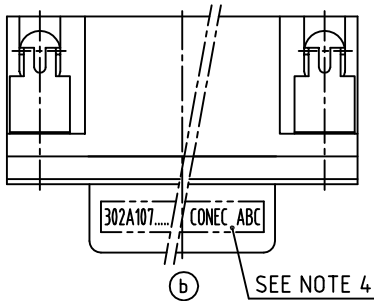
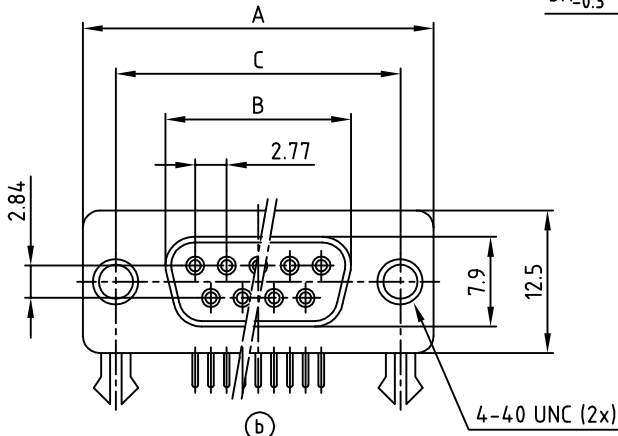
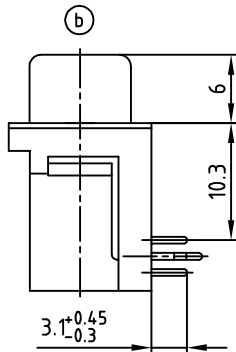
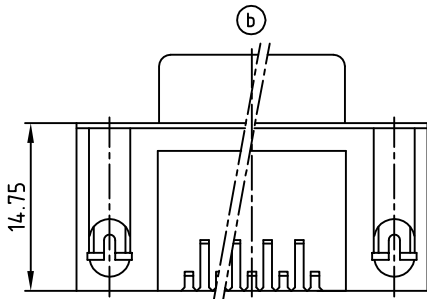
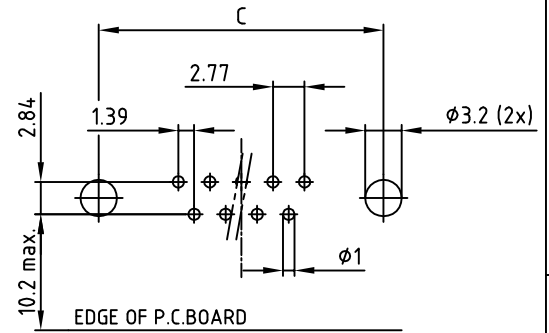


POS.	A	B	C	PART-NO.
9	30.8	16.3	25.0	302A10739X
15	39.2	24.6	33.3	302A10749X
25	53.1	38.3	47.1	302A10759X
37	69.4	54.8	63.5	302A10769X



used for: D-SUB



(b) RECOMMENDED P.C.B LAYOUT (TOP VIEW)
TOLERANCES: ±0.05mm

(b) SPECIFICATION

- MATERIAL**
Insulator: Thermal Plastic UL94V-0
Contacts: Copper Alloy
Shell: Steel
Rivet, Boardlock: Copper Alloy
- CONTACT PLATING**
Underplate: 50µin Nickel
Contact Area: Gold Flash
Solder Tails Area: Gold Flash
- ELECTRICAL**
Operation Voltage: 250 VAC Max.
Current Rating: 3 Ampere
Contact Resistance: 15 m Ohm
Insulation Resistance: 3000 M Ohm Min @ 500 VDC
Dielectric Withstanding Voltage: 1000 VAC / Minute
Operating Temperature: -55°C TO +105°C
- CONNECTOR IS PART MARKED:** PART-NO. CONEC ABC

APPROVAL # FREIGABE # DEBLOCAGE # AUTORIZACION # APPROVAL	
CUSTOMER APPROVAL DATE:	
NAME:	TITLE:
COMPANY NAME:	
APPROVAL # FREIGABE # DEBLOCAGE # AUTORIZACION # APPROVAL	



THIS DRAWING MAY NOT BE COPIED OR REPRODUCED IN ANY WAY, AND MAY NOT BE PASSED ON TO A THIRD PARTY WITHOUT WRITTEN PERMISSION.
OWNERSHIP AND COPYRIGHT OF CONEC GmbH DO NOT ALTER CAD DRAWING BY HAND

tolerance		dim. in mm	
(b)	0.00	±0.5	±0.2
	0.00	±0.3	±0.2
	0.00	±0.2	±0.2
1998	date	name	
drawn	15.06.	Barcinski	
appd.	15.06.	Mickenbecker	
norm			
d-old			
7 x b	Ä 3229	18.12.2008	Lehmen.
a	Origin		
rev.	description	date	name



scale:	2:1	
material:	SEE NOTES	
title:	D-SUB R/A FEMALE 90° 9-37pos.	
dwg no:	AutoCAD 2006	DIN-A
	16K11EWA	4
part no:	SEE TABLE	
		sh: 1/1