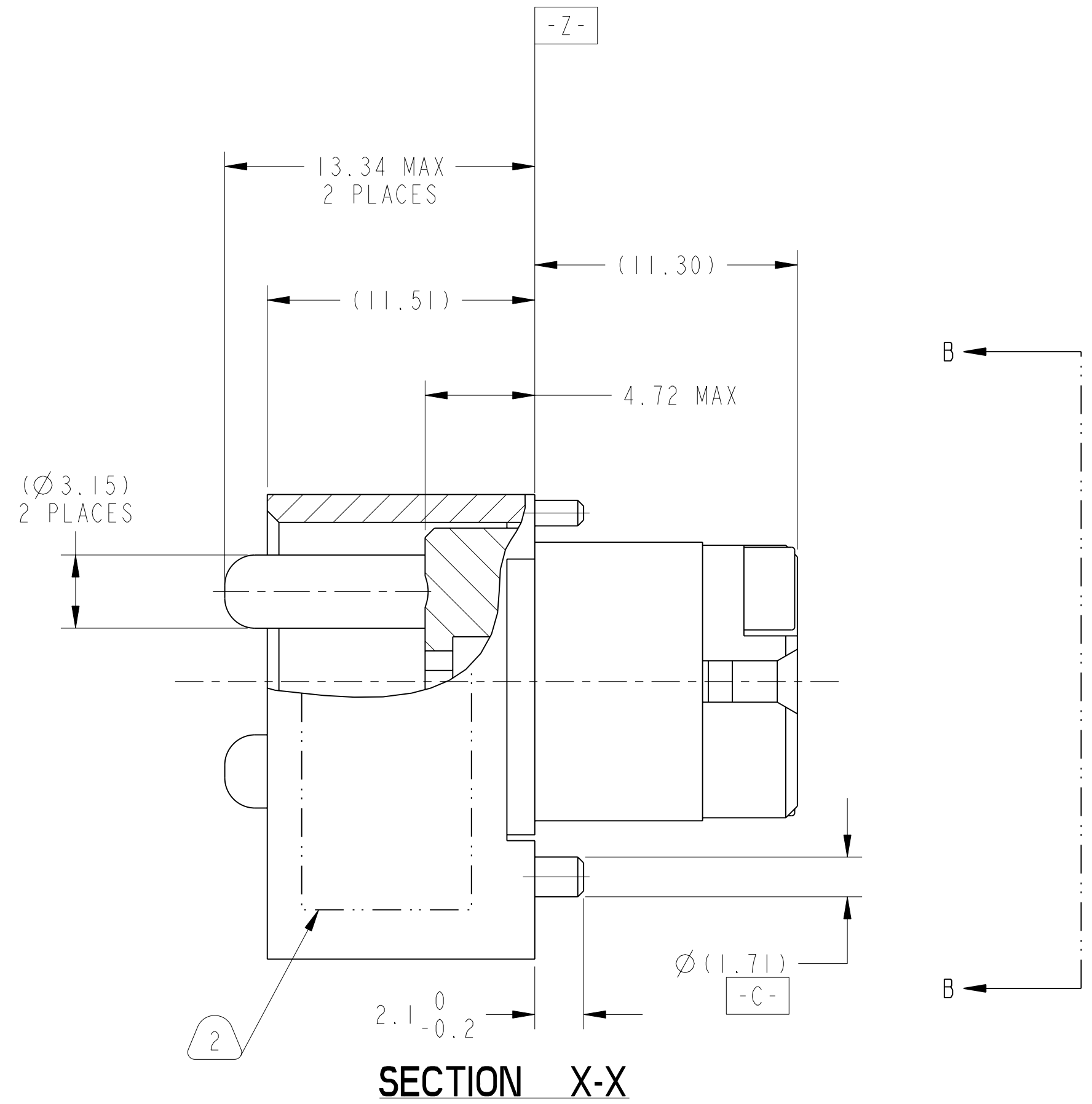
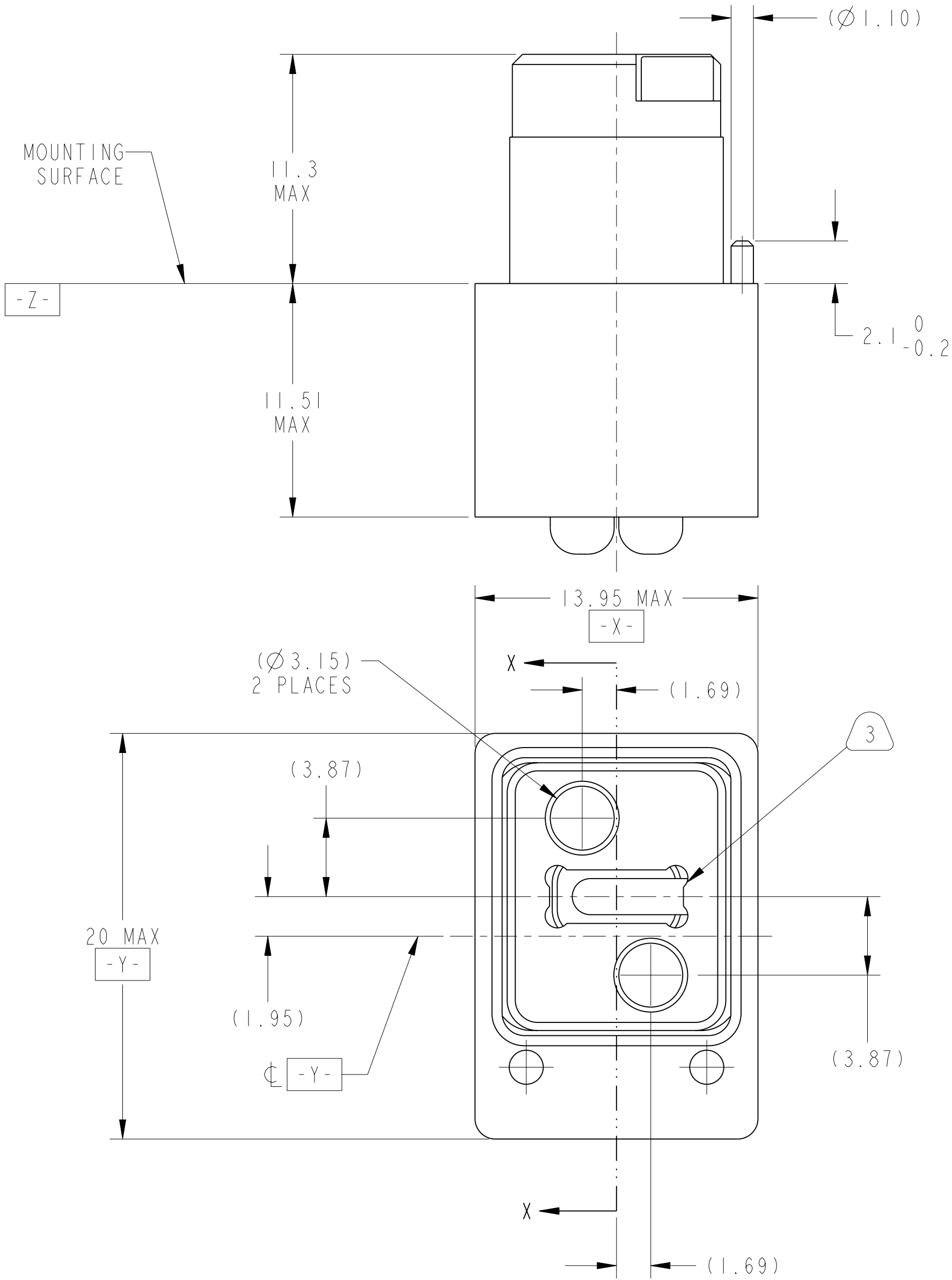


REV. PA1	SHEET 1 OF 3	DOCUMENT NO. 10-504639-010
REVISIONS		
LTR	DESCRIPTION	DATE
PAI	INITIAL RELEASE	4/3/18



SECTION X-X

METRIC DRAWING

SEE SHEET 3

**NOTES:**  
 THE USE OF THIS DOCUMENT IS UNLIMITED. HOWEVER, DOCUMENTS REFERENCED HEREON MAY CONTAIN LIMITED RIGHTS DATA.

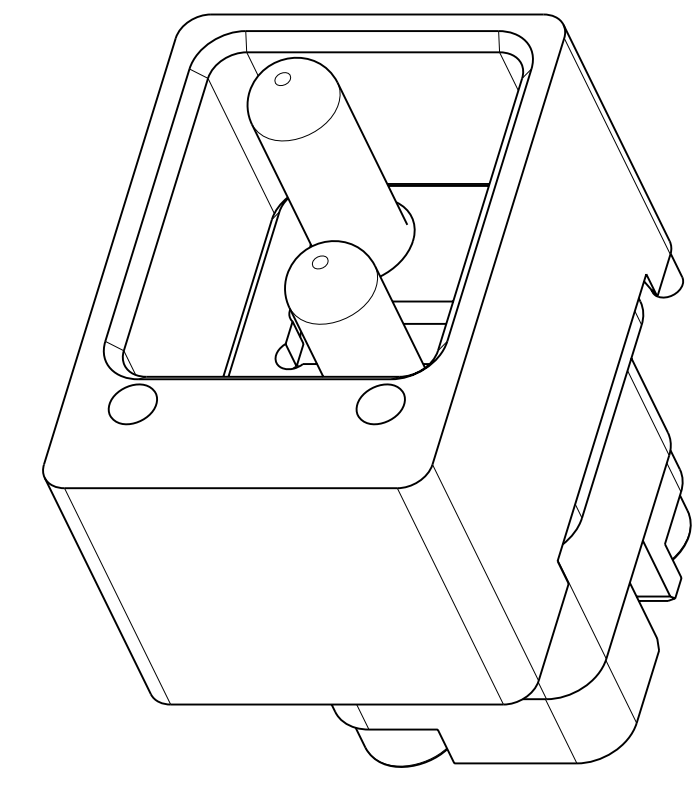
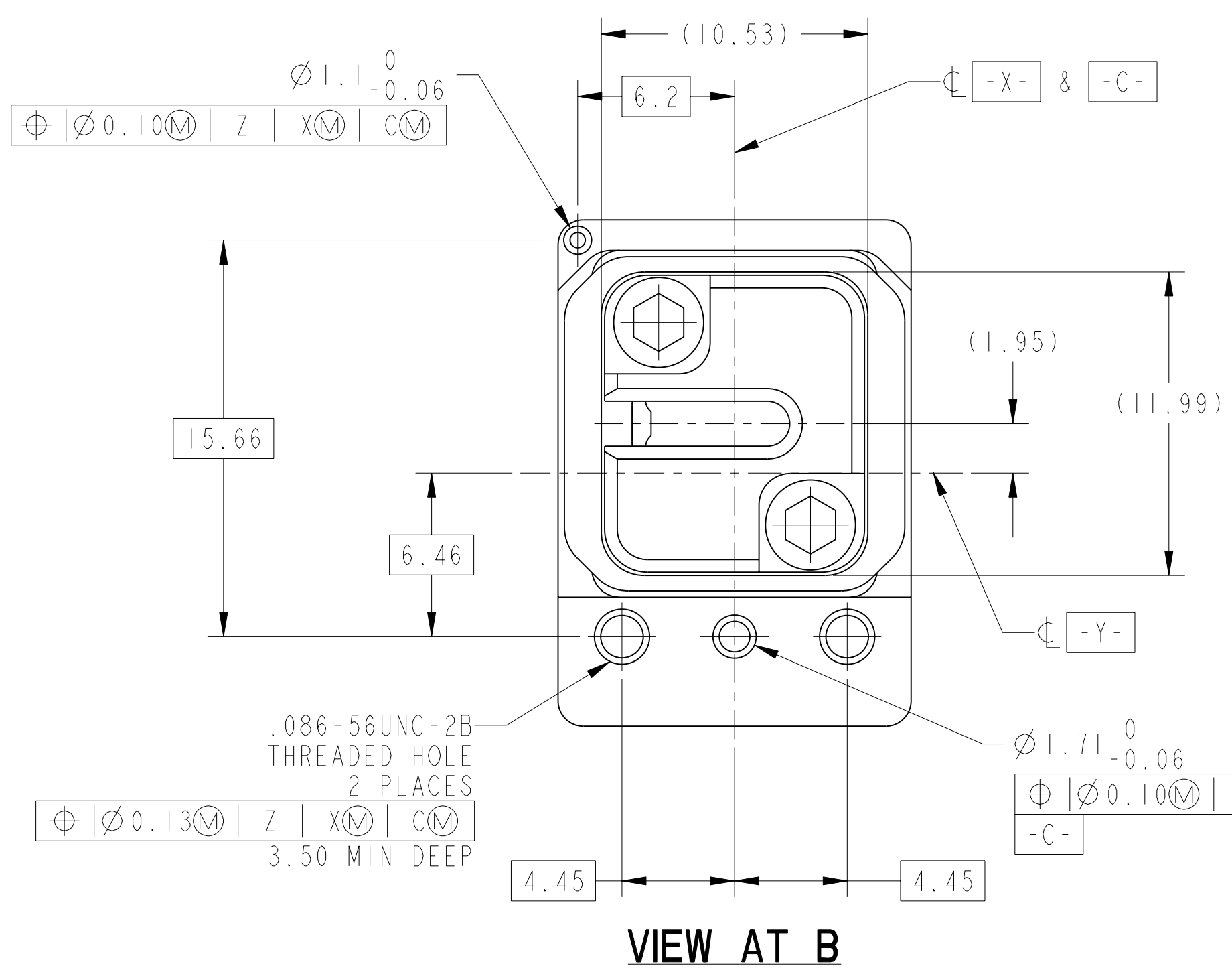
SCALE 5.000

UNLESS OTHERWISE SPECIFIED	SPECIFICATIONS	POS	QTY	PART NUMBER	DESCRIPTION	NOTE
LINEAR DIMENSIONS ARE IN MILLIMETERS TOLERANCES: .XXXX = NA ANGLES = ±2° .XXX = ±NA .XX = ±.13 .X = ±.25 DIM. & TOL. PER ASME Y14.5M; DRM PER MIL-DTL-31000; OTHER Amphenol Sids. PER 9-3800 LEGENDS: = FLAG NOTE CALL OUT REFERENCE ONLY	MATERIAL SPEC.	PARTS LIST <b>AMPHENOL CORPORATION</b> 40-60 DELAWARE AVENUE SIDNEY, N.Y. 13839 <b>CONNECTOR, FIBER OPTIC, BACKPLANE,            1 MT SPECIAL, SPRING LOADED            (VITA 66.4 ENVELOPE)</b>				
	NONE					
PROCESS SPEC.	9-3856-5 9-3895	APPROVALS	DATE	PREPARED BY R. CHAPMAN ENGINEER IN CHARGE E. HICKEY DESIGN MANAGER R. SELFRIDGE DESIGN ACTIVITY GROUP BLP 03-Apr-18 THIRD ANGLE PROJECTION		
NONE				SIZE C	CAGE CODE 77820	DOCUMENT NO. 10-504639-010 REV. PA1
				SCALE: 3.0	REF: 10-504639-006	SHEET 1 OF 3

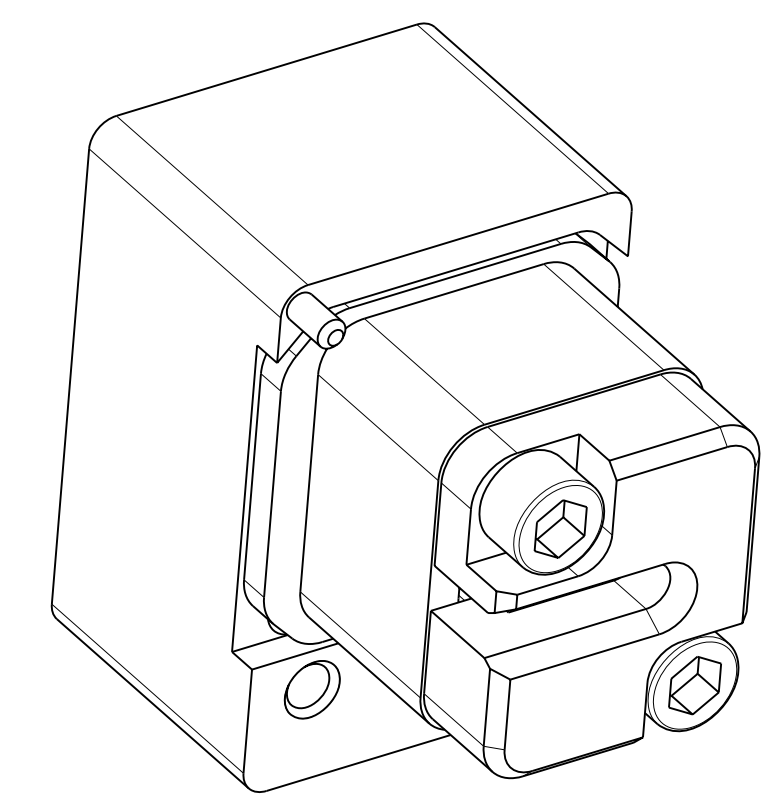
NONE	PRO/ENGINEER INFORMATION
	Pro/e Model Used:
	10-504639-010.DWG.ASSEM
	Drawing Name:
	10-504639-010
NONE	NEXT ASSEMBLY

DOCUMENT NO. 10-504639-010  
 SHEET 1 OF 3  
 REV. PA1  
 C  
 B  
 A

DOCUMENT NO. 10-504639-010  
 SHEET 1 OF 3  
 REV. PA1  
 C  
 B  
 A



TOP ISO VIEW  
SCALE 4.000



BOTTOM ISO VIEW  
SCALE 4.000

7. FOR CONNECTOR INSTALLATION ILLUSTRATION SEE SHEET 3.
6. FOR MATING MODULE CONNECTOR ASSEMBLY, SEE DRAWING 10-504637-012.
5. TIGHTEN CAPTIVE SCREWS TO 10-14 IN-OZ AFTER INSTALLING MT FERRULE (NOT INCLUDED).
4. FIBER OPTIC INSERT IS DESIGNED FOR MT TYPE FERRULES TERMINATED TO NON-STRENGTH MEMBERED RIBBON CABLE. MT FERRULE, PIN CLAMP ASSEMBLIES AND ASSOCIATED RIBBON CABLE ARE NOT PART OF THIS ASSEMBLY.
3. INDICATED CAVITY WILL ACCOMODATE A STANDARD 12 CHANNEL MT FERRULE PER IEC 61754-5 (SEE NOTE 4).
2. BLACK INK STAMP "AMPH 77820" PART NUMBER AND DATE CODE ON INDICATED SURFACE PER 9-3856-5. DATE CODE PER 9-3895. CHARACTERS TO BE 1.6±.51 (.062±.020) HIGH. ADDITIONAL INFORMATION MAY BE REQUESTED BY PURCHASE ORDER.
1. PARTS ARE SHIPPED UNASSEMBLED.

**MATERIALS AND FINISHES**

COMPONENT	MATERIAL/ FINISH
BACKPLANE SHELL	BODY - MATERIAL - ALUM. ALLOY PER AMS 4150 FINISH - CHROMATE TREATMENT PER MIL-C-5541, CL 3 HELICAL INSERTS - STAINLESS STEEL 304 SERIES PASSIVATED
INSERT ASSEMBLY	FRONT INSERT/RETAINER - MATERIAL - ALUM ALLOY PER AMS 4150 FINISH - CHROMATE TREATMENT PER MIL-C-5541, CL3 SCREW - STAINLESS STEEL 300 SERIES, PASSIVATED HELICAL INSERTS - STAINLESS STEEL 304 SERIES, PASSIVATED GUIDE PIN - STAINLESS STEEL PER AMS 5640. PASSIVATED

THE USE OF THIS DOCUMENT IS UNLIMITED. HOWEVER, DOCUMENTS REFERENCED HEREON MAY CONTAIN LIMITED RIGHTS DATA.

SIZE <b>C</b>	CAGE CODE <b>77820</b>	DOCUMENT NO. <b>10-504639-010</b>	REV. <b>PA1</b>
SCALE: 3.0	REF. 10-504639-006	SHEET 2 OF 3	

