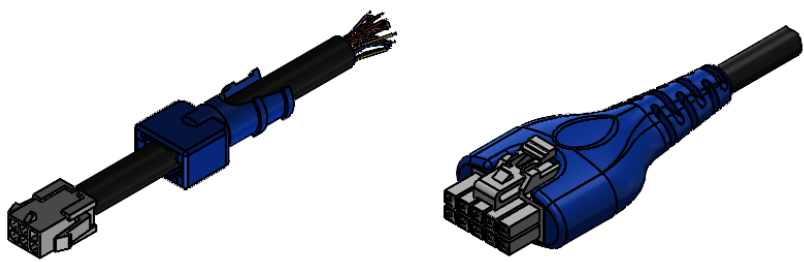
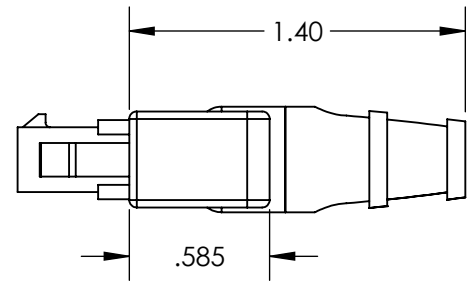
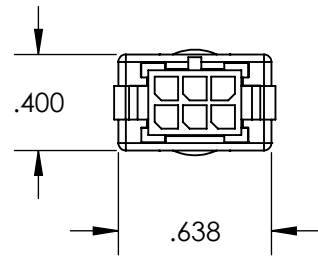
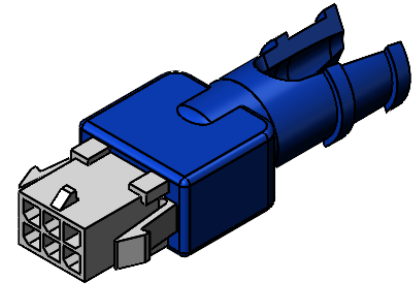
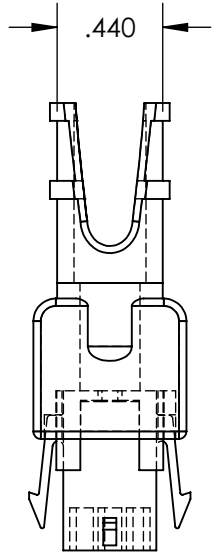


Notes:

1. Use With Molex Conn: 43020-0600 (or similar)
2. Molded in Black (Other colors and materials available directly through ISC)
3. ISC can build and overmold your assembly as a Turnkey solution



Mold Material: PVC, M1472, Black, RoHS



| | NAME | DATE |
|-----------|----------------|-----------|
| DRAWN | Duffield, Matt | 2/23/2021 |
| ENG APPR. | | |
| Q.A. | | |

Interconnect Solutions Company
 4351 Schaefer Ave, Chino, CA 91710
 Ph: 909-203-1121
 Fax: 909-596-3335
 www.interconnectsolutions.com

DIMENSIONS ARE SUBJECT TO CHANGE

PROPRIETARY AND CONFIDENTIAL

THE INFORMATION CONTAINED IN THIS DRAWING IS THE SOLE PROPERTY OF INTERCONNECT SOLUTIONS COMPANY. ANY REPRODUCTION IN PART OR AS A WHOLE WITHOUT THE WRITTEN PERMISSION OF ISC IS PROHIBITED.

| DIMENSIONS ARE IN INCHES TOLERANCES: | |
|--------------------------------------|----------------------|
| Two Decimal: +-.01 | |
| Three Decimal: +-.005 | |
| FINISH | |
| MATERIAL | 50000214 |
| USED ON | DO NOT SCALE DRAWING |

COMMENTS:

CONNECTOR P/N: Molex Micro-Fit
 CABLE SIZE - .100"-.300"

Description:
 Molex Micro-Fit Boot
 6 Pos Dual Row Plug
 Cables .100"-.300"

| | | |
|----------|-----------------|------|
| SIZE | Drawing No: | REV. |
| A | 14607715 | |