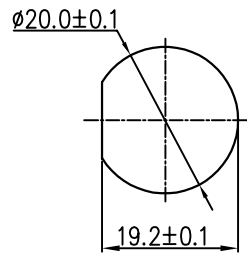
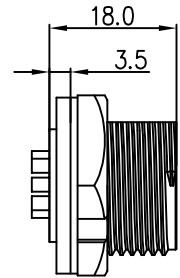


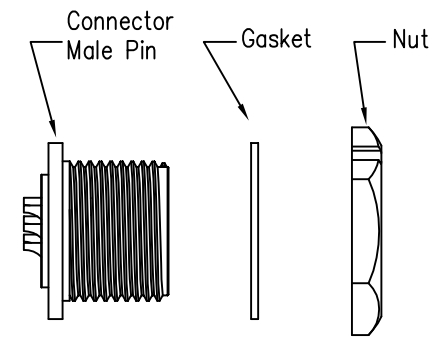
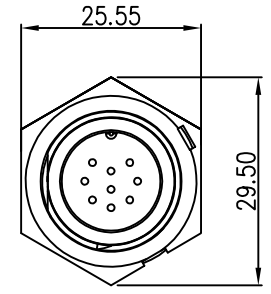
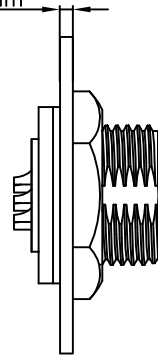
REV.	ECN NO.	DESCRIPTION	SIGN	DATE
C1	N/A	INITIAL DRAWING	Liu	2020/05/17



Recommended Panel Cut-Out



Panel T: Max 3.5mm

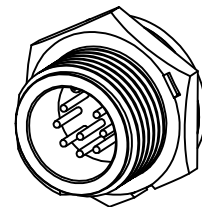


23XXX515-01
Pin Number

- Specification:
- 1.Operation Temperature: $-45^{\circ}\text{C} \sim 105^{\circ}\text{C}$.
 - 2.Insulation Resistance: $100\text{M}\Omega$ at DC500V.
 - 3.Contact Resistance: $<10\text{m}\Omega$.
 - 4.Withstand Voltage: 1300V AC
 - 5.Operating Current: 5A
 - 6.Operating Voltage: DC 60V
 - 7.Waterproof Rate: IP67 (Mated)
 - 8.Housing: Nylon, Black
 - 9.Male Pin: Copper Alloy, Gold Plated
 - 10.Gasket: Silicon Gray
 - 11.Panel Nut: Nylon, Black
 - 12.Torque Rate: $0.8 \sim 1.0\text{N} \cdot \text{m}$
 - 13.RoHS Compliant.
 - 14.UL Compliant.(Only 7Pin & 8Pin)
 - 15.Mating Cap P/N: 806-00021-00

7 Pin	8 Pin	9 Pin
P/N: 23007515-01	P/N: 23008515-01	P/N: 23009515-01

Pin Assignments Front View



CHOGORI

UNIT:mm		DESCRIPTION Middle Series Screw Type Front Mount With Male Pin	PART NO 23XXX515-01	DRAWN BY Liu	DATE 2020/05/17
TOLERANCE .X ±0.25 .XX ±0.15 .XXX ±0.05 ANGLES ±1°	SCALE 1:1	SHEET 1 OF 1	DWG NO	CHECKED BY Mo	DATE 2020/05/17
REV. C1	SIZE A4	* : Inspection Item	CUSTOMER	APPROVED BY Panson	DATE 2020/05/17

THIS INFORMATION IS CONFIDENTIAL AND IS DISCLOSED TO YOU ON CONDITION THAT NO FURTHER DISCLOSURE IS MADE BY YOU TO OTHER THAN CHOGORI PERSONNEL WITHOUT AUTHORIZATION FROM CHOGORI CORP.