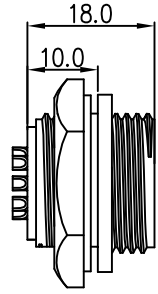


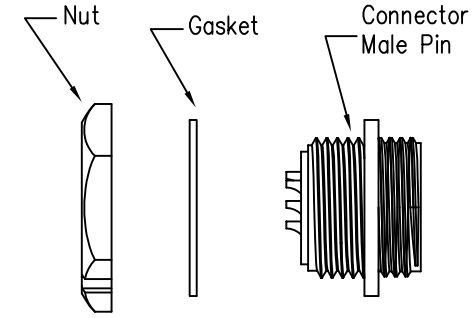
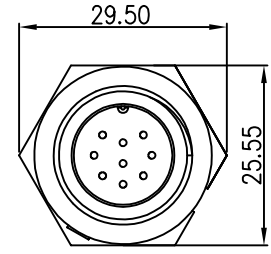
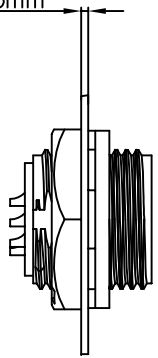
REV.	ECN NO.	DESCRIPTION	SIGN	DATE
C1	N/A	INITIAL DRAWING	Liu	2020/05/16



Recommended Panel Cut-Out



Panel T: Max 3.5mm

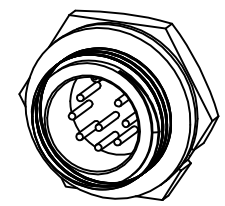


23XXX515-03
Pin Number

- Specification:
1. Operation Temperature: -45°C~105°C.
 2. Insulation Resistance: 100MΩ at DC500V.
 3. Contact Resistance: <10mΩ.
 4. Withstand Voltage: 1300V AC
 5. Operating Current: 5A
 6. Operating Voltage: DC 60V
 7. Waterproof Rate: IP67 (Mated)
 8. Housing: Nylon, Black
 9. Male Pin: Copper Alloy, Gold Plated
 10. Gasket: Silicon Gray
 11. Panel Nut: Nylon, Black
 12. Torque Rate: 0.8~1.0N·m
 13. RoHS Compliant.
 14. UL Compliant.(Only 7Pin & 8Pin)
 15. Mating Cap P/N: 806-00021-00

7 Pin	8 Pin	9 Pin
P/N: 23007515-03	P/N: 23008515-03	P/N: 23009515-03

Pin Assignments Front View



CHOGORI

UNIT:mm		DESCRIPTION Middle Series Screw Type Rear Mount With Male Pin	PART NO 23XXX515-03	DRAWN BY Liu	DATE 2020/05/16
TOLERANCE .X ±0.25 .XX ±0.15 .XXX ±0.05 ANGLES ±1°	SCALE 1:1	SHEET 1 OF 1	DWG NO	CHECKED BY Mo	DATE 2020/05/16
REV. C1	SIZE A4	* :Inspection Item	CUSTOMER	APPROVED BY Adley	DATE 2020/05/16

THIS INFORMATION IS CONFIDENTIAL AND IS DISCLOSED TO YOU ON CONDITION THAT NO FURTHER DISCLOSURE IS MADE BY YOU TO OTHER THAN CHOGORI PERSONNEL WITHOUT AUTHORIZATION FROM CHOGORI CORP.