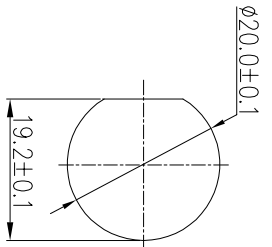
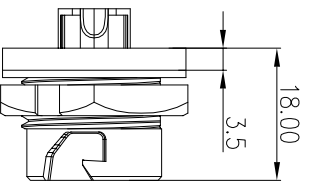


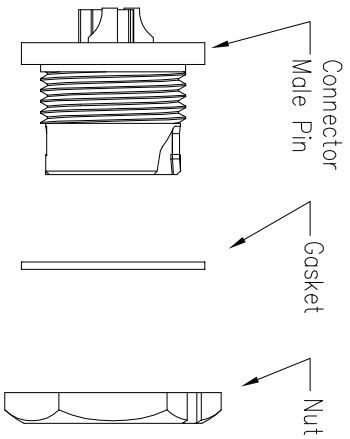
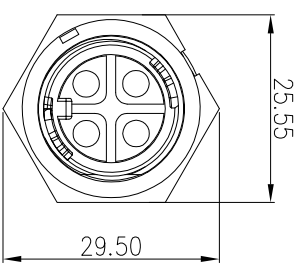
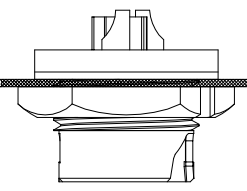
REV.	EN. NO.	DESCRIPTION	SIGN	DATE
C1	N/A	INITIAL DRAWING	Liu	2019/08/13



Recommended Panel Cut-Out

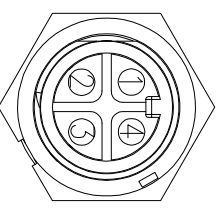


Panel T: Max 2.5



23XXXX535-01

Pin Number

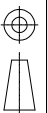


4 Pin

P/N: 23004535-01

Pin Assignments  
Front View

UNIT: mm



TOLERANCE  
X ±0.25  
.XX ±0.15  
.XXX ±0.05  
ANGLES ±1°

DESCRIPTION

Middle Series Push Lock  
Front Mount With Male Pin

SCALE	1:1	SHEET	1	OF	1
REV	C1	SIZE	A4	* : Inspection Item	

PART NO  
23XXXX535-01

DRAWN BY  
Liu

DATE  
2019/08/13

DWG NO  
M0

CHECKED BY  
M0

DATE  
2019/08/13

CUSTOMER  
Panson

APPROVED BY  
Panson

DATE  
2019/08/13

**CHOGORI**

- Specification:
1. Operation Temperature: -45°C~105°C.
  2. Insulation Resistance: 100MΩ at DC500V.
  3. Contact Resistance: <10mΩ.
  4. Withstand Voltage: 2000V AC
  5. Operating Current: 15A
  6. Operating Voltage: AC 300V
  7. Waterproof Rate: IP67 (Mated)
  8. Housing: Nylon, Black
  9. Male Pin: Copper Alloy, Gold Plated
  10. Gasket: Silicon Gray
  11. Panel Nut: Nylon, Orange
  12. Torque Rate: 0.8~1.0N•m
  13. RoHS Compliant.
  14. Mating Cap P/N: 806-00047-00