

Data sheet

Order No.: 1717025

Type: PC 6/ 2-GL2-7,62

PCB headers

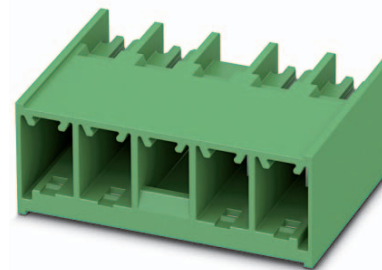
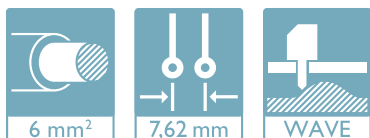


Figure shows a 4-pos. version with locking flange at position 3

1 Main features



- | | | | |
|-------------------------|-------------------|------------------------|-------|
| • No. of pos. | 2 | • Nominal current | 41 A |
| • Nominal cross section | 6 mm ² | • Nominal voltage | 630 V |
| • Color | black (9005) | • Connection direction | 0° |
| • Pitch | 7.62 mm | • Type of packaging | |
| • Mounting type | Wave soldering | | |

2 Your advantages

- ✓ Increased touch protection in the pin connector pattern for maximum safety even when not plugged in
- ✓ Easy PCB replacement thanks to plug-in modules
- ✓ Well-known mounting principle allows worldwide use



Make sure you always use the latest documentation.

It can be downloaded at: phoenixcontact.net/product/1717025

3 Table of contents

1	Main features.....	1
2	Your advantages	1
3	Table of contents	2
4	3D model in PDF can be activated (Acrobat Reader only).....	3
5	General Technical Data	4
	5.1 item properties	4
6	Material properties.....	4
	6.1 Material of metal parts.....	4
7	Dimensions.....	5
	7.1 Dimensions for the product	5
8	Series drawing.....	6
9	Application.....	7
10	Packaging information	7
	10.1 Temperature limit values	7
11	Mechanical tests.....	8
12	Electrical tests	9
	12.1 Electrical data	9
	12.2 Air and creepage distances	9
13	Current carrying capacity/derating curves	10
	13.1 Vibration test	10
14	Approvals	10
15	Commercial Data.....	11
16	corresponding plugs	11
17	Accessories.....	11
18	Combination tests.....	12

4 3D model in PDF can be activated (Acrobat Reader only)



1717025 PC 6/ 2-GL2-7,62**5 General Technical Data****5.1 item properties**

Order No.	1717025
Type	PC 6/ 2-GL2-7,62
Plug-in system	POWER COMBICON 6
Product type	PCB headers
Range of articles	PC 6/..-GL
Pitch	7.62 mm
Range of positions	2...6
Number of positions	2
Number of levels	1
Number of connections	2
Number of potentials	2
Type of locking	Snap-in locking Self-locking flange
Mounting type	Wave soldering
Pin layout	Linear pinning
Solder pins per potential	3

6 Material properties**6.1 Material of metal parts**

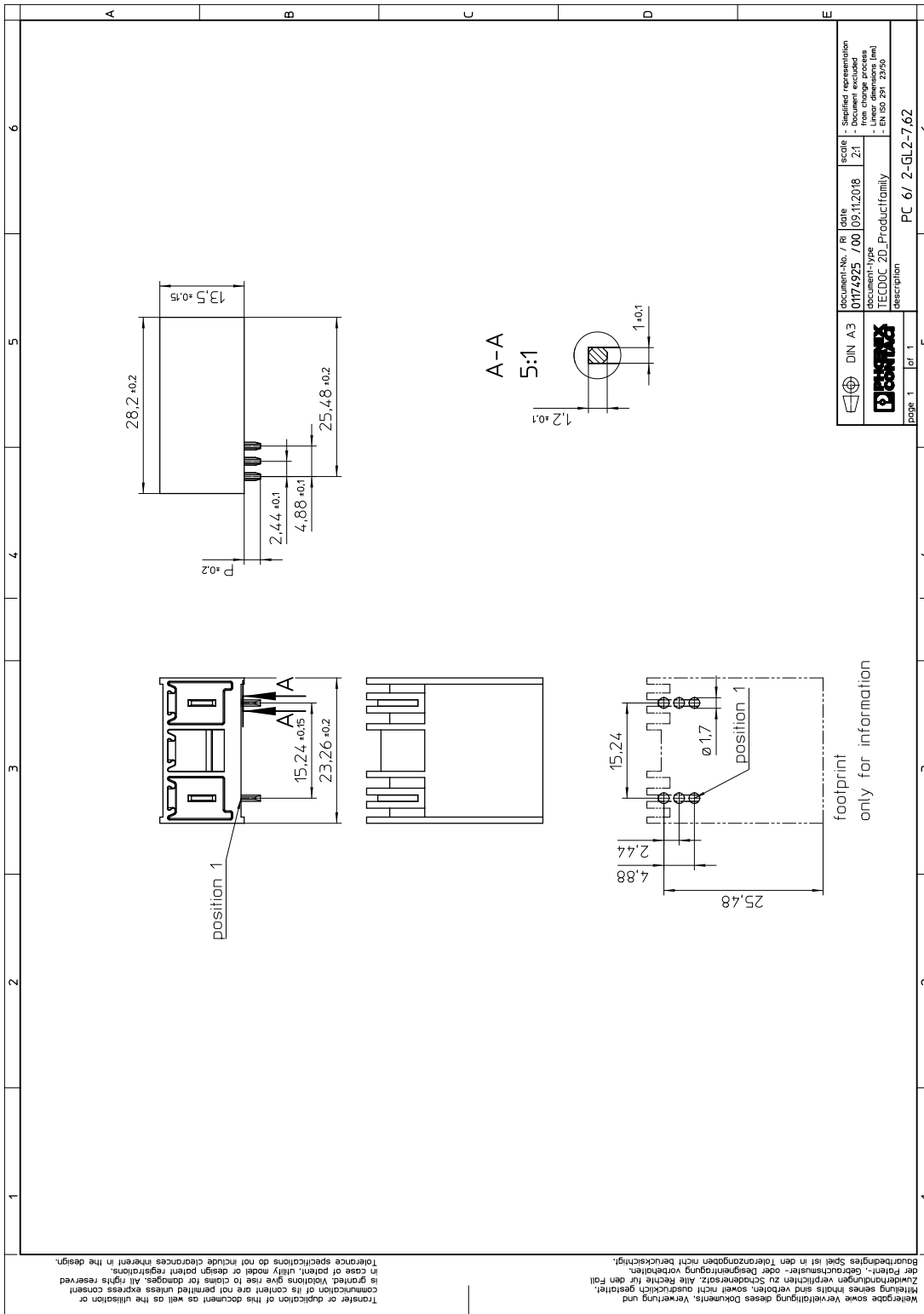
Note	WEEE/RoHS-compliant, whisker-free acc. to IEC 60068-2-82/JEDEC JESD 201
Contact material	Cu alloy
Surface contact area	Nickel (1.3 - 3 µm Ni) , Tin (2 - 4 µm Sn)
Soldering area surface	Nickel (1.3 - 3 µm Ni) , Tin (3 - 5 µm Sn)
Surface characteristics	Tin-plated
Insulating material data	Housing
Insulating material	PA GF
Insulating material group	I
CTI according to IEC 60112	600
Flammability rating according to UL 94	V0
Color	black (9005)

1717025 PC 6/ 2-GL2-7,62**7 Dimensions****7.1 Dimensions for the product**

Length	28.2 mm
Width	23.26 mm
Height (without solder pin)	13.5 mm
Total height	16.1 mm
Solder pin [P]	2.6 mm
Dimension a	

1717025 PC 6/ 2-GL2-7,62

8 Series drawing



Transfer or duplication of this document as well as the utilisation or communication of its content are not permitted unless express consent is granted. Violations give rise to claims for damages. All rights reserved in case of patent, utility model or design patent registrations. Tolerance specifications do not include clearances inherent in the design.

Weitergabe sowie Vervielfältigung dieses Dokuments, Verwertung und Mitteilung seines Inhalts sind verboten, soweit nicht ausdrücklich gestattet. Zuwiderhandlungen verpflichten zu Schadenersatz. Alle Rechte für den Fall der Patent-, Gebrauchsmuster- oder Designregistrations nicht berücksichtigt. Bearbeitungsmaßstab ist in den Toleranzangaben nicht berücksichtigt.

9 Application

10 Packaging information

Pieces per package	50
--------------------	----

10.1 Temperature limit values

Ambient temperature (storage/transport)	-40 °C ... 70 °C
Ambient temperature (assembly)	-5 °C ... 100 °C
Ambient temperature (operation)	-40 °C (dependent on the derating curve)

1717025 PC 6/ 2-GL2-7,62**11 Mechanical tests**

Mechanical test group A	
Specification	IEC 61984:2008-10
Visual examination	Test passed
Specification	IEC 60512-1-1:2002-02
Dimensional test	Test passed
Specification	IEC 60512-1-2:2002-02
Resistance of marking	Test passed
Specification	IEC 60068-2-70:1995-12
Insertion and withdrawal force	Test passed
Specification	IEC 60512-13-2:2006-02
No. of cycles	25
Insertion strength per pos. approx.	11 N
Withdraw strength per pos. approx.	10 N
Polarization and coding	Test passed
Specification	IEC 60512-13-5:2006-02
Test force	20 N
Contact retention in insert	Test passed
Specification	IEC 60512-15-1:2008-05
Test force per pos.	20 N

1717025 PC 6/ 2-GL2-7,62**12 Electrical tests****12.1 Electrical data**

Rated current / conductor cross section	41 A 6 mm ²
Rated insulation voltage (III/2)	630 V
Rated surge voltage (III/2)	6 kV
Contact resistance	0.5 mΩ
Degree of pollution	2

12.2 Air and creepage distances

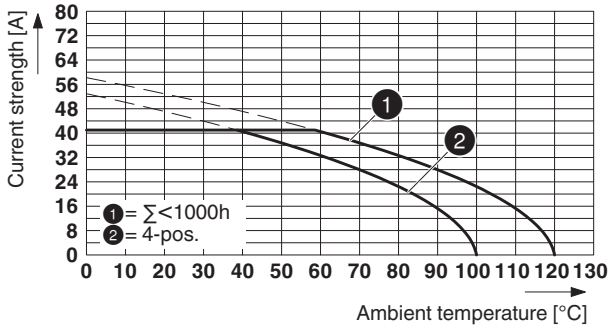
Component	Header		
Specification	IEC 60664-1:2007-04		
Mains type	unearthed mains		
Insulating material group	I		
Comparative tracking index (IEC 60112:2003-01)	CTI 600		
Rated insulation voltage	630 V	630 V	1000 V
Rated surge voltage	6 kV	6 kV	6 kV
Degree of pollution	3	2	2
Overtoltage category	III	III	II
Minimum clearance case A (inhomogeneous field)	5.5 mm	5.5 mm	5.5 mm
Minimum value of the creepage path requirement in acc. with table	8 mm	3.2 mm	5 mm

1717025 PC 6/ 2-GL2-7,62

13 Current carrying capacity/derating curves

Specification	IEC 61984:2008-10
Note	Representation based on IEC 60512-5-2:2002-02
Reduction factor	0.8
Number of positions	See diagram
Conductor cross section	6 mm ²

Type: LPC 6/...-STL...-7,62 with PC 6/...-GL...-7,62



Insulation resistance	
Specification	IEC 60512-3-1:2002-02
Result	Test passed
Insulation resistance, neighboring positions	> 4 TΩ

13.1 Vibration test

Specification	IEC 60068-2-6:2007-12
Result	Test passed
Frequency	10 - 150 - 10 Hz
Sweep speed	1 octave/min
Amplitude	0.35 mm (10 - 60.1 Hz)
Acceleration	5 g (60.1 - 150 Hz)
Test duration per axis	2.5 h
Test directions	X-, Y- and Z-axis
Note	The connected conductor loops were guided to the test sample at a distance of approx. 10 cm.

14 Approvals

cULus Recognized			
Use group	F	B	C
mm ² /AWG/kcmil			
Voltage	600 V	300 V	300 V
Current	35 A	35 A	35 A

1717025 PC 6/ 2-GL2-7,62**15 Commercial Data**

Order No.	1717025
Type	PC 6/ 2-GL2-7,62
Pieces per package	50
Net weight	80 g
GTIN	4055626536309
	Information that applies locally, see link on page 1
Country of origin	Information that applies locally, see link on page 1

16 corresponding plugs

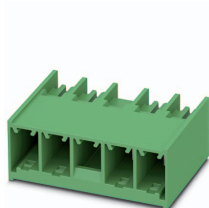
Order No.	Type
1716930	LPC 6/ 2-STL2-7,62

17 Accessories

Description	Order No.	Type
Coding profile, for plugging into the coding ribs of the plug at a later date, insulating material, color: Red	1701967	CP-PC RD

1717025 PC 6/ 2-GL2-7,62

18 Combination tests

**PC 6/..-GL**

IEC 61984

Mechanical tests (A)

Insertion/withdrawal force per position

Polarization when inserted
Requirement >20 NContact holder in insert
Requirements >20 N**Durability tests (B)**Contact resistance R_1

Insertion/withdrawal cycles

Contact resistance R_2 Rated impulse voltage at sea level
Voltage waveform $\geq (1.2/50 \mu s)$ Power-frequency withstand voltage
Voltage waveform $\geq (50/60 \text{ Hz})$ **Thermal tests (C)**

Tested number of positions

Tested conductor cross section

Test current

Upper limiting temperature
Requirements < 100°C**Climatic tests (D)**

Test sequence 1: low temperature storage

Test sequence 2: heat storage

Test sequence 3: noxious gas storage
(ISO 6988)Rated impulse voltage at sea level
Voltage waveform $\geq (1.2/50 \mu s)$ Power-frequency withstand voltage
Voltage waveform $\geq (50/60 \text{ Hz})$ **Environmental and endurance tests (E)**

Specification

Degree of protection

**LPC 6/..-STL2**

IEC 61984

approx. 11 N / 10 N

Test passed

Test passed

0.5 m Ω

25

0.5 m Ω

7.3 kV

3.31 kV

4

6 mm²

41 A

Test passed

-40 °C/2 h

100 °C/168 h

0.2 dm³ SO₂ on 300 dm³/
40 °C/1 cycle

7.3 kV

3.31 kV

IEC 61984:2008-10

Finger safety with IP20
test finger