



ISL Products International

**ø42mm Planetary Gear Motor
3-Phase Brushless**

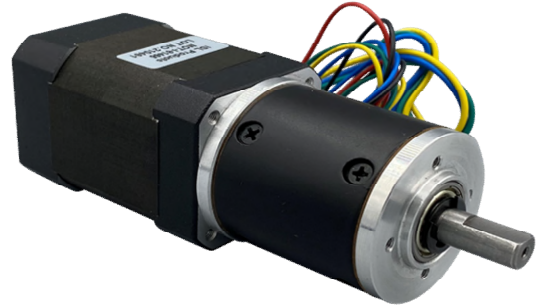
MOT-I-81465

Online ID#: **PGMBL-J42-24-15-387-C**

Our BLDC Planetary Gear Motors are an inline solution providing excellent torque output and superior reliability and control.

With endless performance combinations, we have a fully tailored gear motor solution for you.

Contact Us for alternative solutions!



Specifications			
Gearhead Type:	Planetary	No-Load Speed:	386 rpm (+/- 10%)
Motor Type:	Brushless - 8 Pole	No-Load Current:	< 0.60 A
Rated Voltage:	24V DC	Stall Torque:	65 kg.cm
Rated Speed:	267 rpm	Max. Power:	64 W
Rated Torque:	14 kg.cm	Reduction Ratio:	15:1
Rated Current:	2 A	Termination Style:	Lead Wires (26/20AWG)

Dimensions

+5V	RED	UL1007 26 AWG
HALL U	YEL	
HALL V	GRE	
HALL W	BLU	UL1007 20 AWG
GND	GND	
PHASE U	YEL	
PHASE V	GRE	
PHASE W	BLU	

Hall sensor cable
Note: hall sensor power supply voltage +5 to +20VDC

units: mm

