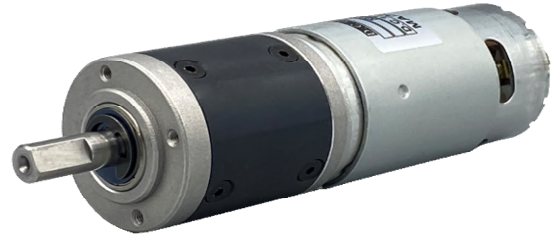




Our Planetary Gear Motors are an inline solution providing excellent torque output at various speeds. They are best for intermittent duty operation. With endless performance combinations, we have a fully tailored gear motor solution for you.

Contact Us for alternative solutions!



Specifications			
Gearhead Type:	Planetary	No-Load Speed:	281 rpm (+/- 10%)
Motor Type:	Carbon - Brushed	No-Load Current:	< 2 A
Rated Voltage:	12V DC	Stall Torque:	* 256 kg.cm
Rated Speed:	252 rpm	Stall Current:	110 A
Rated Torque:	27 kg.cm	Max. Power:	185 W
Rated Current:	13.26 A	Reduction Ratio:	71:1

* Gearbox limitations are set to 90 kg.cm. Operation past this torque level will lead to premature failure.

