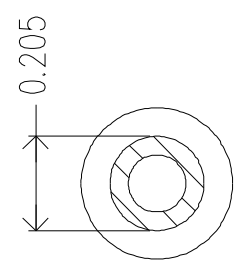
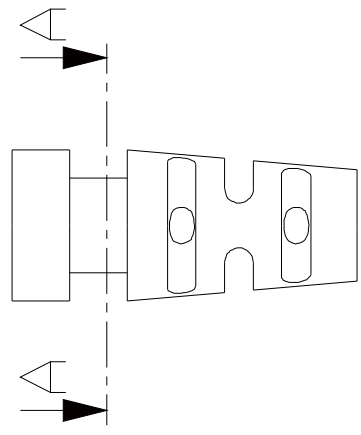
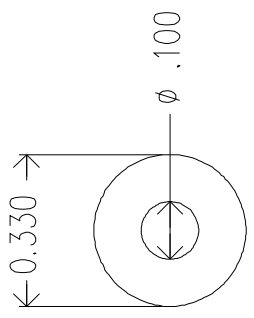
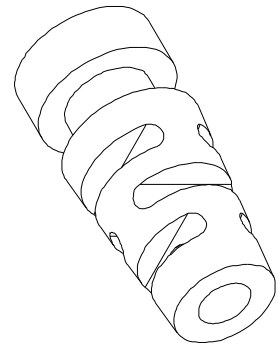
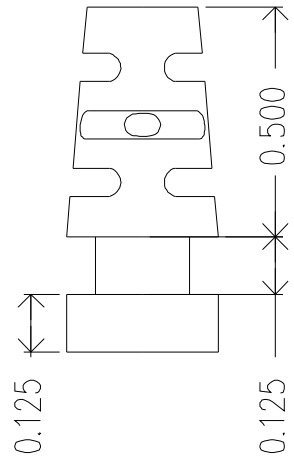


REVISIONS		DATE	APPROVED
ZONE	REV.		



A-A (2.5 : 1)



MOLD MATERIAL: ISC P/N: 5000214, PVC, M1472, Black, RoHS

Dimensions are subject to change.  
 PROPRIETARY AND CONFIDENTIAL  
 THE INFORMATION CONTAINED IN THIS  
 DRAWING IS THE SOLE PROPERTY OF  
 ISC ENGINEERING. ANY REPRODUCTION IN  
 PART OR AS A WHOLE WITHOUT THE WRITTEN  
 PERMISSION OF ISC ENGINEERING IS  
 PROHIBITED

DIMENSIONS ARE IN INCHES		NAME	DATE
TOLERANCES:		R FIERRO	01/14/04
FRACTIONAL ±		DRAWN	
ANGULAR: MACH ±	BEND ±	CHECKED	
TWO PLACE DECIMAL ±		ENG APPR.	
THREE PLACE DECIMAL ±		MFG APPR.	
		D.A.	
		COMMENTS:	
MATERIAL	---		
FINISH	---		
NEXT ASSY	USED ON		
APPLICATION	DO NOT SCALE DRAWING		

ISC Engineering  
 4351 Schaefer Ave, Chino, CA 91710  
 Ph: 909-596-3315 Fax: 909-596-3335  
 www.iscengineering.com  
 www.overmoldtooling.com

ROUND, MULTIFLEX SR  
 1461080-100-E-205-330-0

SIZE DWG. NO. 1467089  
 A REV.

SCALE: 2:1 WEIGHT: SHEET 1 OF 1

