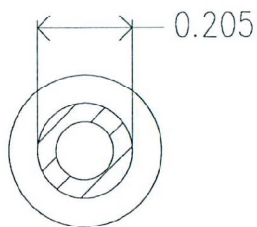
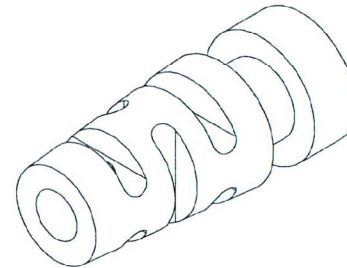
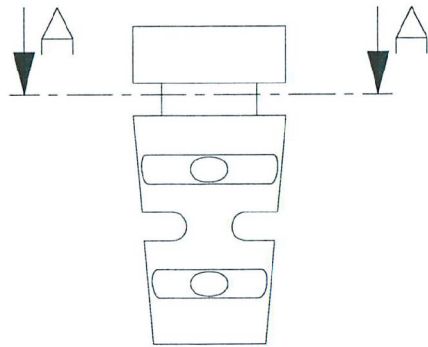
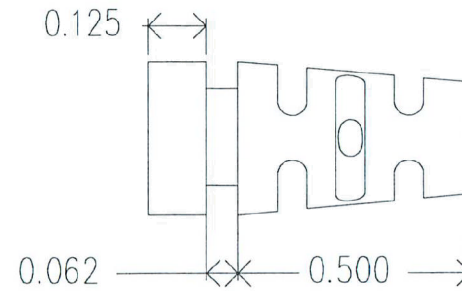
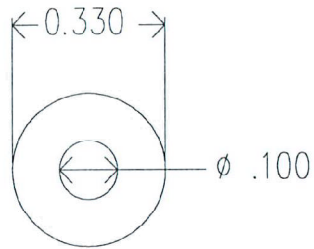


REVISIONS		DATE	APPROVED
ZONE	REV	DESCRIPTION	



A-A (2.5 : 1)

MOLD MATERIAL: ISC P/N: 5000214, PVC, M1472, Black, RoHS

**ISC ENGINEERING**  
**CONTROLLED COPY**  
Rich Fierro 09/06/2016

Dimensions are subject to change.  
PROPRIETARY AND CONFIDENTIAL  
THE INFORMATION CONTAINED IN THIS DRAWING IS THE SOLE PROPERTY OF ISC ENGINEERING. ANY REPRODUCTION IN PART OR AS A WHOLE WITHOUT THE WRITTEN PERMISSION OF ISC ENGINEERING IS PROHIBITED.

DIMENSIONS ARE IN INCHES		NAME	DATE	ISC Engineering 4351 Schaefer Ave, Chino, CA 91710 Ph: 909-596-3315 Fax: 909-596-3335 www.iscengineering.com www.overmaldtooling.com	
TOLERANCES:		DRAWN	R FIERRO		09/28/04
FRACTIONAL $\pm$		CHECKED			
ANGULAR: MACH $\pm$		ENG APPR.			
BEND $\pm$		MFG APPR.			
TWO PLACE DECIMAL $\pm$		Q.A.			
THREE PLACE DECIMAL $\pm$		COMMENTS:		ROUND, MULTIFLEX SR	
MATERIAL				1461080-100-B-205-330-0	
FINISH				SIZE A DWG. NO. 1467087	
NEXT ASSY	USED ON			REV.	
APPLICATION		DO NOT SCALE DRAWING		SCALE: 2:1 WEIGHT: SHEET 1 OF 1	