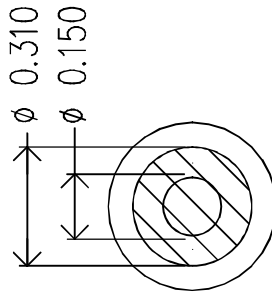
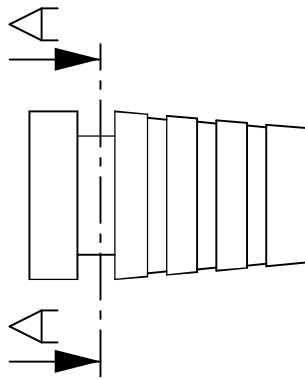
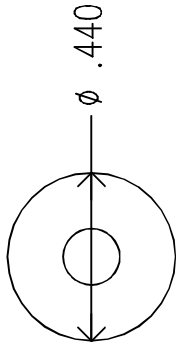
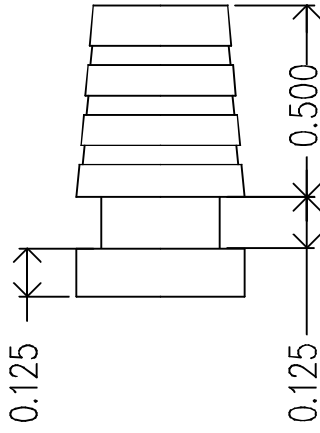
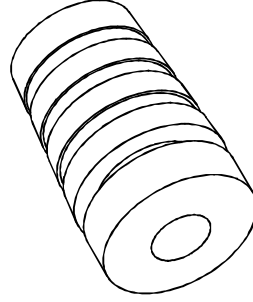


| REVISIONS | | DATE | APPROVED |
|-----------|------|------|----------|
| ZONE | REV. | | |
| | | | |



A-A



MOLD MATERIAL: ISC P/N: 5000214, PVC, M1472, BLK, RoHS

| DIMENSIONS ARE IN INCHES | | NAME | DATE |
|--------------------------|----------------------|-----------|----------|
| TOLERANCES: | | R FIERRO | 12/12/03 |
| FRACTIONAL ± | | CHECKED | |
| ANGULAR: MACH ± | BEND ± | ENG APPR. | |
| TWO PLACE DECIMAL ± | | MFG APPR. | |
| THREE PLACE DECIMAL ± | | D.A. | |
| | | COMMENTS: | |
| MATERIAL | -- | | |
| FINISH | -- | | |
| NEXT ASSY | USED ON | | |
| APPLICATION | DO NOT SCALE DRAWING | | |

| | |
|---|-------------------------|
| ISC Engineering 4351 Schaefer Ave, Chino, CA 91710 Ph: 909-596-3315 Fax: 909-596-3335 www.iscengineering.com www.overtmoldtooling.com | 1461040-150-E-310-440-0 |
| SIZE A | SCALE: 2:1 |
| REV. | WEIGHT: |
| 1460062 | SHEET 1 OF 1 |

Dimensions are subject to change.
 PROPRIETARY AND CONFIDENTIAL
 THE INFORMATION CONTAINED IN THIS
 DRAWING IS THE SOLE PROPERTY OF
 ISC ENGINEERING. ANY REPRODUCTION IN
 PART OR AS A WHOLE WITHOUT THE WRITTEN
 PERMISSION OF ISC ENGINEERING IS
 PROHIBITED.

