

1

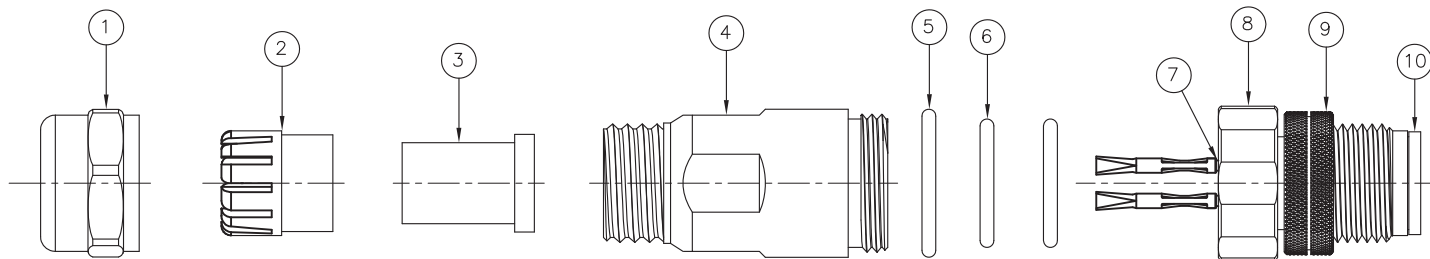
2

3

4

5

RoHS Compliant



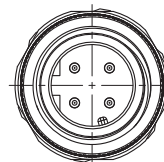
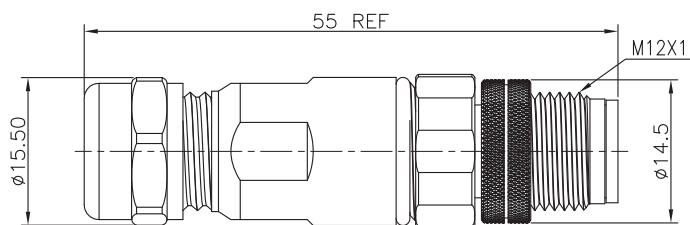
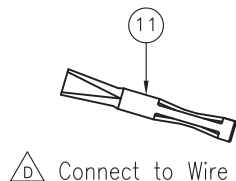
Specifications:

Current Rating:4A AC/DC
 Voltage Rating:250V(3~4Pin);60V(5Pin) AC/DC
 Contact Resistance:5m ohm. Max.
 Insulation Resistance:100M ohm. Min.
 Withstanding Voltage:500V AC/Minute
 Operating Temperature Range:-40°C ~ +100°C
 Mechanical:
 Durrability:200 Cycles
 Waterproof Rate:IP67
 Seal for Cable OD:ø4.0~6.5mm
 Material and Finish
 See Table

How to Order

M12-XXPD04-AC30

Gold Plated 30u"
 Assembly Crimp
 D Coding
 Plug
 No.of Contacts
 M12



Pin Assignments Front View



3Pin
18AWG~22AWG



4Pin
18AWG~22AWG



5Pin
18AWG~22AWG

Item	Description	Material	Remark	Q'TY
1	Sealing Nut	Brass	Nickel Plated	1
2	Clamp Ring	PC	Gray	1
3	Seal	EPDM	Black	1
4	Screw Nut	Brass	Nickel Plated 60u"	1
5	O-Ring	EPDM	Black	1
6	O-Ring	EPDM	Black	2
7	Male Pin	Brass	Gold Plated 30u"	3~5
8	Lock	Brass	Nickel Plated 60u"	1
9	Screw Nut	Brass	Nickel Plated 60u"	A/R
10	Insulator	Nylon66+GF	Black	1
11	Terminal	Phosphor copper	Selective Gold Plated 0.8u" Min Other Area Nickel Plated 50~80u"	3~5

REV	DATE	FILE	BY
F			
E			
D	02-Jul-2018	△ Change Terminal	Julian
C	28-Jun-2018	△ 53 REF → 55 REF	Julian
B	30-May-2018	△ Gold Plated 3u" → 30u"	Andrew
A	20-Mar-2018		Julian

DRAWN:
Julian

CHECKED:
Bill He

APPROVAL:
Norman

GENERAL TOLERANCE:
X.=±1
.X=±0.30
.XX=±0.20

UNIT: MM
SCALE: 1:1
SHEET: 1/1
PROJECTION:



ON-SHORE TECHNOLOGY, INC.

DESCRIPTION:

M12 D CODE PLUG ASSEMBLY CRIMP TYPE

PART NO:

M12-XXPD04-AC30

A

B

C

D