

P.C.B LAYOUT
t: 1.6±0.1mm

1 | 2

3 |

4

REMARK:
1.CHARACTERISTICS:
RATED VOLTAGE: 250V
RATED CURRENT: 5AMP
CONTACT RESISTANCE: 25mohms MAX:INITIAL:40mohms MAX.AFTER.
INSULATION RESISTANCE: 5000Mohms MIN.at 500V DC
DIELECTRIC STRENGTH: 1000VRMS
OPERATING TEMPERATURE RANGE: -55°C~105°C
INSERTION/EXTRACTION FORCE PER CONTACT:5N Max./0.3N Min.
MATING/UNMATING CYCLES:50MATINGS MIN.

2.MATERIAL:
INSULATORS: GLASS-FILLED THERMOPLASTIC UL94V-0, COLOR IN BLACK.
CONTACTS: COPPER ALLOY, SELECTIVE GOLD ON CONTACT AREA,
100u" Min MATTE TIN TOP OVER SOLDER AREA,
30u" Min NICKEL UNDER PLATE.
SHELL: STEEL,100u" Min NICKEL TOP OVER,
50u" Min COPPER UNDER PLATE.
CLINCH NUT: COPPER ALLOY, 100u" Min MATTE TIN PLATED.

3. PART NUMBER DESCRIPTION: **10090096-P XX X X LF**

SERIES NO. _____
TYPE _____
P: PIN (MALE)
NUMBER OF CONTACTS _____
LF: ROHS COMPLIANT
FLANGE MOUNTING OPTION
X: UNC #4-40 CLINCHNUTS
L: M3 CLINCHNUTS
CONTACT FINISH
4: GOLD FLASH
6: 30u" PLATING OPTION
AVAILABLE ON REQUEST

POS.	A	B	C	D	G	H
9	30.81	24.99	16.92	19.28	2.74	5.90±0.15
15	39.24	33.32	25.25	27.65	2.74	5.90±0.15
25	53.04	47.04	38.96	41.10	2.77	5.70±0.25
37	69.32	63.50	55.42	57.44	2.77	5.70±0.25

mat'l. code		tolerances unless otherwise specified		CUSTOMER COPY		title	
ltr	ec'n no	dr	date	linear	projection	product family	D-SUB
A	T09-1033	J.H	3/12/09	.XX ± 0.25	MM	D-SUB	D-SUB MALE STRAIGHT
B	T09-1044	J.H	4/2/09	.XXX ± 0.10	MM	D-SUB	D-SUB MALE STRAIGHT
C	ELX-H-011675	P.K	18/05/12	0° ±2°	MM	D-SUB	D-SUB MALE STRAIGHT

sheet index	revision sheet	c	c	1	2
1	2				

ACAD

3 |

4

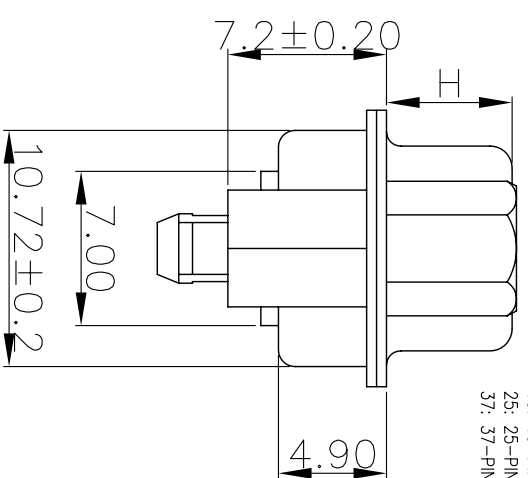
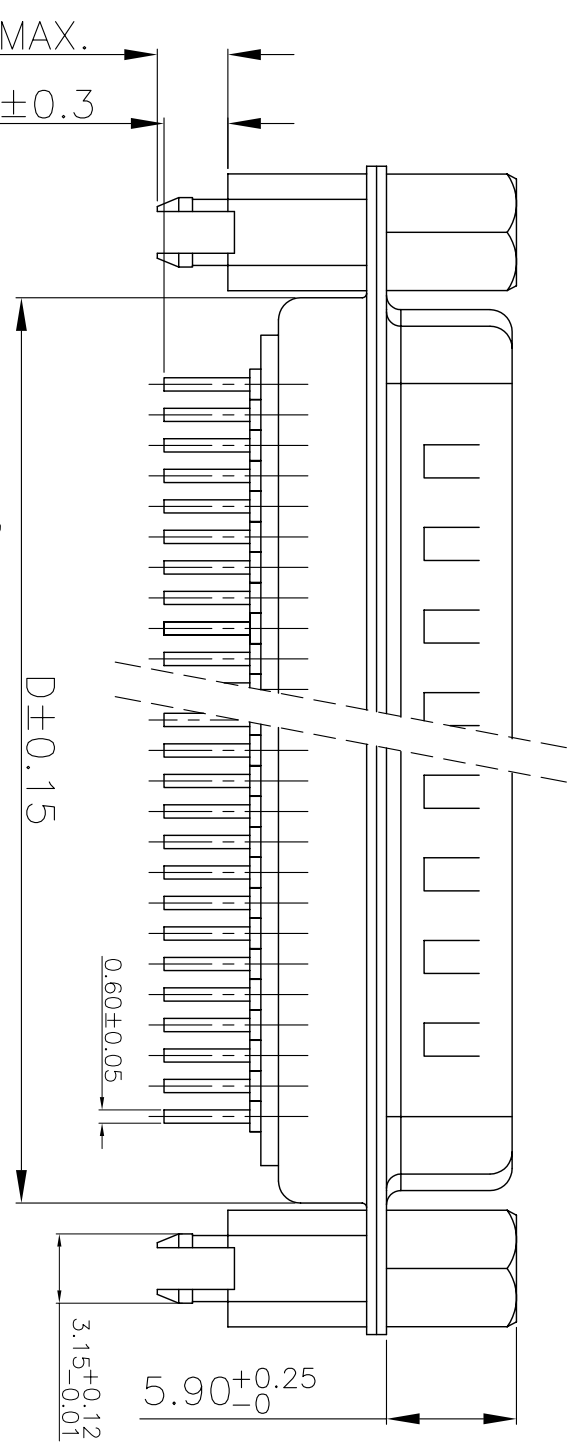
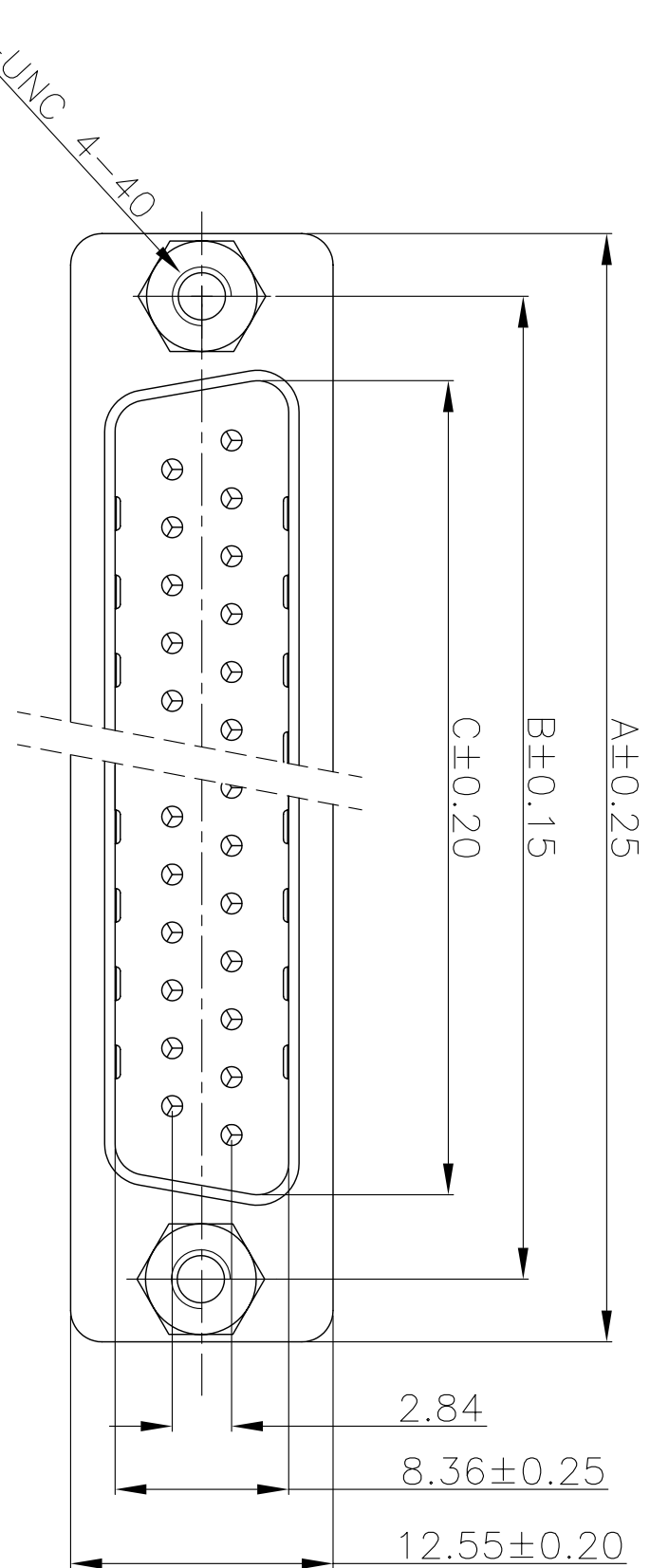
cage code
22526



1 | 2

3

4



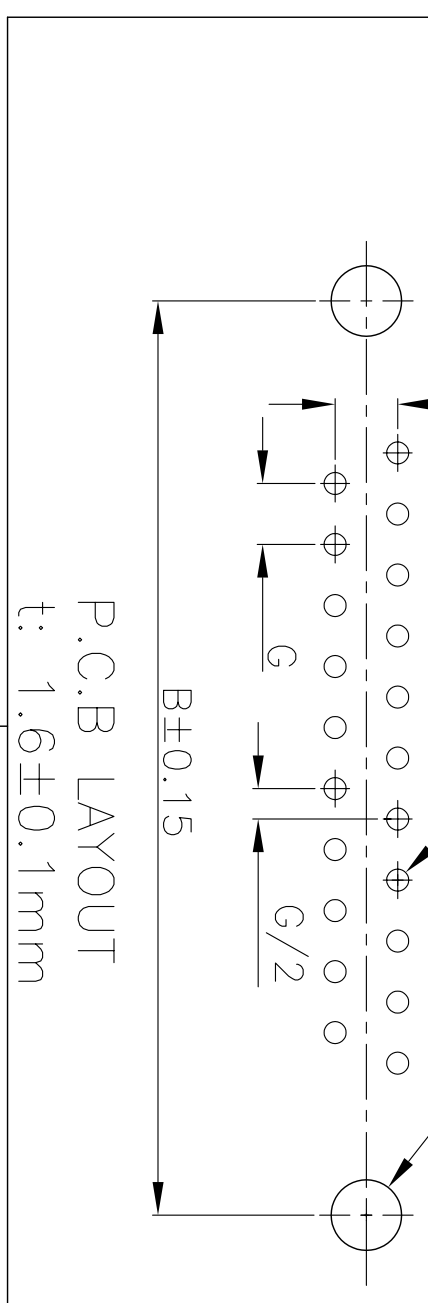
REMARK:
1.CHARACTERISTICS:
RATED VOLTAGE: 250V
RATED CURRENT: 5AMP
CONTACT RESISTANCE: 25mohms MAX;INITIAL ;40mohms MAX.AFTER.
INSULATION RESISTANCE: 5000Mohms MIN.at 500V DC
DIELECTRIC STRENGTH: 1000V/MS
OPERATING TEMPERATURE RANGE: -55°C~105°C
INSERTION/EXTRACTION FORCE PER CONTACT:5N Max./0.3N Min.
MATING/UNMATING CYCLES :50MATINGMS MIN.

2.MATERIAL:
INSULATORS: GLASS-FILLED THERMOPLASTIC UL94V-0. COLOR IN BLACK.
CONTACTS: COPPER ALLOY,SELECTIVE GOLD ON CONTACT AREA,
100u" Min MATTE TIN TOP OVER SOLDER AREA,
30u" Min NICKEL UNDER PLATE.
SHELL: STEEL,100u" Min NICKEL TOP OVER,
50u" Min COPPER UNDER PLATE.
CLINCH NUT:COPPER ALLOY,100u" Min MATTE TIN PLATED.
SCREW LOCK: COPPER ALLOY, 100u" Min BRIGHT NICKEL PLATED.

3. PART NUMBER DESCRIPTION: **10090096-P XX X X LF**

SERIES NO. _____
TYPE _____
P: PIN (MALE)
NUMBER OF CONTACTS _____
CONTACT FINISH _____
LF: ROHS COMPLIANT
FLANGE MOUNTING OPTION
V: UNC #4-40 SCREWLOCKS
09: 9-PIN
15: 15-PIN
25: 25-PIN
37: 37-PIN
4: FLASH GOLD
6: 30u" PLATING OPTION AVAILABLE ON REQUEST

POS.	PART NO.	H
9	10090096-P09*VLF	5.90±0.15
15	10090096-P15*VLF	5.90±0.15
25	10090096-P25*VLF	5.70±0.25
37	10090096-P37*VLF	5.70±0.25
POS.	A B C D G	
9	30.81 24.99 16.92 19.28	2.74
15	39.24 33.32 25.25 27.65	2.74
25	53.04 47.04 38.96 41.10	2.77
37	69.32 63.50 55.42 57.44	2.77



mat'l. code		CUSTOMER COPY		title	
ltr	ecn no	dr	date	projection	scale
c				MM	1:1
tolerances unless otherwise specified		linear		product family	
.X ± 0.38		.XX ± 0.25		D-SUB	
.XXX ± 0.10		0° ±2°		D-SUB MALE STRAIGHT	
angles		dr		product family	
0° ±2°		JASON HSU 6/30/08		D-SUB	
engr		JASON HSU 6/30/08		size	
chr		GARY HSEH 3/12/09		A4	
pppd		JOSEPH HSA 3/12/09		10090096	
sheet index		revision sheet		code	
1 2				TWN	
ACAD		3		sheet 2 of 2	
		4		cage code 22526	