

SPECIFICATIONS

ELECTRICAL

- RESISTANCE----- 10K OHMS
- TOLERANCE----- ±20%
- LINEARITY (INDEPENDENT)----- ±5.0%
- POWER RATING----- 0.1 WATT
- LEVER ELECTRICAL ANGLE----- 40° MAX.
- RESOLUTION----- ESSENTIALLY INFINITE
- OUTPUT SMOOTHNESS----- BELOW 0.2% AGAINST INPUT VOLTAGE
- CONTACT RESISTANCE VARIATION----- BELOW 6% C.R.V.
- INSULATION RESISTANCE----- 1000 MEGA OHMS @ 500VDC.
- DIELECTRIC STRENGTH----- 1 MINUTE AT 500 VAC
- MAX. WIPER OUTPUT----- 10MICRO AMP RECOMMENDED, 1 mA MAX.
- SWITCH RATING----- 0.1AMP AT 30 VDC

MECHANICAL

- RANGE OF OPERATING LEVER----- ±20° ~ ±25° FROM CENTER
- OPERATING FORCE----- APPROX. 3.52 ~ 8.8 OZ-F.
- OPERATING TEMPERATURE----- -20°C TO +60°C
- LIFE EXPECTANCY----- 2 MILLION OPERATIONS
- WEIGHT----- APPROX. 19.4 OZ.
- SHOCK-----

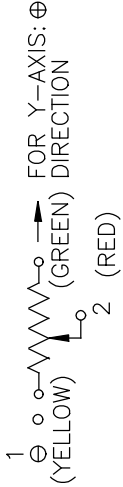
MATERIALS

- HOUSING----- HIGH TEMP. THERMO PLASTIC
- ELEMENT----- CONDUCTIVE PLASTIC

SWITCHING EVENTS

FORWARD SWITCH 'ON' (OFF WHEN BACK OR CENTER)

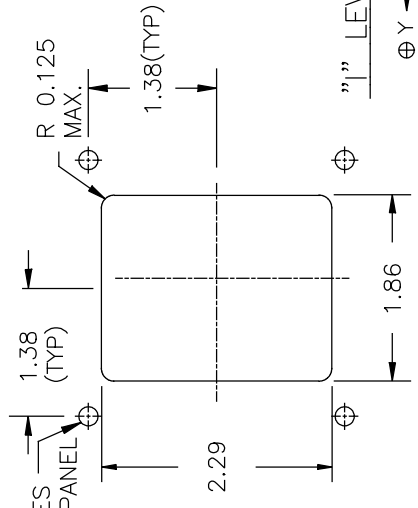
SCHEMATIC



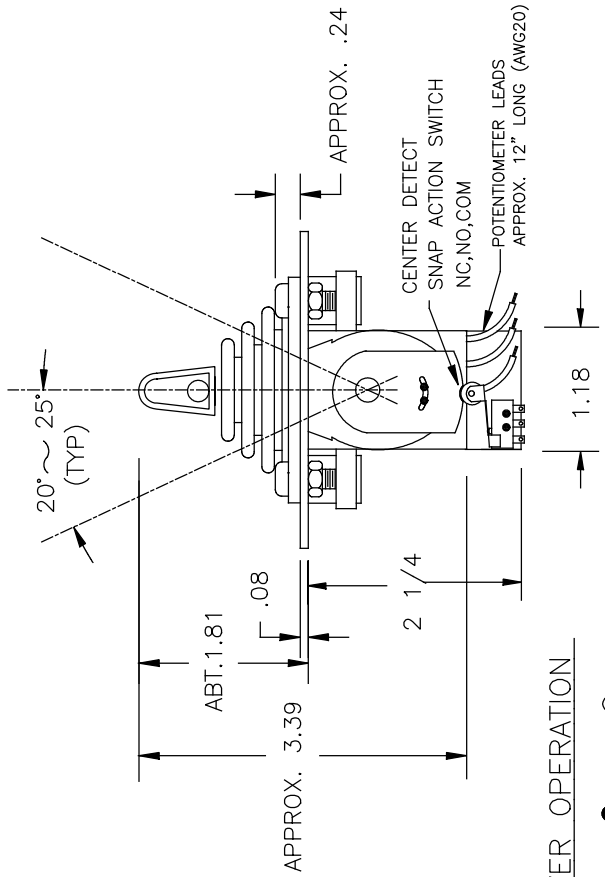
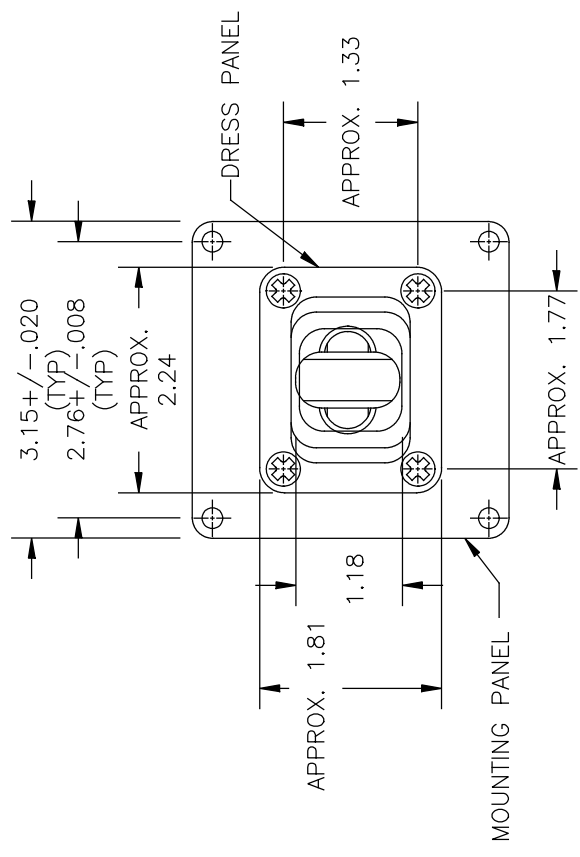
NOMENCLATURE

- J3L-I F 1 1-S M B
- TRUBBER BOOT.
- MOUNTING PANEL
- SPRING RETURN.
- No. OF SWITCHES. (2 POSSIBLE)
- No. OF POTENTIOMETERS. (1 POSSIBLE)
- HANDLE DESIGN
- LEVER DIRECTION
- JOYSTICK SERIES

PANEL ARRANGEMENT



"I" LEVER OPERATION
 ⊕ Y ← ● → ⊖



		TITLE JOYSTICK		PART NO. J3L-IF11-SMB	
SCALE	DATE: 3-25-03	BY	AT		
NONE		APPRV'D			
CODE IDENT:	19477				