




# 1Gigabit Magnetic Modules

24HSS/SH1041xx, VP60/9014xxxx



-  IEEE802.3ab/af/at/bt Compliant Options
-  Compatible with all Major PHYs
-  RoHS compliant and Halogen Free

Electrical Specification @ 25° (OCL@DC8mA)									
PART NUMBER	Media side Inductance (@100KHz/0.1Ve) uH min	Insertion Loss dB max	Return Loss dB min		PoE (Current Per Pair mA)	Operating Temperature (°C)	Isolation (Pri:Sec)	Note	
			1 - 100MHz	1 - 40MHz					40 < f ≤ 100 MHz
24HSS1041-2 HF	350	-1.0	-16	-(10-20 log <sub>10</sub> (f/80))		-	0 to 70	1500Vrms	-
24HSS1041A-2 HF	350	-1.0	-16	-(10-20 log <sub>10</sub> (f/80))		720	0 to 70	1500Vrms	-
24SH10410 HF	350	-1.0	-16	-(10-20 log <sub>10</sub> (f/80))		350	-10 to 70	1500Vrms	-
24SH10410B HF	350	-1.0	-16	-(10-20 log <sub>10</sub> (f/80))		720	-10 to 70	1500Vrms	-
VP6014 HF	350	-1.0	-16	-(10-20 log <sub>10</sub> (f/80))		720	0 to 70	1500Vrms	-
VP6014M HF	350	-1.0	-16	-(10-20 log <sub>10</sub> (f/80))		720	-40 to 85	1500Vrms	-
VP6014RM HF	350	-1.0	-16	-(10-20 log <sub>10</sub> (f/80))		720	-40 to 85	1500Vrms	-
VP6014RS4M HF	350	-1.4	-16	-(10-20 log <sub>10</sub> (f/80))		720	-40 to 85	1500Vrms	Surge DM7KV

Electrical Specification @ 25°C (OCL@DC15mA)									
PART NUMBER	Media side Inductance (@100KHz/0.1Ve) uH min	Insertion Loss dB max	Return Loss dB min		PoE (Current Per Pair mA)	Operating Temperature (°C)	Isolation (Pri:Sec)	Note	
			1 - 100MHz	1 - 40MHz					40 < f ≤ 100 MHz
VP9014RM HF	350	-1.4	-16	-(10-20 log <sub>10</sub> (f/80))		1000	-40 to 85	1500Vrms	-

Note: Refer to the specification for detail

## Process and Materials

1. Storage Temperature: Refer to the specification for details
2. Compliance to J-STD:
  - A. J-STD-002: Solderability at 245°C Reflow Profile
  - B. J-STD-020: Moisture Sensitive Level 1
  - C. J-STD-075: R7, 245°C Maximum Through Reflow Solder
3. All parts come in 13" (330mm) Diameter Tape and reel I - see page 3 for details
4. Header: DAP (Diallyl Phthalate) with flammability Rating UL 94V-0 or better
5. Lead Frame: Cooper Alloy
  - Underplated: Half Hard Ductile Nickel 40-118" (1.0-3.0um)
  - Over plated: 100% Tin electro-deposited per 240~400u"Min(6~10um)
  - Finish: Matte finish 100% Tin solder

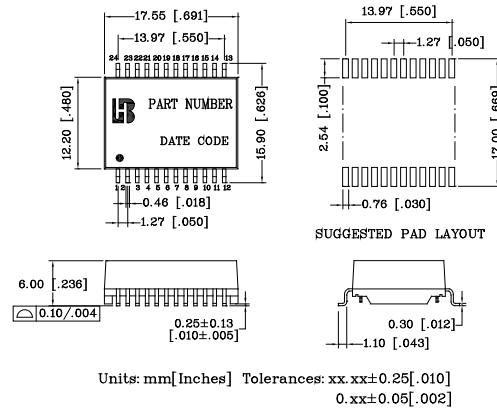
# 1Gigabit Magnetic Modules

24HSS/SH1041xx, VP60/9014xxxx



## Mechanical

### 24xxx AND VP xxx

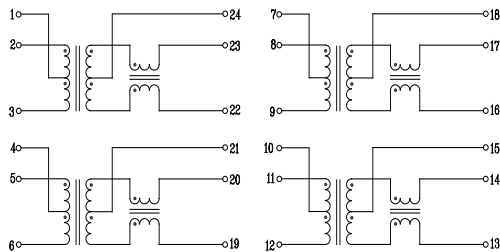


Dimensions: mm / [Inches]  
Unless otherwise specified, all tolerances are:

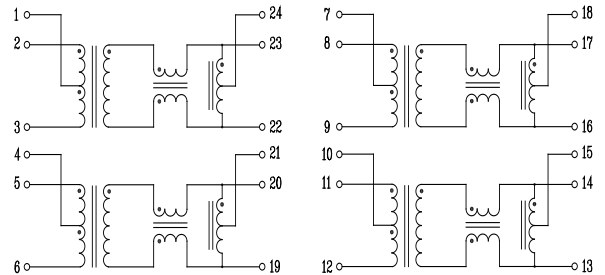
xx.xx ± 0.25 [.010]  
0.xx ± 0.05 [.004]

## Schematic

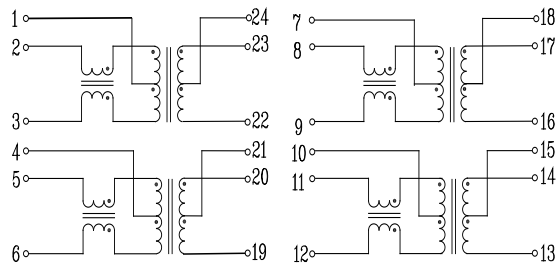
### 24HSS1041-2 HF, 24SH10410 HF, 24SH10410B HF, VP6014 HF, VP6014M HF



### 24HSS1041A-2 HF



### VP6014RM HF, VP6014RS4M HF, VP9014RM HF

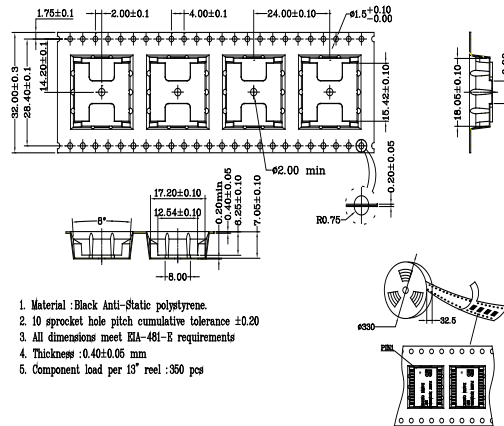


# 1Gigabit Magnetic Modules

24HSS/SH1041xx, VP60/9014xxxx

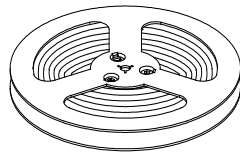
## Tape & Reel

### 24xxx AND VPxxx

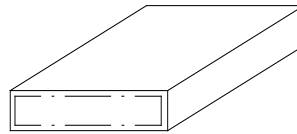


## Carton Package

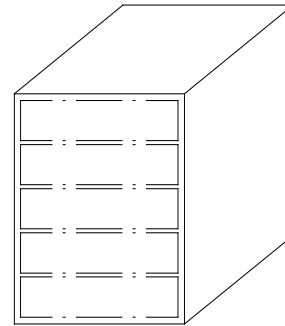
### 24xxx AND VPxxx



REEL



INNER BOX: 347x347x82



OUTER CARTON: 375x375x470

1. 1 REEL=350PCS
2. 1 INNER BOX=1 REEL=350PCS
3. 1 OUTER CARTON=5 INNER BOXES=1750PCS

## For More Information:

[Americas-prodinfonetworkamericas@pulseelectronics.com](mailto:Americas-prodinfonetworkamericas@pulseelectronics.com) | [Europe-comms-Apps-Europe@pulseelectronics.com](mailto:Europe-comms-Apps-Europe@pulseelectronics.com) | [Asia-prodinfonetworkapac@pulseelectronics.com](mailto:Asia-prodinfonetworkapac@pulseelectronics.com)

Performance warranty of products offered on this datasheet is limited to the parameters specified. Data is subject to change without notice. Other brand and product names mentioned herein maybe trademarks or registered trademarks of their respective owners.

©Copyright,2021.PulseElectronics,Inc.Allrightsreserved.