

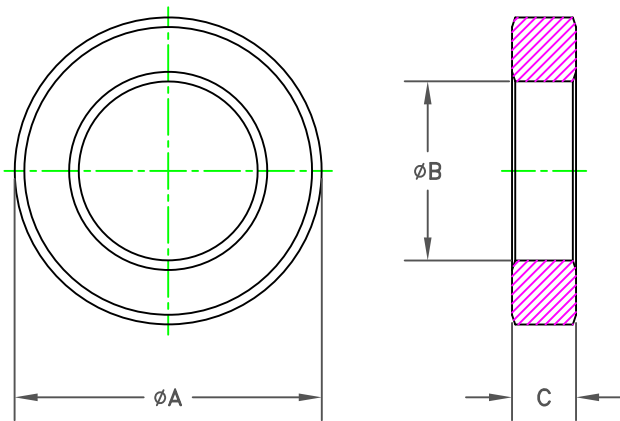
UNCONTROLLED COPY WHEN PRINTED

SIZE	PART NO.	REV.
B	5980003801	1

04/18/2024

NOTES:

1 - BURNISH TO BREAK SHARP EDGES.



ELECTRICAL SPECIFICATIONS						
$\Sigma l/A(\text{mm}^{-1})$	l_e (mm)	A_e (mm ²)	V_e (mm ³)	L_o (nH)	A_L (nH) @ 10 kHz <10gauss	$\tan \delta/\mu_1$ @ 800 kHz <1gauss
0.923	144	156	22350	1.361	816±25%	≤100X10E-6

POWER LOSS @ 25°C

f = 750 kHz, 300 gauss P.L., ≤4.80 Watts

A	B	C
58.95/62.05	34.50/36.30	12.20/13.20
2.382	1.394	.500

BOLD DIMENSIONS ARE IN MILLIMETERS**, LIGHT DIMENSIONS ARE IN INCHES.

1	D-0901	UPDATED ELECTRICAL SPECIFICATIONS	D.F.	04-11-2023
REV.	ECN	DESCRIPTION	DRFT	DATE
REVISIONS				
APPLICABLE SPECS	DRAWING CLASS	1411	FAIR-RITE PRODUCTS CORP.	
	MATERIAL	FR# 80	TITLE TOROID	
Tolerances Unless Otherwise Indicated	FINISH		DRAWN BY D. SCHULZ	DATE 05-20-2022
3PL 2PL FRACT ANGLE			SIZE B	PART NO. 5980003801
			CHKD BY	REV. 1
			APPRVD BY	SCALE NONE SHEET 1 of 1