

1

2

3

4

5

6

7

A

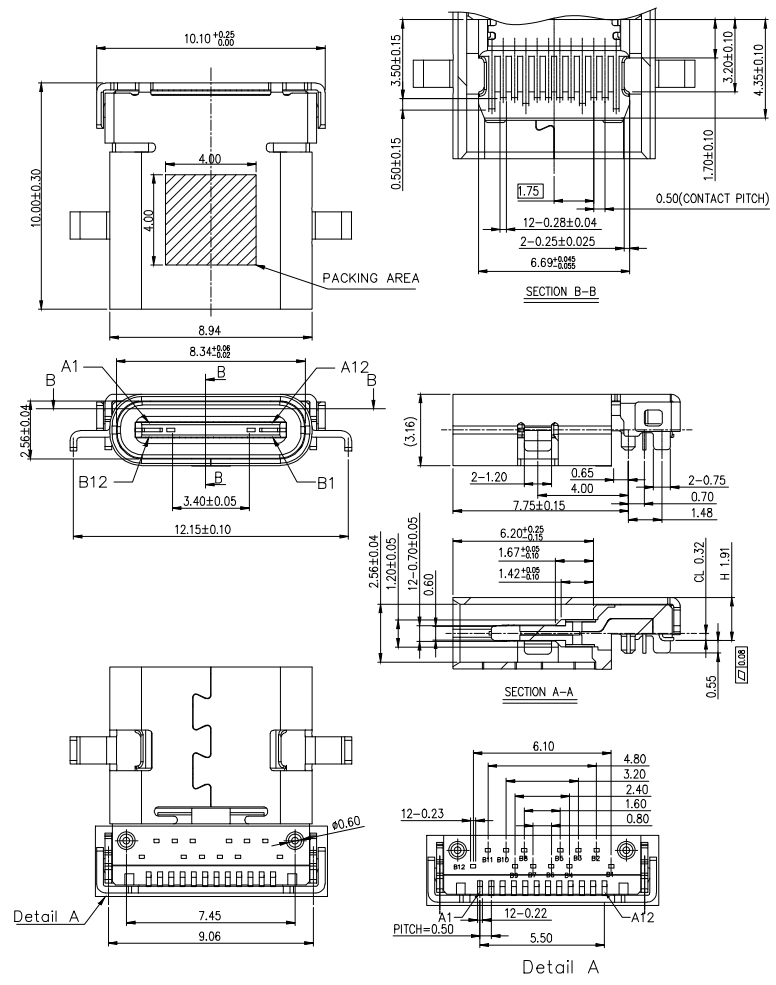
B

C

D

E

F



NOTES: 1.MATERIAL:  
 MOLDING: LCP UL94 V-0  
 CONTACT: COPPER ALLOY.  
 G/F PLATED ON CONTACT AREA,  
 G/F PLATED ON SOLDER AREA,  
 50u" NICKEL PLATING OVER ALL.  
 SHELL: SUS304-H,T=0.30±0.03mm  
 50u" NICKEL PLATING OVER ALL.  
 SHILD: SUS304-H,T=0.12±0.03mm

2.MECHANICAL:  
 INSERTION: 5~20N.  
 EXTRACTION: 8~20N.  
 DURABILITY: 10000 CYCLES

3.ELECTRICAL:  
 CURRENT: 5A MIN FOR VBUS;  
 0.25A MIN FOR OTHER.  
 VOLTAGE: 5VAC MAX  
 WITHSTANDING VOLTAGE: 100V AC. R.M.S  
 CONTACT RESISTANCE: 40mΩ MAX.  
 INSULATION RESISTANCE: 100MΩ MIN.

4.ENVIRONMENTAL  
 TEMPERATURE RANGE: -30°C TO +80°C

**RoHS compliant**  
 Unit: mm

G	Scale	Free					Date	Name	Description: USB Connector		
	TOLERANCE						Drawn	09.03.2022	Luca	TYPE C / USB3.2 Gen1 / FEMALE / T&R	
	X.X	±0.30					Approved	09.03.2022	Luca	ASSMANN WSW-No. A-USBC-32F1-EA-GRR02	
	X.XX	±0.20								Drawing-No.	
H	X.XXX	±0.10								ASS 9243 CO rev00	
	DIM	TOL								Customer-No.	
	X°	±2°								Sheet 1/3	
			①	Drawn		09.03.2022	Luca				
		Id.	Modification		Date	Name					

1

2

3

4

5

6

7

SV5065

1

2

3

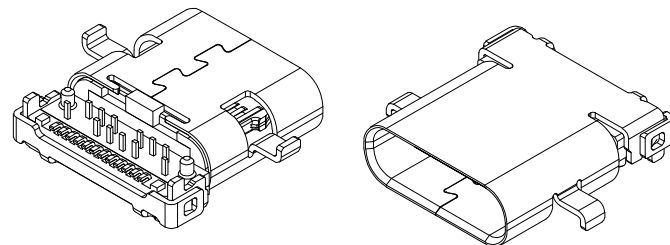
4

5

6

7

A

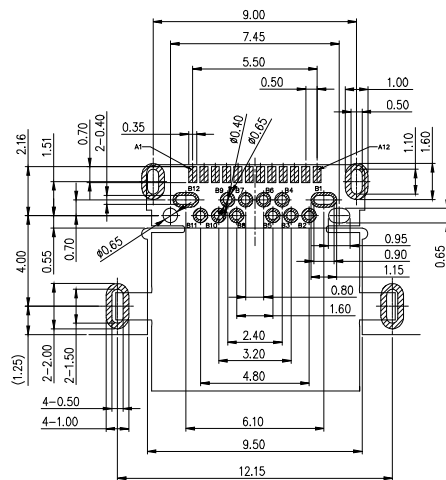


B

USB TYPE-C FULL-FEATURED RECEPTACLE INTERFACE PIN ASSIGNMENTS

PIN	Signal Name	Description	PIN	Signal Name	Description
A1	GND	Ground return	B12	GND	Ground return
A2	SSTXp1	Positive half of first SuperSpeed TX differential pair	B11	SSRXp1	Positive half of first SuperSpeed RX differential pair
A3	SSTXn1	Negative half of first SuperSpeed TX differential pair	B10	SSRXn1	Negative half of first SuperSpeed RX differential pair
A4	VBUS	Bus Power	B9	VBUS	Bus Power
A5	CC1	Configuration Channel	B8	SBU2	Sideband Use (SBU)
A6	Dp1	Positive half of the USB 2.0 differential pair-Position 1	B7	Dn2	Negative half of the USB 2.0 differential pair-Position 2
A7	Dn1	Negative half of the USB 2.0 differential pair-Position 1	B6	Dp2	Positive half of the USB 2.0 differential pair-Position 2
A8	SBU1	Sideband Use(SBU)	B5	CC2	Configuraation Channel
A9	VBUS	Bus Power	B4	VBUS	Bus Power
A10	SSRXn2	Negative half of second SuperSpeed RX differential pair	B3	SSTXn2	Negative half of second SuperSpeed TX differential pair
A11	SSRXp2	Positive half of second SuperSpeed RX differential pair	B2	SSTXp2	Positive half of second SuperSpeed TX differential pair
A12	GND	Ground return	B1	GND	Ground return

C



RECOMMEND P.C.B LAYOUT (COMPONENT SIDE)  
 TOLERANCE FOR PCB LAYOUT IS ±0.05  
 KEEP OUT AREA

D

E

F

**RoHS compliant**  
 Unit: mm

Scale	Free
TOLERANCE	
X.X	±0.30
X.XX	±0.20
X.XXX	±0.10
DIM	TOL
X°	±2°

							Date	Name	Description: USB Connector TYPE C / USB3.2 Gen1 / FEMALE / T&R	
							09.03.2022	Luca		
							09.03.2022	Luca	ASSMANN WSW-No. A-USBC-32F1-EA-GRR02	
									Drawing-No.	
									ASS 9243 CO	rev00
									Customer-No.	Sheet 2/3



1

2

3

4

5

6

7

1

2

3

4

5

6

7

A

B

C

D

E

F

Technical drawing of a USB connector tape. The drawing includes a side view of the tape with dimensions: 11.50±0.10, 1.75±0.10, 16.00±0.10, 4.00±0.10, 2.00±0.10, 24.00±0.30, and a hole diameter of  $\phi 1.50 \pm 0.10$ . A note specifies a hole tolerance of  $-0.00$ . The drawing also shows a top view of the tape with a carrier tape and a peeling angle of 165°~180° with a peeling force of 20~130g. A detail view (DETAIL B) shows a circular component with dimensions: 1.90±0.40, 120.00°,  $\phi 13.00$ , and 10.50. The drawing is labeled with 'User Direction of Unreeling' and 'CARRIER TAPE'.

NOTES

1. NUMBER OF CONNECTORS: 1000 PCS/REEL
2. LEAD TAPE LENGTH

Diagram of a lead tape showing sections: LEADER 400mm MIN, COMPONENT SUPPLIER, TRAILER 160mm MIN, and EMPTY COVER TAPE (300mm Min). The diagram also indicates 18 PCS MIN for the empty cover tape and 1000 PCS for the component supplier section.

3. QUANTITY: 10000 PCS/CARTON

Diagram showing the assembly process from a reel to a carton. It includes a 10-REEL, a 4-TRIANGLE PARTITION, and a CARTON. The process involves TAPE ON and LABEL steps.

**RoHS compliant**  
Unit: mm

Scale Free

TOLERANCE

X.X ±0.30

X.XX ±0.20

X.XXX ±0.10

DIM TOL

X° ±2°

①

Drawn

09.03.2022

Luca

Id.

Modification

Date

Name

Date

Name

Description: USB Connector

TYPE C / USB3.2 Gen1 / FEMALE / T&amp;R

ASSMANN WSW-No.

A-USBC-32F1-EA-GRR02

Drawing-No.

ASS 9243 CO

rev00

Customer-No.

Sheet  
3/3

**ASSMANN**  
WSW components

1

2

3

4

5

6

7

SV5065