

THE POWER OF
ESD²

ELECTROSTATIC DISCHARGE PACKAGING
+ ENGINEERED SOLUTIONS AND DESIGNS

STOCK SOLUTIONS CATALOG

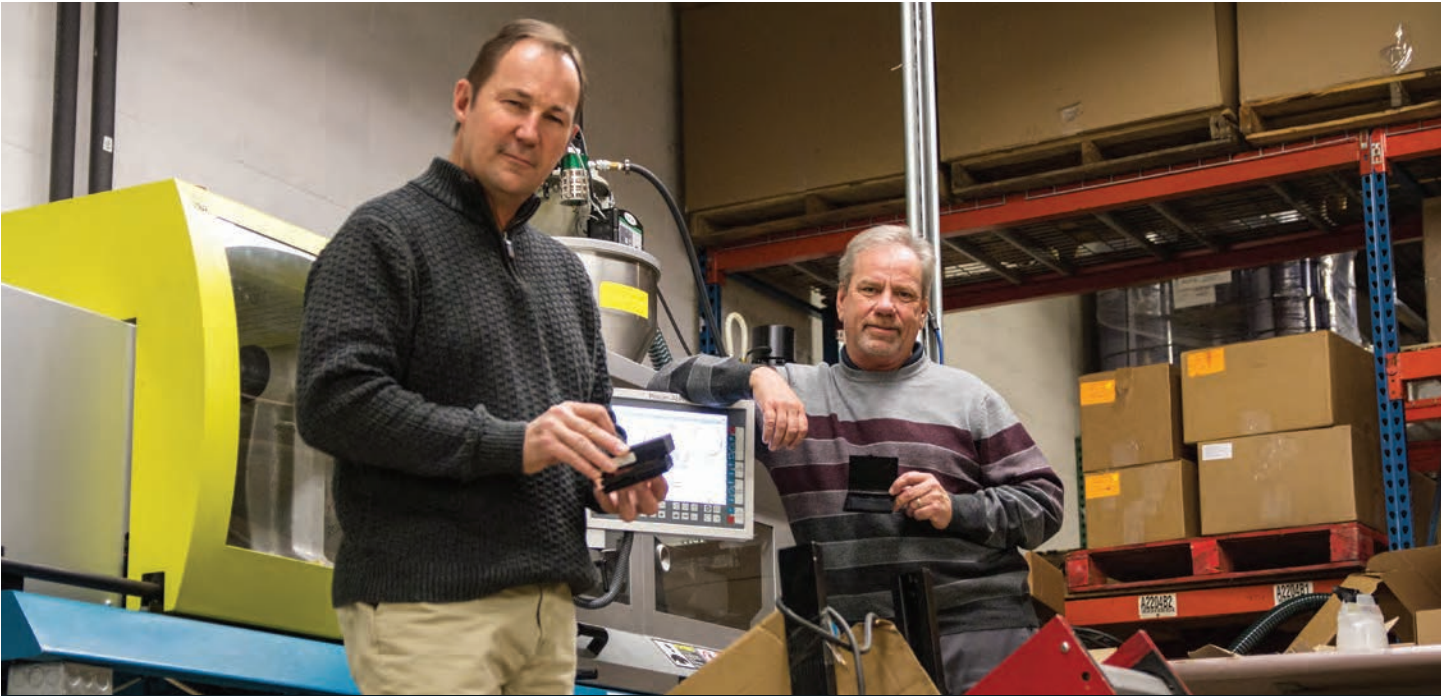
ISSUED
2015



MORE SOLUTIONS
NO STATIC



conductive containers, inc.



WE HAVE A STOCK ESD SOLUTION FOR NEARLY EVERY **SHIPPING AND HANDLING NEED**

Welcome to our ESD Stock Solutions Catalog

Throughout the pages of this book you will find thousands of ESD solutions for a wide variety of industries...from high tech electronics and health care to aerospace and computing. Solutions that protect sensitive components through every step of the manufacturing process from prototyping to handling to shipping.

In our 36 years of experience, we've become known as the ESD experts...the guys that can provide the complete solution with just one call. That's because we've literally seen it all, done it all and have a book full of solutions to prove it. That's not bragging. It's just the simple truth.

**Meet your Static Control
Program requirements
with the standard
solutions in this book.**

It all started over 36 years ago when we invented CORSTAT and since has evolved into a wide variety of ESD protective designs, materials, and processes such as thermoformed plastics, permanent ESD safe foams, injection molded boxes, CFP products, our new Tacki Pak Technology, and much more.

But even with thousands of stock solutions in our warehouse and ready to ship...it's just the tip of the iceberg. More than 80% of our business is in the custom solutions we design, engineer and produce to protect sensitive components. Every day, we are seeing new challenges and creating new solutions. That's the passion that truly fuels CCI.

If you don't find the solution you need. Tell us. And we'll get to work.

TABLE OF CONTENTS

ELECTROSTATIC DISCHARGE PACKAGING - STOCK PRODUCTS

Component Shipping	3
Circuit Board Shipping	7
Component Handling	10
Storage	11
Component and Board Handling	14
ESD Safe Work Stations	15
Circuit Board Handling	18
Industrial Products	27

ENGINEERED SOLUTIONS AND DESIGNS - CUSTOM PRODUCTS

Custom Products	29
Circuit Board Handling	30

ORDER POLICIES

Shipping Locations: CCI has stock products warehoused in New Hope, Minnesota. All freight charges are billed F.O.B. origin.

Product Service Codes:

- S – Standard products normally stocked at CCI-lead time is 1-5 days for listed quantities.
- M – Made to order with no tooling – lead time is 5-10 working days.
- C – Custom products with a longer lead time that are made to order with no tooling. Consult customer service for lead time.

Contact your CCI CSR to find out which product service code applies.

Pricing: CCI maintains a stock products price list that is subject to change without notice.

Minimum Order: \$75.00

Stock Outs: CCI stock products are normally in stock, however, CCI is not responsible for delays due to temporary stock-outs. CCI will make every attempt to produce and deliver as quickly as possible in these instances. CCI is not responsible for charges incurred for expedited freight.

Stock Returns: CCI will accept returns of stock products within 30 days of the order and to a maximum dollar volume of \$5,000. Returns must be approved by CCI customer service and assigned an RMA# to be accepted at CCI. A 15% restocking charge applies to all items returned, and the customer pays the return freight charges. If returns are made as the result of an error by CCI, CCI will pay the return freight and replace the parts as required.



WHEN **HANDLE** ISN'T GOOD

Even though we have thousands of stock products ready to ship, the vast majority of our work is in the custom solutions we develop to meet the ever-changing needs of manufacturers around the world.

With today's rapidly changing technology and the explosion of high

value components, the demand for custom ESD handling solutions continues to grow. No one knows how to handle ESD better than CCI. Over 36 years ago we started the industry with CORSTAT and have continued to lead it with static-safe solutions that include:

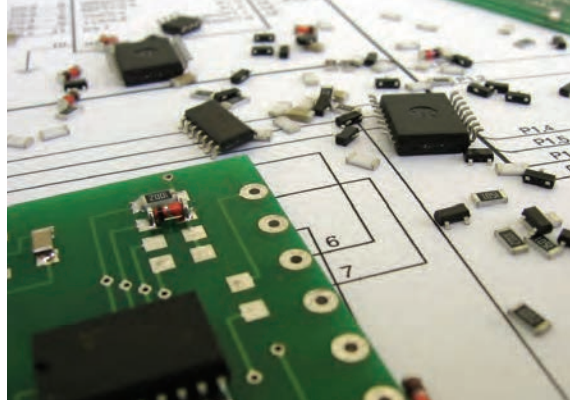
SINCE 1978 WE'VE BUILT A REPUTATION AS THE LEADER



Shipping

In-Plant Handling

Storage



WITH CARE ENOUGH

- ESD safe & cleanroom compatible thermoformed designs
- Injection molding
- Permanent ESD safe foams – custom made
- DuraStat totes designed for your system
- Conductive Fluted Plastic
- Tacki Pak component retention technology
- Corstat conductive corrugated

At CCI our passion for ESD design is combined with vertically integrated manufacturing and a large inventory of ESD safe raw materials. This allows us to stand out as the leader in both stock and custom answers for ESD problems.

IN STATIC-SAFE PACKAGING AND HANDLING MATERIALS.



Shipping



In-Plant Handling



Shipping



WHERE IN THE WEB IS ROGER?



When we rebuilt our website, Roger (the ESD guru) got lost in one of the many hallways and corridors within our new site. We haven't seen him for weeks. But then again we've got a lot of ESD gurus around here so missing one wasn't that big of a deal. But when he didn't show up for the Holiday Party people started asking questions. So will you help us find him? Just spend a little time on our website poking around, and if you run into Roger, click on him and tell us where he's at. You could win a **FREE iPad** if you find him.

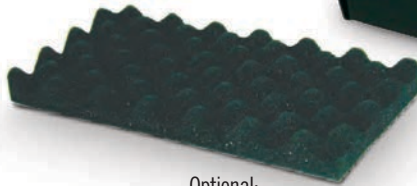
CORSTAT AND CFP MAILERS

ESD safe storage and shipping

- Made with durable materials
- Can be customized to fit specific needs
- Pink and black foam options available
- Cost savings & labor savings vs. bags



Standard:
CCI's Premium Pink Static
Dissipative Foam



Optional:
Permanent Electro-Static Dissipative
or Conductive Safe Foam



Conductive Fluted Plastic



Corstat Mailer

Static Dissipative Convuluted Foam:

Foam fingers will compress more with longer fingers or more weight

FOAM CODES
A = 3/4"F x 1/4"B
B = 1-1/8"F x 3/8"B
X = Customize

Rule to Determine Mailer Height ID:

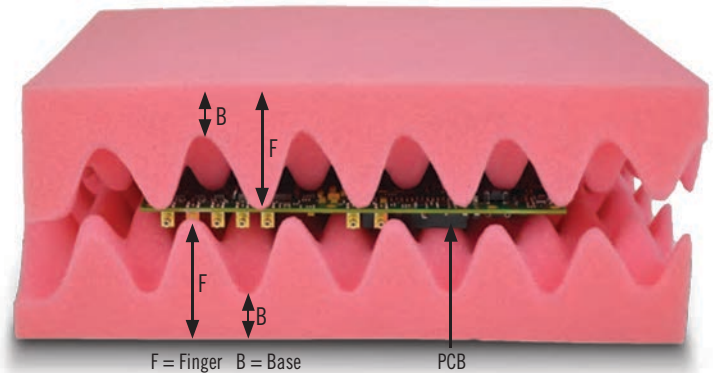
Finger + Finger + PCB = X

X - 1/4" to 1/2" (for compression) = Mailer ID

Example: "B" Foam = 1 1/8" Finger and the PCB = 3/4"
 1 1/8" (F) + 1 1/8" (F) + 3/4" (PCB) = 3"
 3" - 1/2" = 2 1/2" Mailer ID

Allow 1"-2" on all 4 Sides of the PCB
 to Determine the Length and Width

Example: PCB = 7" x 5"
 Mailer ID = 9" to 11" x 7" to 9"



STANDARD SIZES

CCI P/N	SIZE L x W x H (I.D.)	FOAM CODE	NUMBER / CASE
3631	4 x 4 x 2"	A	81
3080-1	7 x 5 x 1-1/2"	A	58
3090-2	7 x 5 x 2-1/2"	B	36
3180-3	9 x 7-1/2 x 1-1/2"	A	32
3190-4	9 x 7-1/2 x 2-1/2"	B	18
3220-5	10-1/2 x 8-1/2 x 1-1/2"	A	22
3230-6	10-1/2 x 8-1/2 x 2-1/2"	B	14
3310-7	12-1/2 x 10-1/2 x 1-1/2"	A	15
3320-8	12-1/2 x 10-1/2 x 2-1/2"	B	9
3500-10	15-1/2 x 12-1/2 x 2-1/2"	B	4
3420-13	14-7/8 x 6-5/8 x 2"	A	15
3610-12	20-1/2 x 15-1/2 x 2-1/2"	B	No Case

STANDARD SIZES

CCI P/N	SIZE L x W x H (I.D.)	FOAM CODE
3641	5-3/4 x 6-1/4 x 2-1/2"	B
3651	7 x 7 x 5"	X
3661	8 x 8 x 1-1/2"	A
3671	9-1/8 x 14-3/4 x 1-1/2"	A
3681	9 x 14 x 2-1/2"	B
3691	10 x 10 x 4-1/4"	B
3701	11 x 7-3/4 x 2-7/8"	B
3711	12 x 12 x 3"	B
3721	13-1/2 x 13-1/2 x 2"	A
3490-9	15-1/2 x 12-1/2 x 1-1/2"	A
3525-14	16 x 12-1/4 x 3-1/2"	B
3731	18 x 12 x 3-1/2"	B

STANDARD SIZES

CCI P/N	SIZE L x W x H (I.D.)	FOAM CODE
3763	16-1/2 x 10-1/2 x 6-1/2"	X
3762	17-1/4 x 10-1/2 x 5-3/4"	X
3568-15	18-7/8 x 17-5/8 x 1-3/4"	A
3765	19-1/4 x 16-3/4 x 5-5/8"	X
3741	20 x 19 x 2"	A
3767	20-1/4 x 17-3/4 x 5-5/8"	X
3600-11	20-1/2 x 15-1/2 x 1-1/2"	A
3766	21-1/4 x 12-1/2 x 4-1/2"	X
3751	23 x 16-1/2 x 5"	X
3761	24 x 21 x 5-1/2"	X
3764	26-3/4 x 6-1/4 x 6"	X
3768	20-1/4 x 17-1/2 x 4"	X

CFP options available by adding "CFP" to the beginning of part numbers listed above

Example: CFP3631 = 3631 mailer in Conductive Fluted Plastic

Add "-M" to part number for knocked down mailer with no foam

Example: 3631-M = 3631 mailer shipped knocked down and without foam

Add "L" for top foam to be laminated, "2L" for top and bottom foam to be laminated

Example: 3631-2L = 3631 mailer with foam laminated top and bottom

For more information visit: www.corstat.com/Mailers

CONDUCTIVE BLOW MOLDED PLASTIC SHIPPERS

Ideal for high-value components

- Double wall construction for durability
- ESD and physical protection
- Custom thermoformed and foam interiors are available

CCI P/N	SIZE L x W x H (I.D.)
50019	5-1/16 x 2-3/4 x 1"
50014	8-15/16 x 6-5/8 x 1-1/4"
50015	11-7/8 x 8-3/16 x 1-1/4"
50016	12-3/4 x 10-1/2 x 1-3/4"



Optional
Thermoformed
Inserts



Choose from CCI's
many foam options. Interiors can be
die-cut, router cut, or waterjet cut to fit your device

For more information visit: www.corstat.com/BlowMoldedCases

CORSTAT BULK SIMMS SHIPPERS

Minimize space and cost for smaller components

- Low cost, recyclable material
- ESD safe static shielding
- Foam minimizes damage during shipment
- Partitions can be removed to create larger cells

CCI P/N	SIZE L x W x H (I.D.)	DESCRIPTION
CSP25	14-7/8 x 6-1/16 x 1-5/8"	25 Cells 5-3/8 x 1/2 x 1-1/4" or 50 Cells 2-5/8 x 1/2 x 1-1/4"
CSP50	14-7/8 x 11-15/16 x 1-5/8"	50 Cells 5-3/8 x 1/2 x 1-1/4" or 100 Cells 2-5/8 x 1/2 x 1-1/4"



For more information visit: www.corstat.com/Simms

INJECTION MOLDED BOXES

Vastly improved design with dependable ESD protection

Improved Box Style

- Stronger hinges and latches
- Tongue and groove closure
- Thicker, stronger walls

Easy to Order – Ready to Use

- Available in small case lots
- Arrive completely assembled
- Ask about custom inserts



Thicker & stronger outer walls

NEW!



Stronger hinges and latches



Tongue and groove closure



STOCK PART NUMBER	DIMENSIONS	CASE QUANTITY	PILLOWSTAT PART NUMBER
2020	2.0 x 2.0 x .25"	200	PP2020
2525	2.56 x 2.56 x .50"	150	PP2525
2820	2.875 x 2.0 x .5"	100	PP2820
2535	3.5 x 2.56 x .50"	100	PP2535
2535-75	3.5 x 2.56 x .75"	50	PP2535-75
2535-100	3.5 x 2.56 x 1"	50	PP2535-100
3545	4.56 x 3.5 x .50"	50	PP3545

Part numbers are for box only – no foam

For more information visit: www.corstat.com/InjectionMolded

Ask us about our new medical / cleanroom boxes

PILLOWSTAT

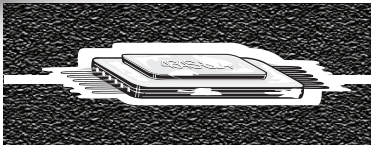
Super soft ESD foam for “Surface Mount” Technology

- Perfect for fragile, sensitive and expensive components
- ESD safe foam forms around the parts
- No tooling required
- Provides great physical protection
- Fits multiple sized components



CCI P/N	SIZE L X W X H (I.D.)	QTY/CASE*
PP2020	2 x 2 x 1/4"	200
PP2525	2-9/16 x 2-9/16 x 1/2"	150
PP2535	2-9/16 x 3-1/2 x 1/2"	100
PP3545	4-5/8 x 3-1/2 x 1/2"	50
PP7035	7 x 3-1/2 x 1/2"	50

*Custom options are available



ESD Safe Foam Forms Around the Part

For more information visit: www.corstat.com/Pillowstat

THERMOFORMED INSERTS FOR INJECTION MOLDED BOXES

Custom inserts provide exact fit with proven durability

NEW!

Benefits of Injection Molded Plastic Inserts

- Custom, cost-effective, and ESD safe
- Exact fit and part counts for your application
- Dissipative, permanently dissipative or conductive materials available
- Fitted into any stock size injection molded box
- Injection molded boxes are ESD safe, very durable, and available in small case lots

If interested, contact CCI Customer Service and they will begin the quote process

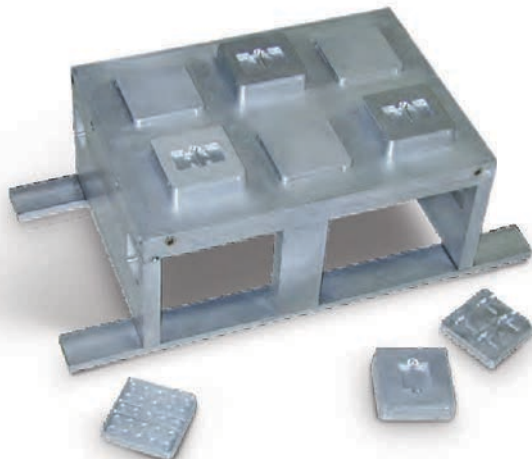


For more information visit: www.corstat.com/ThermoformedInserts

COMPAK PLASTIC INSERTS AND CUTTING DIES SAVE YOU MONEY

Benefits of Compak Inserts

- Low cost, ESD safe, custom inserts
- Utilize CCI master tooling program
- Exact fit and part counts
- Dissipative, permanently dissipative or conductive materials



CORSTAT PILLOWSTAT FOLDERS

Ideal for a wide variety of electronics assemblies

- “Form-fit” cushioning protection
- Permanently ESD safe conductive foam
- No tooling is required
- Corstat static shielding outer material

CCI STOCK PART NUMBER	IC SHIPPER DIMENSIONS
PPF2525	2-9/16 x 2-9/16 x 1/2"
PPF3515	3-1/2 x 1-1/2 x 1/2"
PPF2535	3-1/2 x 2-9/16 x 1/2"
PPF3545	4-5/8 x 3-1/2 x 1/2"
PPF7035	7 x 3-1/2 x 1/2"



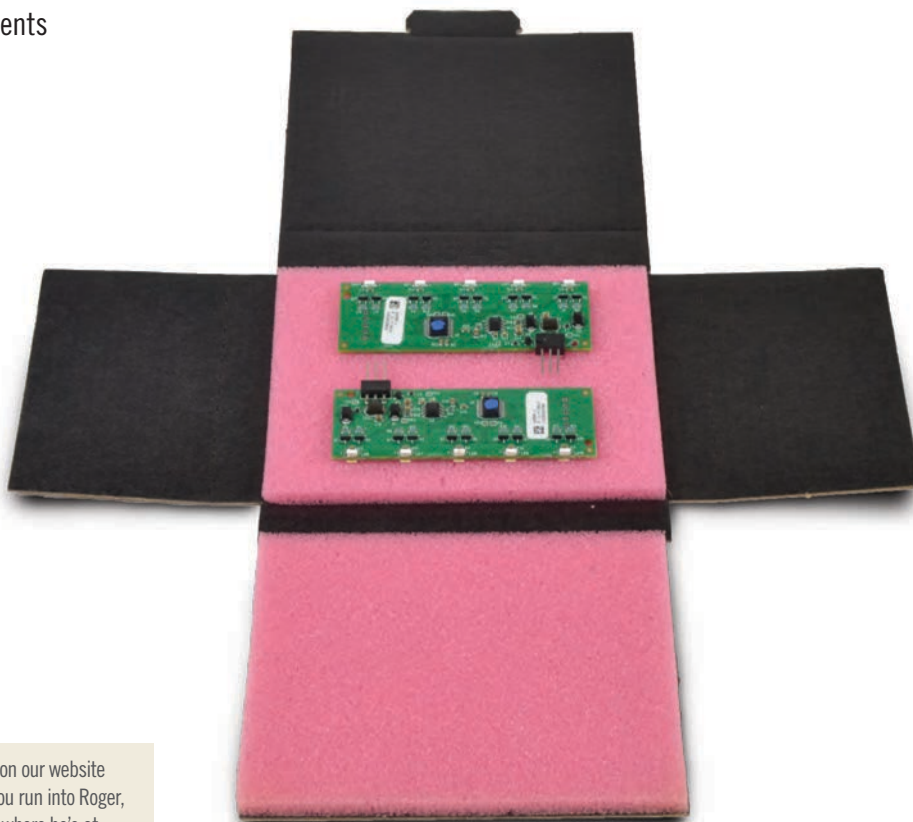
For more information visit: www.corstat.com/PillowstatFolders

CORSTAT ANTISTAT FOLDPAK

Ideal for ball grid arrays & surface mount components

- Static dissipative foam cushioning
- Corstat static shielding outer material
- No tooling is required
- Great for shipping surface mount components

CCI STOCK PART NUMBER	IC SHIPPER DIMENSIONS
CASF2525	2-9/16 x 2-9/16 x 1/2"
CASF3515	3-1/2 x 1-1/2 x 1/2"
CASF2535	3-1/2 x 2-9/16 x 1/2"
CASF3545	4-5/8 x 3-1/2 x 1/2"
CASF7035	7 x 3-1/2 x 1/2"



REWARD!
HELP US FIND ROGER
AND WIN A FREE IPAD.

Just spend a little time on our website poking around, and if you run into Roger, click on him and tell us where he's at. You could win a **FREE iPad** if you find him.

For more information visit: www.corstat.com/CorstatFoldpak

CORSTAT IC SHIPPERS

Choose the right IC Shipper for your application

NEW!



The Traditional IC Shipper

Ideal for through hole technology

- Ideal for through hole technology
- Conductive pin insertion grade bottom foam
- Pink anti-static top foam
- One way shipping/short-term use
- Static shielding Corstat mailer

CCI STOCK PART NUMBER	IC SHIPPER DIMENSIONS
IC5000	2-1/2 x 1-1/4 x 1"
IC5010	3-1/2 x 1-1/4 x 1"
IC5020	4-1/2 x 1-1/2 x 1"
IC5025	2-3/4 x 2-3/4 x 15/16"
IC5030	3-7/16 x 2-1/8 x 15/16"
IC5040	3-3/4 x 3-3/4 x 1"
IC5041	4-1/2 x 3-3/4 x 1"
IC5045	5-3/4 x 2-3/4 x 15/16"
IC5050	7 x 3-1/2 x 1"
IC5055	5-3/4 x 5-3/4 x 15/16"
IC5060	14-3/4 x 5-3/4 x 15/16"



The Super-Soft IC Shipper

Ideal for Surface Mount Technology

- Permanently dissipative foam
- Super soft cushioning
- Static shielding Corstat mailer
- Nests around small components
- Returnable/long-term use
- Ideal for small fragile assemblies

CCI STOCK PART NUMBER	IC SHIPPER DIMENSIONS
IC5000-SS	2-1/2 x 1-1/4 x 1"
IC5020-SS	4-1/2 x 1-1/2 x 1"
IC5030-SS	3-7/16 x 2-1/8 x 15/16"
IC5040-SS	3-3/4 x 3-3/4 x 1"
IC5050-SS	7 x 3-1/2 x 1"

For more information visit: www.corstat.com/ICShippers

CORSTAT COMPONENT SHIPPERS



JEDEC PADS

Use a Corstat or Conductive Fluted Plastic (CFP) pad to cover a loaded JeDEC Tray. Saves cost of using an empty tray.

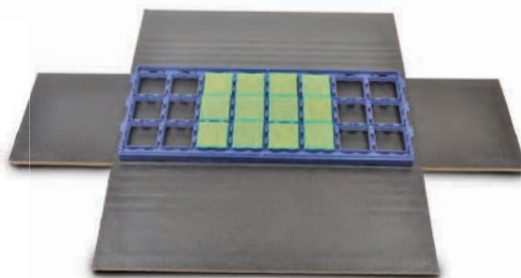
CCI P/N	SIZE L x W x H (I.D.)
C7295P	12-7/8 x 5-3/8 x 1/8"
CFP7295P	12-7/8 x 5-3/8 x 1/8"



CORSTAT REEL FOLDERS

Corstat multi-depth folder for 7" reels or 13" reels. Add foam pads as an option.

CCI P/N	SIZE L x W x H (I.D.)
CRF77	7-1/4 x 7-1/4 x 1/2 to 2"
CRF1313	13-1/8 x 13-1/8 x 1/2 to 2"



CORSTAT JEDEC FOLDER

Corstat multi-depth folder for JeDEC Tray shipping. Add foam pads or JeDEC pads as an option.

CCI P/N	SIZE L x W x H (I.D.)
CJF1251	12-7/8 x 5-3/8 x 1/4 to 2"

PERMANENT ESD SAFE FOAMS

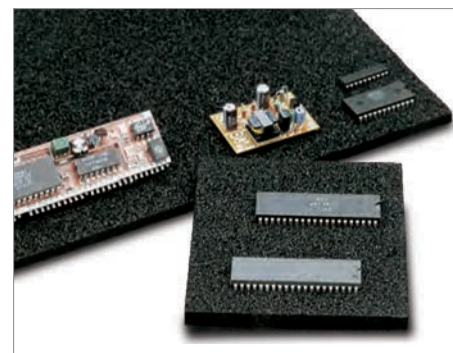
CCI offers static safe foams in sheet form that have permanent ESD safe properties. Pink foams have a variable, limited shelf life and should be used for short term usage or monitored. Permanent CCI foam products are excellent for cleanliness and longevity. The permanent black foams are ideal for shelf liners, tote cushions, long term storage, or reusable shipping applications.

CONDUCTIVE CROSSLINK PE
10E3 – 10E6 Pin Insertion Grade

CCI P/N	SIZE (O.D.)
CFM3939	39 x 39 x 1/4"
CFM1939	19-1/2 x 39 x 1/4"
CFM3939-38	39 x 39 x 3/8"
CFM2436-25	24 x 36 x 1/4"
CFM2436-38	24 x 36 x 3/8"

CONDUCTIVE URETHANE – SOFT
10E2 – 10E4 – Cushioning

CCI P/N	SIZE (O.D.)
CFPU2436-25	24 x 36 x 1/4"
CFPU2436-38	24 x 36 x 3/8"
CFPU2436-50	24 x 36 x 1/2"

DISSIPATIVE CROSSLINK PE
10E5 – 10E9 Shelf Liner / Tote Pad Grade

CCI P/N	SIZE (O.D.)
SDFM3740-25	37-1/2 x 40 x 1/4"
SDFM3740-38	37-1/2 x 40 x 3/8"
SDFM3740-50	37-1/2 x 40 x 1/2"

DISSIPATIVE URETHANE – SOFT
10E4 – 10E10 – Cushioning

CCI P/N	SIZE (O.D.)
SDPU2436-25	24 x 36 x 1/4"
SDPU2436-38	24 x 36 x 3/8"
SDPU2436-50	24 x 36 x 1/2"

CONDUCTIVE EVA
10E3 – 10E6 Low Fod / Low Abrasion

CCI P/N	SIZE (O.D.)
CFME2436-18	24 x 36 x 1/8"
CFME2436-25	24 x 36 x 1/4"
CFME2436-38	24 x 36 x 3/8"

PILLOWSTAT
10E2 – 10E5 Fragile Components

CCI P/N	SIZE (O.D.)
PPF130	34 x 21 x 1/8"
PPF260	34 x 18-1/2 x 1/4"
PPF300	34 x 18-1/2 x .30"

ADDITIONAL FOAMS ARE AVAILABLE, BUT
ARE NOT IN STOCK

FOAM NAME	ELECTRICAL SPEC
PILLOWSTAT DISSIPATIVE	10E5-10E9
CONDUCTIVE URETHANE (FIRM)	10E2-10E4
DISSIPATIVE URETHANE (FIRM)	10E4-10E9
9200 SUPER SOFT	10E2-10E4
JEFF FOAM	10E2-10E4

*These foams are subject to minimum order quantities

Need different sizes, thicknesses, custom die-cutting, waterjet cutting, shadow trays, or package designs?
Contact CCI Customer Service for design help and sampling.

CONDUCTIVE SLOT FOAM

Material handling design for effective use of workspace

- Effective use of workspace
- Fits small to medium sized boards
- Great for LED and memory boards
- Available as "sheet stock"
- Permanently conductive foam

Contact CCI Customer Service for smaller Slot Foam sizes.

CCI STOCK PART NUMBER	L x W x H	DESCRIPTION
DT6201-CSF	18 x 12 x 2" (ID)	DT6201 with Conductive Slot Foam
DT6202-CSF	24 x 18 x 2.125"	DT6201 with Conductive Slot Foam
CSF2436-PSA	24 x 36 x .5" (OD)	Conductive Slot Foam with PSA on bottom

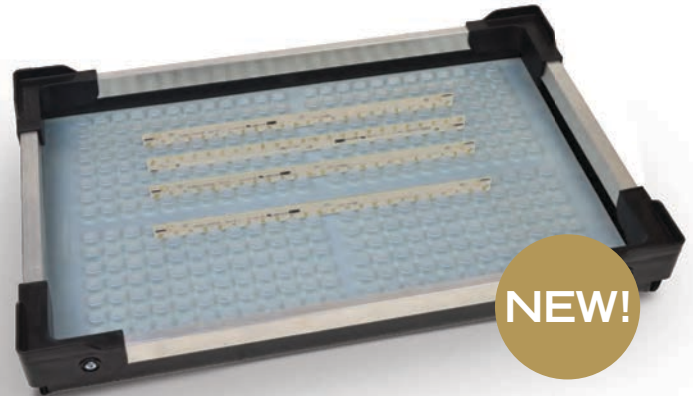


For more information visit: www.corstat.com/SlotFoam

PLASTIC GRID TRAY

Universal line of products to keep your boards organized & protected

- Boards can be placed on X or Y axis
- Trays can hold irregularly shaped boards, even round or curved boards
- PGTs can be fitted into DuraStat Trays for robust handling applications
- No tooling is required
- Permanent static dissipative surface
- Cost savings versus injection molded racks
- Ideal for memory boards and LED boards
- 0.07" spacing between 0.25" tall rows



CCI STOCK PART NUMBER	L x W x H	DESCRIPTION
PGT-0806	8.2 x 5.65 x .375"	Dissipative Grid Tray with CFP Bottom
PGT-1806	18 x 5.65 x .375"	Dissipative Grid Tray with CFP Bottom
PGT-1108	11.3 x 8.2 x .375"	Dissipative Grid Tray with CFP Bottom
DT6201-PGT	18 x 12 x 2"	DuraStat Tray with Grid Insert
DT6202-PGT	24 x 18 x 2.125"	DuraStat Tray with Grid Insert

For more information visit: www.corstat.com/PlasticGridTray

SAFE RACK

Cushioned ESD protection on a rigid hardboard backer

- Safe Rack can hold irregularly shaped boards, even round or curved boards
- 20" deep slots for boards with components close to edges
- Permanent static dissipative surface
- Cost savings versus injection molded racks
- Ideal for memory boards and LED boards



CCI STOCK PART NUMBER	L x W x H	NUMBER OF SLOTS	SPACING	DEPTH	SLOT WIDTH
SR1806	18 x 6 x .65" (OD)	20	.875	.20	.0625

For more information visit: www.corstat.com/SafeRack

TACKI PAK COMPONENT HANDLING CASES

Conductive injection molded plastic cases



TACKI PAK® SPECIFICATIONS

ESD SAFE PROPERTIES

Surface resistance of Tacki Pak® components

TP hinged boxes and trays 10^3 - 10^6 ohms

Tacki surface..... 10^4 - 10^{10} ohms

ESD safe tacki surface holds your component firmly in place throughout shipping and handling processes.

TACK LEVELS

A measure of how much force is required to remove an object from Tacki Pak® surface

Tack Level	Rating Range
Level I	2.0 - 5.0
Level II	6.0 - 10.0
Level III	10.0 - 15.0

TP2020	TP2525	TP2535	TP3545
2 x 2 x .25"	2.5625 x 2.5625 x .5"	2.5625 x 3.5 x .5"	3.5 x 4.625 x .5"
Case lots of 100	Case lots of 100	Case lots of 100	Case lots of 50
Part # TP2020-I Part # TP2020-II Part # TP2020-III	Part # TP2525-I Part # TP2525-II Part # TP2525-III	Part # TP2535-I Part # TP2535-II Part # TP2535-III	Part # TP3545-I Part # TP3545-II Part # TP3545-III

PEDESTAL TACKI PAK

Suspend and protect fragile leads



NEW!

- New design suspends your leads while holding the body on the tacki surface
- Component is held in place by permanently ESD safe foam
- No tooling is required
- Provides ESD and physical protection
- Cost saving versus "gel-type" packaging

CCI STOCK PART NUMBER	GRID-PAK ID	PEDISTAL DIAMETER
PTP2525-200	2-9/16 x 2-9/16 x 1/2"	.203
PTP2525-375	2-9/16 x 2-9/16 x 1/2"	.375
PTP2525-500	2-9/16 x 2-9/16 x 1/2"	.500
PTP2525-750	2-9/16 x 2-9/16 x 1/2"	.750
PTP3545-750	4-5/8 x 3-1/2 x 1/2"	.750

GRID-PAK

Organize and sort small components



NEW!

- Dissipative tacki coating
- Shielding case
- Non-adhesive
- IPA washable
- Fully ESD safe
- Non-contaminating
- Cost saving versus "gel-type" packaging

CCI STOCK PART NUMBER	PEDESTAL-PAK ID	PEDISTAL DIAMETER
GTP2020	2 x 2 x 1/4"	100
GTP2525	2-9/16 x 2-9/16 x 1/2"	100
GTP2535	2-9/16 x 3-1/2 x 1/2"	100
GTP3545	3-1/2 x 4-5/8 x 1/2"	50

All Grid Paks come with Tacki Level II

TACKI JEDEC STYLE TRAY

One design to fit many component sizes

- IPA cleanable
- Completely ESD safe
- Features tacki pad to secure components
- Reusable and cleanable
- Permanent ESD properties

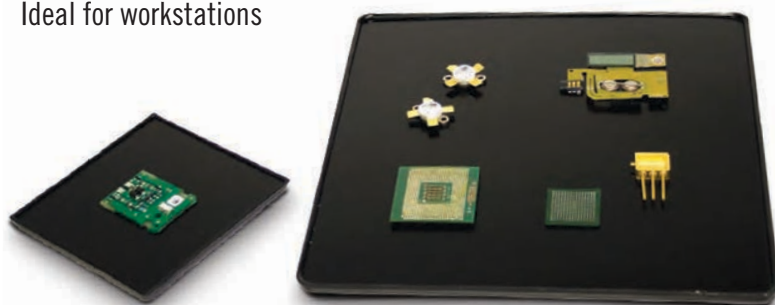
Components are secured firmly on the permanently ESD safe tacki surface

NEW!



TACKI PAK HANDLING TRAYS & SHEETS

Ideal for workstations



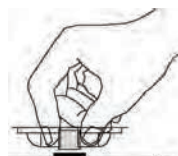
TPSHEET
20 x 17.5 x .090"
Case lots of 5
Part # TPSHEET-I
Part # TPSHEET-II

TP4040	TP9090
4 x 4 x .090"	9 x 9 x .125"
Case lots of 10	Case lots of 10
Part # TP4040-I	Part # TP9090-I
Part # TP4040-II	Part # TP9090-II

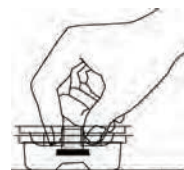
SM COMPAK SHIPPER

Protects against damage of fine pitched leads and against ESD damage. This unique design suspends leads during shipping and handling and allows for removal without touching the component.

- One package protects many sizes
- Eliminates lead damage
- Corstat shipper provides static shielding
- 1, 2, 4 and 10 packs available



Dissipative adhesive allows part to be picked up without touching operator's hands



Handle and ship component safely in dissipative insert



Squeeze dissipative plastic insert to release component safely

CCI P/N	SIZE L x W x H (I.D.)	# OF DEVICES*	QTY/CASE*
SM5025	2-3/4 x 2-3/4 x 15/16"	1	100
SM5045	5-3/4 x 2-3/4 x 15/16"	2	50
SM5055	5-3/4 x 5-3/4 x 15/16"	4	25
SM5060	14-3/4 x 5-3/4 x 15/16"	10	15

For more information visit: www.corstat.com/SMCompak

ADJUSTABLE REEL TOTES

Provides adjustability for your different reel sizes

- Space utilization
- Compatibility with vertical carousels
- 24" depth fits standard carousel systems
- Standard CCI product
- Custom bar coding options are available

CCI Stock Part Number	Tote Size (O.D.)	Cell Size	Number of Cells
Reel 7-13	23-1/4 x 15-5/8 x 6-3/8"	1 x 7 x 6-1/2"	40
Reel 7-13	23-1/4 x 15-5/8 x 6-3/8"	1 x 13 x 6-1/2"	20
Reel 15	23-1/4 x 15-5/8 x 6-3/8"	1 x 14-7/8 x 6-1/2"	20



REEL STORAGE

Physical protection meets ESD protection

- Economical
- Eliminate insulative plain corrugated
- Reduce bagging
- ESD shielding
- ESD program compliance



CCI P/N	SIZE: L x W x H (O.D.)	BUNDLE*
1829	18 x 2 x 9"	25
CFP 1829	18 x 2 x 9"	25
1849	18 x 4 x 9"	10
CFP 1849	18 x 4 x 9"	10
1869	18 x 6 x 9"	10
CFP 1869	18 x 6 x 9"	10
2429	24 x 2 x 9"	10
CFP 2429	24 x 2 x 9"	10
2449	24 x 4 x 9"	10
CFP 2449	24 x 4 x 9"	10

FIFO REEL STORAGE

First in, first out system

- Line-bent and sonic-welded construction
- Oldest reels are always used first
- Thumb notch for easy access
- 7" and 13" versions
- Hard plastic makes for rigid design
- Strong, durable, & permanently conductive

CCI P/N	Description	SIZE L x W x H (I.D.)	Raised Base Dimension
FIFO-7	7" .090 Conductive Styrene FIFO Bin	7.375 x 7.375 x 8.5" OD	1"
FIFO-13	13" .090 Conductive Styrene FIFO Bin	13.375 x 13.375 x 8.5" OD	1"



For more information visit: www.corstat.com/ReelStorage

BENT-OVER REEL STORAGE SOLUTIONS

Providing ESD and physical protection for your reels

- Double wall construction
- Increased strength and durability
- Corstat version ships flat
- Adjustable partitions
- ESD protection



CCI Stock Part Number	Bin Sizes	Ships Knocked-Down	Ships Assembled
Reel-7B0	17-3/4 x 9-7/8 x 7-3/8"	X	
CFP Reel-7B0	17-3/4 x 9-7/8 x 7-3/8"		X
Reel-13B0	17-3/4 x 15-7/8 x 13-3/8"	X	
CFP Reel-13B0	17-3/4 x 15-7/8 x 13-3/8"		X
Reel-7B0-23	23 x 9-7/8 x 7-3/8"	X	
CFP Reel-7B0-23	23 x 9-7/8 x 7-3/8"		X
Reel-13B0-23	23 x 15-7/8 x 13-3/8"	X	
CFP Reel-13B0-23	23 x 15-7/8 x 13-3/8"		X



REWARD!
HELP US FIND ROGER
AND WIN A FREE IPAD.

Just spend a little time on our website poking around, and if you run into Roger, click on him and tell us where he's at. You could win a **FREE iPad** if you find him.

CORSTAT & CFP REEL TOTES

Increased durability and flexibility

- Durable Corstat or CFP construction
- Plastic ribbing holds reels in place
- Wire frame reinforced
- Ships assembled
- Feature handles and cover



CCI P/N	Description Corstat	SIZE L x W x H (I.D.)
RB-2007	7" Corstat Reel Storage Bin	19-3/4 x 7 x 7"
RB-1313	13" Corstat Reel Storage Bin	19-3/4 x 13 x 13"
CFP RB-2007	7" CFP Reel Storage Bin	19-3/4 x 7 x 7"
CFP RB-1313	13" CFP Reel Storage Bin	19-3/4 x 13 x 13"

For more information visit: www.corstat.com/ReelStorage

CORSTAT AND CFP BINS

In-plant protection for Dip Tubes, ICs, and other components

- Cleans up your storage areas
- Eliminates the need for bags
- Permanently ESD safe
- Cost savings & labor savings vs. bags
- Available in open or stackable formats



OPEN BINS

CCI P/N	SIZE L x W x H (O.D.)
AR 1050	4-1/4 x 3-5/8 x 2-5/8"
AR 1060	5-3/4 x 3-5/8 x 2-5/8"
1150	7 x 16 x 4"
0900	9 x 4 x 4-1/2"
0950	12 x 2 x 4-1/2"
1001	12 x 4 x 4-3/8"
1003	12 x 6 x 4-1/2"
1010	12 x 8 x 4-1/4"
1020	12 x 12 x 4-1/2"
1151	12-5/8 x 9-1/4 x 2-1/8"
1167	15 x 12 x 4-1/2"
1165	15-1/4 x 4-1/4 x 14-3/4"
1170	19 x 2-1/4 x 4-1/8"
1051	18 x 2 x 4-1/2"
1052	18 x 4 x 4-1/2"
1053	18 x 6 x 4-1/2"
1054	18 x 8 x 4-1/2"
1062	18 x 12 x 4-1/2"
1829	18 x 2 x 9"
1849	18 x 4 x 9"

OPEN BINS

CCI P/N	SIZE L x W x H (O.D.)
1152	18-5/8 x 4-1/4 x 6-5/8"
1153	18-5/8 x 8-1/4 x 6-5/8"
1154	18-5/8 x 15-1/4 x 6-5/8"
1155	22-1/8 x 4-1/4 x 4-5/8"
1156	22-1/8 x 6-1/4 x 4-5/8"
1157	22-1/8 x 8-1/4 x 4-5/8"
1171	24-3/4 x 2-1/4 x 4-1/8"
1158	24-1/2 x 3-1/2 x 6-3/4"
1159	24 x 4 x 4-1/2"
1160	24-3/4 x 6-1/4 x 8-1/4"
1161	24 x 11-1/4 x 7-3/4"
1162	24-3/4 x 12-1/4 x 4-1/4"
1163	24-5/8 x 14-1/4 x 4-1/8"
1105	24-3/4 x 4-1/4 x 4-5/8"
1125	24-3/4 x 6 x 4"
1144	24-3/4 x 8-1/4 x 4-5/8"
1164	25-5/8 x 2-1/4 x 1-5/8"
2429	24 x 2 x 9"
2449	24 x 4 x 9"

STACKABLE BINS

CCI P/N	SIZE L x W x H (O.D.)
2035	12 x 4 x 4-1/2"
2065	12 x 7 x 4-1/2"
2085	12 x 12 x 4-1/2"
2095	18 x 4 x 4-1/2"
2105	18 x 7 x 4-1/2"
2155	24-3/4 x 4-1/4 x 4-3/4"
2185	24 x 6 x 4-5/8"
2015	24-7/8 x 8 x 4-1/2"

Custom document holders are available in our
"PCB Board Handling" section on page 27

*Bins ship in bundles of 25. \$10.00 bundle break charge.

Above sizes also available in
Conductive Fluted Plastic.
Add "CFP" in front of the part number.



KITTING TRAYS

A durable in-plant handling and storage solution

CCI P/N	SIZE L x W x H (O.D.)	# OF CAVITIES	CAVITY SIZE (I.D.)	COVER #
13030	10-1/2 x 8-3/4 x 1-1/2"	12	2-1/4 x 2 x 1-3/16"	13031
13040	14-1/2 x 10-1/8 x 1-3/4"	9	3-1/2 x 2-3/4 x 1-1/4"	13041
13050	14-1/8 x 10-1/8 x 1-3/4"	12	3 x 3 x 1-1/4"	13051
13060	16-1/8 x 10-5/8 x 1-7/8"	9 3	3-1/8 x 2-3/4 x 1-1/4" 3-7/8 x 2-3/4 x 1-1/4"	13061
13080	14-3/8 x 10-1/8 x 1-7/8"	20	2-3/8 x 2 x 1-1/4"	13081
13090	8-1/4 x 6-1/4 x 1-5/8"	12	1-1/2 x 1-1/2 x 1-1/8"	13091
13025	9-1/4 x 7-1/4 x 1-3/4"	4	3-3/4 x 2-3/4 x 1-1/8"	13026
13035	13-1/4 x 13-1/4 x 13/16"	25	2-3/8 x 2-3/8 x 1"	13036
13045	18-3/8 x 16-3/8 x 1-1/4"	20	4-1/8 x 2-13/16 x 1"	13046
13055	10-1/2 x 8-3/4 x 13/16"	20	2 x 1 x 7/8"	13031
1230-10	9-1/4 x 7-3/8 x 1-1/8"	10	3 x 1-1/2 x 1"	NA
1230-5	9-1/4 x 7-3/8 x 1-1/8"	5	6-1/2 x 1-1/2 x 1"	NA
2015CT	20-3/4 x 15-1/4 x 3/4"	1		NA

For more information visit: www.corstat.com/KittingTrays

- Versatile in-plant handling & storage
- Durable ESD safe plastic
- Nestable with covers available
- Dissipative and cleanroom versions available



TOOL CUBBY

Workstation-friendly storage solution

- Versatile design
- Workstation friendly
- Durable, sturdy, and long-lasting
- Provides ESD protection
- Economical
- ESD properties are permanent

CCI Stock Part Number	Tool Cubby Dimensions
TC 1176	11-3/4 X 8-1/2 X 6-1/4" OD



NEW!

For more information visit: www.corstat.com/ToolCubby

DRAWER CABINET

Storage and organization solution

- Multiple cabinet and drawer sizes
- Permanently ESD safe
- Helps organize your workstations
- Economical option for small components
- Rigid double wall construction

CCI P/N	SIZE L x W x H (O.D.)	NUMBER OF DRAWERS	NUMBER OF CELLS PER DRAWER	CELL SIZE (I.D.)
DC1230	10 x 7-5/8 x 7-7/8"	5	10	3 x 1-1/2 x 1"
DC1231	10 x 7-5/8 x 7-7/8"	5	5	6-1/2 x 1-1/2 x 1"
DC1330	11-3/8 x 9 x 9-1/4"	5	12	2-1/4 x 2" x 1-3/16"
DC1340	15-1/4 x 10-3/4 x 11-1/4"	5	9	3-1/2 x 2-3/4 x 1-1/4"
DC1350	15-1/4 x 10-3/4 x 11-1/4"	5	12	3 x 3 x 1-1/4"



For more information visit: www.corstat.com/DrawerCabinet

SHADOW TRAYS

An organized, workstation-friendly ESD solution

- Completely customized to your specifications
- First article provided to ensure proper form & function
- Available with plastic top and/or bottom pad
- No minimum quantities
- An ESD safe way to organize your workstation



Shadow Trays are completely customizable to your specifications.
CCI works from photos or tracings of your layout.

ESD CART COVERS

Ensuring your cart's contents are static-safe

- Customizable to any size or requirement
- Custom printing available
- Protects product inside from ESD damage
- Straps hold cover up when pulling product from carts



Custom velcro document holders can be added

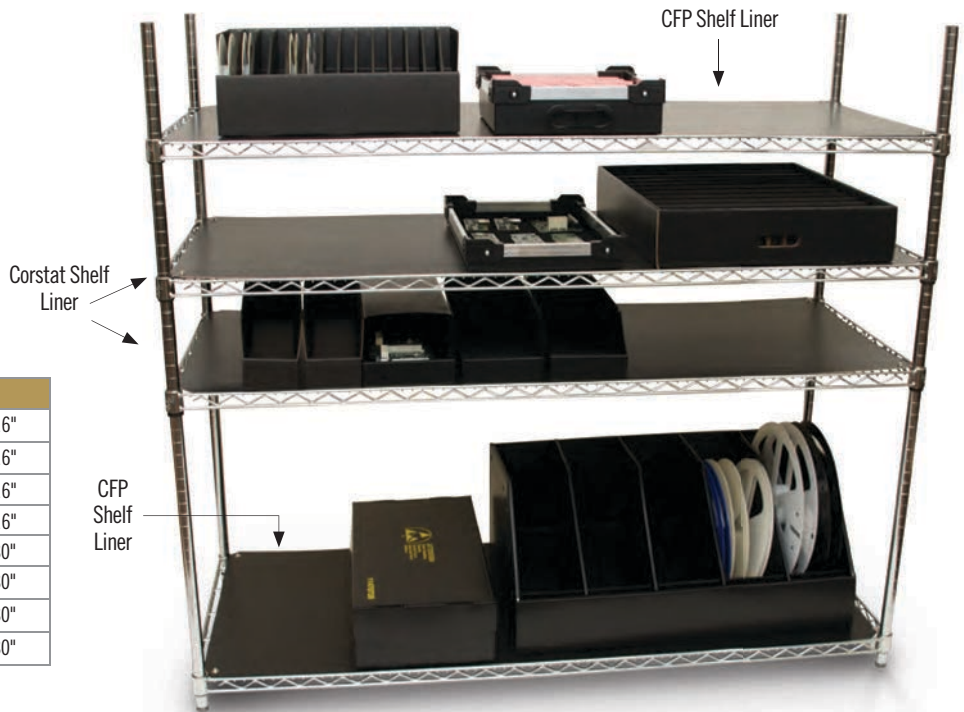


SHELF LINERS

ESD safe shelf liners to fit a variety of sizes

- Economical and ESD safe
- Available in Corstat and CFP
- Angled corners will fit standard shelves
- Two snaps will fit wrist straps & ground cords

CCI P/N	ITEM	SIZE (O.D.)
SL1836-FP	CFP Shelf Liner	17-1/2 x 35-1/2 x 3/16"
SL2335-FP	CFP Shelf Liner	23-1/2 x 35-1/2 x 3/16"
SL2347-FP	CFP Shelf Liner	23-1/2 x 47-1/2 x 3/16"
SL2359-FP	CFP Shelf Liner	23-1/2 x 59-1/2 x 3/16"
SL2359-CT	Corstat Shelf Liner	23-1/2 x 59-1/2 x .080"
SL2347-CT	Corstat Shelf Liner	23-1/2 x 47-1/2 x .080"
SL1836-CT	Corstat Shelf Liner	17-1/2 x 35-1/2 x .080"
SL2436-CT	Corstat Shelf Liner	23-1/2 x 35-1/2 x .080"



ESD SAFE WASTEBASKETS

Additional protection for your workstation

- Available in Corstat and CFP
- Eliminates static charge
- Standard sizes
- No tooling necessary

CCI P/N	Size	Material
CWB	14-1/4 x 12-3/4 x 13-5/8"	Corstat
CFPWB	14 x 10 x 14"	CFP

Wastebaskets ship knocked down flat



Corrugated Waste Basket



Conductive Fluted Plastic Waste Basket

ESD TAPE

Secure your packaging with ESD Tape

CCI Stock Part Number	Tape Width	Tape Length
ESDT-2	2"	118'

Sold in sleeves of 6



- Non-charge generating
- Safe for all ESD applications
- Multiple uses

For more information visit: www.corstat.com/ESDTape

NEST TRAYS

Ideal for moving sensitive assemblies through storage and material handling processes

- Reduces storage space when empty
- Storage and material handling solution
- Highly reusable and recyclable

CORSTAT NEST TRAYS

CCI P/N	SIZE L x W x H (O.D.) TOP	(I.D.) BOTTOM
7000*	12 x 9 x 4"	8-11/16 x 5-3/4"
7010	18 x 12 x 6"	15 x 8-1/2"
7020	27-1/4 x 12 x 6"	24-1/8 x 8-1/2"
7030	27-1/4 x 18 x 6"	24-1/8 x 14-5/8"

Add "CFP" in front of the part number for the Conductive Fluted Plastic version

*Ships Knocked Down Flat

For more information visit: www.corstat.com/nesttrays



CORSTACKER & DURASTAT TRAYS

Strong and durable option for handling circuit boards

CORSTACKER TRAYS

CCI P/N	SIZE (I.D.)	DESCRIPTION
6201A	18 x 11-3/8 x 1-3/4"	Corstat trays with corner stackers and 1/8" thick crosslink foam attached to Corstat stiffener pad for extra durability.
6202A	24 x 18 x 2-1/8"	

DURASTAT TRAYS

CCI P/N	SIZE (I.D.)	DESCRIPTION
DT6200A	10-1/2 x 8-5/16 x 1-3/4"	DuraStat 4mm CFP tray with corner stackers and 1/8" thick crosslink foam attached to Corstat stiffener pad for extra durability.
DT6201A	18 x 11-3/8 x 1-3/4"	
DT6202A	24 x 18 x 2-1/8"	

For more information visit: www.corstat.com/BoardHandling

- Constructed with durable Corstat material
- Double walled and molded corners assure secure stacking
- Highly reusable and recyclable
- Includes 1/8" crosslink static dissipative foam pad laminated to a Corstat stiffener pad



PROCESS TRAYS

Ideal for assembly, transport, and storage of sensitive boards and devices

- Corstat doublewall tray
- Conductive crosslink foam attached
- Conductive thermoformed version
- Conductive crosslink foam loose

CCI P/N	DESCRIPTION
13100	18 x 12" Corstat Tray with 1/4" Conductive Crosslink Foam attached
13101	18 x 12" CP Conductive Vacuum Formed Tray with Conductive Crosslink
13102	18 x 12" x 1/4" Conductive Crosslink Foam
13103	18 x 24" Corstat Tray with 1/4" Conductive Crosslink Foam attached



For more information visit: www.corstat.com/processtrays

CORSTAT IPH SERIES

Corstat conductive material

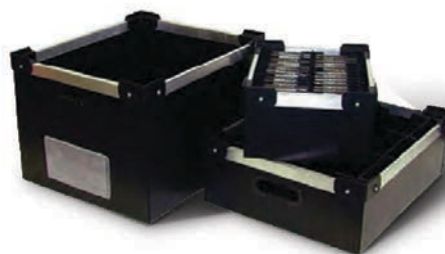
- Lowest cost – great static shielding
- Bent over, double walls for durability



DURASTAT CFP TOTES

Conductive Fluted Plastic

- Durable, conductive fluted plastic
- Lightweight construction includes corner stackers



Two great tote options for handling ESD sensitive PCB's. Ask us for an ROI analysis!

- 37 different Corstat tote sizes and 40 different DuraStat tote sizes
- Both styles fit 533 different Corstat partition cell configurations – will fit nearly any board family
- Totes are durable and built to last in-plant or interplant
- ESD safe while eliminating shielding bags and bagging layer
- Clean bent over Corstat partitions

Three ways to find the perfect in-plant handler for your application:

1. Select Cell Sizes

See cell sizes on pages 24-25 and match your board size. Check for tote sizes below.

2. Check online

www.corstat.com/inplanthandlers features an easy in-plant handler query. Just input your board size and see your options.

3. Let us do the work

Call or email your CCI distributor or CCI customer service person with your board sizes and let us do the selection work for you.

Note: for correct measurement—height is vertical, length is horizontal, and thickness is the cell width.

*STATIC SAFE standard foam tote pads and tote accessories available.

CCI P/N	TOTE SIZE (ID) (L x T x H)	DuraStat P/N
4003*	18 x 10 x 18-7/8"	DT4003
4090*	18 x 10 x 18-7/8"	DT4090
4018	18-3/8 x 12-3/8 x 18-3/4"	DT4018
4015	22-3/4 x 12-1/2 x 15-1/2"	DT4015
4020	18-3/4 x 14 x 15"	DT4020
4530	18-5/8 x 15 x 14-1/4"	DT4530
4000-4	22-3/4 x 12-1/2 x 14"	DT4000-4
4000*	22-3/4 x 12-1/2 x 13"	DT4100
4080*	22-3/4 x 12-1/2 x 13"	DT4080
4830	18-3/8 x 12-3/8 x 13"	DT4830
4212	21-1/2 x 18-1/2 x 12-1/4"	DT4212
4430	18-5/8 x 15 x 12"	DT4430
4110	17-3/4 x 14-3/4 x 11-1/4"	DT4110
4100*	16-5/8 x 9-3/4 x 11-1/4"	DT4100
4005*	16-5/8 x 9-3/4 x 11-1/4"	DT4005
4820	18-3/8 x 12-3/8 x 11"	DT4820
4030	23-3/4 x 12-1/4 x 10-3/4"	DT4030
4050	20-1/4 x 16 x 10-1/2"	DT4050
4210	21-1/2 x 18-1/2 x 10-1/4"	DT4210
4330	18-5/8 x 15 x 10"	DT4330
4008	16-5/8 x 9-3/4 x 9-1/4"	DT4008

CCI P/N	TOTE SIZE (ID) (L x T x H)	DuraStat P/N
4810	18-3/8 x 12-3/8 x 9"	DT4810
4208	21-1/2 x 18-1/2 x 8-1/4"	DT4208
4140	22-7/8 x 12-7/8 x 8"	DT4140
4130	18-5/8 x 15 x 8"	DT4130
4007*	16-5/8 x 9-3/4 x 7-1/2"	DT4007
4060*	16-5/8 x 9-3/4 x 7-1/2"	DT4060
4800	18-3/8 x 12-3/8 x 7"	DT4800
4040	18-1/2 x 10 x 6-3/4"	DT4040
4206	21-1/2 x 18-1/2 x 6-1/4"	DT4206
4001	22-3/4 x 12-1/2 x 6-1/4"	DT4001
4009	18-1/2 x 13-3/4 x 6-1/8"	DT4009
4070	18-1/2 x 13-3/4 x 6-1/8"	DT4070
4230	18-5/8 x 15 x 5-7/8"	DT4230
4006	16-5/8 x 9-3/4 x 5-5/8"	DT4006
4120	19-1/2 x 12-3/8 x 5-1/2"	DT4120
4012*	10-3/8 x 10-3/8 x 5-3/8"	DT4012
4204	21-1/2 x 18-1/2 x 4-1/4"	DT4204
4011*	10-3/8 x 10-3/8 x 4"	DT4011
4004	16-5/8 x 9-3/4 x 3-3/4"	DT4004
4002	16-5/8 x 9-3/4 x 2-3/4"	DT4002
4202	21-1/2 x 18-1/2 x 2-1/4"	DT4202

*Part numbers share a tote, but have different partition layouts

IN-PLANT HANDLER SERIES

Cell sizes arranged by height of cell

CCIP/N	Cell Size - LxWxH	# OF CELLS
4003	16x3/4x18-3/4"	10
4003-1	16x1-3/4x18-3/4"	5
4090	8-1/4x7/8x18-3/4"	15
4090-1	8-1/4x2x18-3/4"	7
4018	7-7/8x1x18-3/4"	20
4018-1	7-7/8x2-1/4x18-3/4"	10
4018-2	16x1x18-3/4"	10
4018-3	16x2-1/4x18-3/4"	5
4015	4-7/8x1x15-1/4"	40
4015-1	4-7/8x2-1/4x15-1/4"	20
4015-2	5-1/4x1-5/8x15-1/4"	24
4015-3	5-1/4x3-5/8x15-1/4"	12
4015-4	6-1/2x1x15-1/4"	30
4015-5	6-1/2x2-1/4x15-1/4"	15
4015-6	10x1x15-1/4"	20
4015-7	10x2-1/4x15-1/4"	10
4015-8	10-3/4x1-5/8x15-1/4"	12
4015-9	10-3/4x3-5/8x15-1/4"	6
4015-10	20-1/4x1x15-1/4"	10
4015-11	20-1/4x2-1/4x15-1/4"	5
4020	12x1-3/4x15"	10
4020-1	12x3-3/4x15"	5
4530	4x1-1/4x14"	40
4530-1	4x2-3/4x14"	20
4530-2	5-3/8x1-1/4x14"	30
4530-3	5-3/8x2-3/4x14"	15
4530-5	6-1/4x1-5/8x14"	20
4530-7	6-1/4x3-1/2x14"	10
4530-9	8-1/8x1-1/4x14"	20
4530-10	8-1/8x2-3/4x14"	10
4530-12	12-3/4x1-5/8x14"	10
4530-14	12-3/4x3-1/2x14"	5
4530-16	16-5/8x1-1/4x14"	10
4530-17	16-5/8x2-3/4x14"	5
4000-4	4-7/8x1x14"	40
4000-4-5	4-7/8x2-1/4x14"	20
4000-4-1	6-1/2x1x14"	30
4000-4-6	6-1/2x2-1/4x14"	15
4000-4-2	10x1x14"	20
4000-4-7	10x2-1/4x14"	10
4000-4-3	20-1/4x1x14"	10
4000-4-8	20-1/4x2-1/4x14"	5
4000	4-7/8x1x13"	40
4000-5	4-7/8x2-1/4x13"	20
4080-1	5-1/4x1-1/4x13"	30
4080-3	5-1/4x2-3/4x13"	14

CCIP/N	Cell Size - LxWxH	# OF CELLS
4000-1	6-1/2x1x13"	30
4000-6	6-1/2x2-1/4x13"	15
4000-2	10x1x13"	20
4000-7	10x2-1/4x13"	10
4080-2	10-3/4x1-1/4x13"	15
4080	10-3/4x2-3/4x13"	7
4000-3	20-1/4x1x13"	10
4000-8	20-1/4x2-1/4x13"	5
4830	7-7/8x1x12-3/4"	20
4830-1	7-7/8x2-1/4x12-3/4"	10
4830-2	16x1x12-3/4"	10
4830-3	16x2-1/4x12-3/4"	5
4430	4x1-1/4x12-1/4"	40
4430-1	4x2-3/4x12-1/4"	20
4430-2	5-3/8x1-1/4x12-1/4"	30
4430-3	5-3/8x2-3/4x12-1/4"	15
4430-5	6-1/4x1-5/8x12-1/4"	20
4430-7	6-1/4x3-1/2x12-1/4"	10
4430-9	8-1/8x1-1/4x12-1/4"	20
4430-10	8-1/8x2-3/4x12-1/4"	10
4430-12	12-3/4x1-5/8x12-1/4"	10
4430-14	12-3/4x3-1/2x12-1/4"	5
4430-16	16-5/8x1-1/4x12-1/4"	10
4430-17	16-5/8x2-3/4x12-1/4"	5
4110	6x1-1/4x11-1/4"	20
4110-5	6x2-3/4x11-1/4"	10
4110-1	7-1/2x1-1/4x11-1/4"	20
4110-6	7-1/2x2-3/4x11-1/4"	10
4110-2	12-1/4x1-1/4x11-1/4"	10
4110-3	13-3/4x1-1/4x11-1/4"	10
4110-4	15-1/4x1-1/4x11-1/4"	10
4110-7	12-1/4x2-3/4x11-1/4"	5
4110-8	13-3/4x2-3/4x11-1/4"	5
4110-9	15-1/4x2-3/4x11-1/4"	5
4005	4-11/16x3/4x11-1/4"	30
4005-3	4-11/16x1-3/4x11-1/4"	15
4005-1	7-1/8x3/4x11-1/4"	20
4005-4	7-1/8x1-3/4x11-1/4"	10
4100	8x3/4x11-1/4"	15
4100-1	8x1-3/4x11-1/4"	7
4005-2	14-1/2x3/4x11-1/4"	10
4005-5	14-1/2x1-3/4x11-1/4"	5
4820	7-7/8x1x10-3/4"	20
4820-1	7-7/8x2-1/4x10-3/4"	10
4820-2	16x1x10-3/4"	10
4820-3	16x2-1/4x10-3/4"	5

CCIP/N	Cell Size - LxWxH	# OF CELLS
4030-5	5-1/4x1x10-3/4"	40
4030-6	5-1/4x2-1/4x10-3/4"	20
4030-7	7x1x10-3/4"	30
4030-8	7x2-1/4x10-3/4"	15
4030-2	10-3/4x1x10-3/4"	20
4030-4	10-3/4x2-1/4x10-3/4"	10
4030-1	21-3/4x1x10-3/4"	10
4030-3	21-3/4x2-1/4x10-3/4"	5
4050	18-1/4x1-3/8x10-1/2"	10
4050-1	18-1/4x3x10-1/2"	5
4330	4x1-1/4x10"	40
4330-1	4x2-3/4x10"	20
4330-2	5-3/8x1-1/4x10"	30
4330-3	5-3/8x2-3/4x10"	15
4330-5	6-1/4x1-5/8x10"	20
4330-7	6-1/4x3-1/2x10"	10
4330-9	8-1/8x1-1/4x10"	20
4330-10	8-1/8x2-3/4x10"	10
4330-12	12-3/4x1-5/8x10"	10
4330-14	12-3/4x3-1/2x10"	5
4330-16	16-5/8x1-1/4x10"	10
4330-17	16-5/8x2-3/4x10"	5
4008-1	3-7/8x3/4x9-1/4"	30
4008-2	3-7/8x1-3/4x9-1/4"	14
4008-3	3-1/2x1-3/4x9-1/4"	20
4008-4	4-11/16x3/4x9-1/4"	30
4008-5	4-11/16x1-3/4x9-1/4"	15
4008-6	7-1/8x3/4x9-1/4"	20
4008-7	7-1/8x1-3/4x9-1/4"	10
4008-8	8x3/4x9-1/4"	15
4008-9	8x1-3/4x9-1/4"	7
4008-10	14-1/2x3/4x9-1/4"	10
4008-11	14-1/2x1-5/8x9-1/4"	5
4810	7-7/8x1x8-3/4"	20
4810-1	7-7/8x2-1/4x8-3/4"	10
4810-2	16x1x8-3/4"	10
4810-3	16x2-1/4x8-3/4"	5
4140	4-7/8x1x8"	40
4140-1	4-7/8x2-1/4x8"	20
4140-2	5-1/4x1-5/8x8"	24
4140-3	5-1/4x3-5/8x8"	12
4140-4	6-1/2x1x8"	30
4140-5	6-1/2x2-1/4x8"	15
4140-6	10x1x8"	20
4140-7	10x2-1/4x8"	10
4140-8	10-3/4x1-5/8x8"	12

CCIP/N	Cell Size - LxWxH	# OF CELLS
4140-9	10-3/4x3-5/8x8"	6
4140-10	20-1/4x1x8"	10
4140-11	20-1/4x2-1/4x8"	5
4130-17	4x1-1/4x8"	40
4130-16	4x2-3/4x8"	20
4130	5-1/2x1-1/4x8"	30
4130-2	5-1/2x2-3/4x8"	15
4130-5	6-1/4x1-5/8x8"	20
4130-7	6-1/2x1-3/4x8"	10
4130-9	8-1/8x1-1/4x8"	20
4130-10	8-1/8x2-3/4x8"	10
4130-12	12-3/4x1-5/8x8"	10
4130-14	12-3/4x3-1/2x8"	5
4130-1	17x1-1/4x8"	10
4130-3	17x2-3/4x8"	5
4007-6	3-1/2x1-3/4x7-1/2"	20
4060-1	3-7/8x3/4x7-1/2"	30
4060-3	3-7/8x1-3/4x7-1/2"	14
4007	4-11/16x3/4x7-1/2"	30
4007-3	4-11/16x1-3/4x7-1/2"	15
4007-1	7-1/8x3/4x7-1/2"	20
4007-4	7-1/8x1-3/4x7-1/2"	10
4060	8x3/4x7-1/2"	15
4060-2	8x1-3/4x7-1/2"	7
4007-2	14-1/2x3/4x7-1/2"	10
4007-5	14-1/2x1-5/8x7-1/2"	5
4800	7-7/8x1x6-3/4"	20
4800-1	7-7/8x2-1/4x6-3/4"	10
4800-2	16x1x6-3/4"	10
4800-3	16x2-1/4x6-3/4"	5
4040-1	4-1/4x1-7/8x6-3/4"	16
4040-3	4-1/4x4x6-3/4"	8
4040	8-3/4x1-7/8x6-3/4"	8
4040-2	8-3/4x4x6-3/4"	4
4001	4-7/8x1x6"	40
4001-1	4-7/8x2-1/4x6"	20
4001-2	5-1/4x1-5/8x6"	24
4001-3	5-1/4x3-5/8x6"	12
4001-4	6-1/2x1x6"	30
4001-5	6-1/2x2-1/4x6"	15
4001-6	10x1x6"	20
4001-7	10x2-1/4x6"	10
4001-8	10-3/4x1-5/8x6"	12
4001-9	10-3/4x3-5/8x6"	6
4001-10	20-1/4x1x6"	10
4001-11	20-1/4x2-1/4x6"	5
4009	5-3/4x1-5/8x6-1/8"	20
4009-2	5-3/4x3-1/2x6-1/8"	10
4070-1	5-7/8x1x6-1/8"	30
4070-3	5-7/8x2-1/4x6-1/8"	14
4009-1	11-3/4x1-5/8x6-1/8"	10
4009-3	11-3/4x3-1/2x6-1/8"	5
4070	12x1x6-1/8"	15
4070-2	12x2-1/4x6-1/8"	7

For more information visit: www.corstat.com/Inplanhandlers

IN-PLANT HANDLER SERIES

Cell sizes arranged by height of cell

CCIP/N	Cell Size - LxTxH	# OF CELLS
4230	4 x 1-1/4 x 5-7/8"	40
4230-1	4 x 2-3/4 x 5-7/8"	20
4230-2	5-3/8 x 1-1/4 x 5-7/8"	30
4230-3	5-3/8 x 2-3/4 x 5-7/8"	15
4230-6	6-1/4 x 1-5/8 x 5-7/8"	20
4230-7	6-1/4 x 3-1/2 x 5-7/8"	10
4230-8	8-3/4 x 1-1/4 x 5-7/8"	20
4230-5	8-7/8 x 2-3/4 x 5-7/8"	10
4230-4	12-7/8 x 1-7/8 x 5-7/8"	8
4230-20	1-7/8 x 1-1/4 x 5-7/8"	80
4230-19	2-3/4 x 1-7/8 x 5-7/8"	40
4230-18	3-7/8 x 1-1/4 x 5-7/8"	40
4230-15	4-1/4 x 1-7/8 x 5-7/8"	16
4230-14	5-3/4 x 1-7/8 x 5-7/8"	16
4230-13	6-1/4 x 1-7/8 x 5-7/8"	16
4230-9	8-1/4 x 1-1/4 x 5-7/8"	20
4230-10	8-1/4 x 2-3/4 x 5-7/8"	10

CCIP/N	Cell Size - LxTxH	# OF CELLS
4230-11	12-3/4 x 1-5/8 x 5-7/8"	10
4230-17	16-5/8 x 2-3/4 x 5-7/8"	5
4230-12	12-3/4 x 3-1/2 x 5-7/8"	5
4230-16	16-5/8 x 1-1/4 x 5-7/8"	10
4006	2-1/4 x 3/4 x 5-3/8"	60
4006-1	2-1/4 x 1-3/4 x 5-3/8"	30
4006-2	4-3/4 x 3/4 x 5-3/8"	30
4006-3	4-3/4 x 1-3/4 x 5-3/8"	15
4006-4	7-1/4 x 3/4 x 5-3/8"	20
4006-5	7-1/4 x 1-3/4 x 5-3/8"	10
4006-6	14-3/4 x 3/4 x 5-3/8"	10
4006-7	14-3/4 x 1-3/4 x 5-3/8"	5
4120	2-7/8 x 15/16 x 5-1/2"	60
4120-4	2-7/8 x 2-1/8 x 5-1/2"	30
4120-1	5-7/8 x 15/16 x 5-1/2"	30
4120-5	5-7/8 x 2-1/8 x 5-1/2"	15
4120-2	9 x 15/16 x 5-1/2"	20

CCIP/N	Cell Size - LxTxH	# OF CELLS
4120-6	9 x 2-1/8 x 5-1/2"	10
4120-3	18-1/8 x 15/16 x 5-1/2"	10
4120-7	18-1/8 x 2-1/8 x 5-1/2"	5
4012	3/4 x 3/4 x 5-3/8"	100
4012-1	3/4 x 1-3/4 x 5-3/8"	50
4011	3/4 x 3/4 x 3-7/8"	100
4011-1	3/4 x 1-3/4 x 3-7/8"	50
4004	2-1/4 x 3/4 x 3-3/4"	60
4004-1	2-1/4 x 1-3/4 x 3-3/4"	30
4004-2	4-3/4 x 3/4 x 3-3/4"	30
4004-3	4-3/4 x 1-3/4 x 3-3/4"	15
4004-4	7-1/4 x 3/4 x 3-3/4"	20
4004-5	7-1/4 x 1-3/4 x 3-3/4"	10
4004-6	14-3/4 x 3/4 x 3-3/4"	10
4004-7	14-3/4 x 1-3/4 x 3-3/4"	5
4002-8	1-7/16 x 1-1/4 x 2-1/2"	60
4002	2-1/4 x 3/4 x 2-1/2"	60
4002-1	2-1/4 x 1-3/4 x 2-1/2"	30

CCIP/N	Cell Size - LxTxH	# OF CELLS
4002-9	2-5/8 x 1-3/8 x 2-1/2"	30
4002-10	3-1/16 x 1-1/4 x 2-1/2"	30
4002-11	3-1/16 x 2-11/16 x 2-1/2"	15
4002-2	4-3/4 x 3/4 x 2-1/2"	30
4002-3	4-3/4 x 1-3/4 x 2-1/2"	15
4002-14	4-5/8 x 1-1/4 x 2-1/2"	18
4002-15	4-5/8 x 2-11/16 x 2-1/2"	9
4002-12	4-1/16 x 1-7/16 x 2-1/2"	20
4002-13	4-1/16 x 3-1/16 x 2-1/2"	10
4002-4	7-1/4 x 3/4 x 2-1/2"	20
4002-5	7-1/4 x 1-3/4 x 2-1/2"	10
4002-16	7-3/4 x 1-1/4 x 2-1/2"	12
4002-17	7-3/4 x 2-11/16 x 2-1/2"	6
4002-18	8-5/16 x 1-7/16 x 2-1/2"	10
4002-19	8-5/16 x 2-11/16 x 2-1/2"	5
4002-6	14-3/4 x 3/4 x 2-1/2"	10
4002-7	14-3/4 x 1-3/4 x 2-1/2"	5
4002-20	15-13/16 x 1-1/4 x 2-1/2"	6

SUPER ADJUSTABLE SERIES

Totes that bring you the most options, period

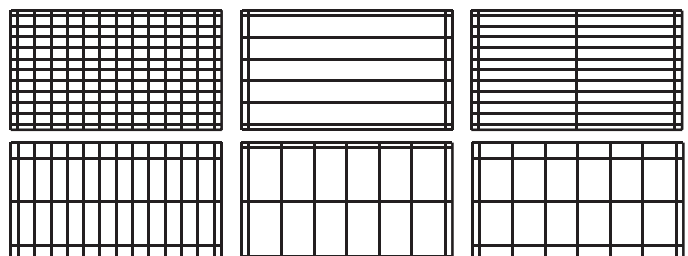
21-1/2 x 18-1/2 inside dimension totes

Basic Cell Size		Cell Height and Part Number					
Length	Width	2-1/4"	4-1/4"	6-1/4"	8-1/4"	10-1/4"	12-1/4"
1-3/4"	1"	4202-1	4204-1	4206-1	4208-1	4210-1	4212-1
1-3/4"	2-3/4"	4202-2	4204-2	4206-2	4208-2	4210-2	4212-2
1-3/4"	3-1/2"	4202-3	4204-3	4206-3	4208-3	4210-3	4212-3
3-3/4"	1"	4202-4	4204-4	4206-4	4208-4	4210-4	4212-4
3-3/4"	2-1/4"	4202-5	4204-5	4206-5	4208-5	4210-5	4212-5
3-3/4"	3-1/2"	4204-6	4204-6	4206-6	4208-6	4210-6	4212-6
5-3/4"	1"	4202-7	4204-7	4206-7	4208-7	4210-7	4212-7
5-3/4"	2-1/4"	4202-8	4204-8	4206-8	4208-8	4210-8	4212-8
5-3/4"	2-1/2"	4202-9	4204-9	4206-9	4208-9	4210-9	4212-9
7-3/4"	1"	4202-10	4204-10	4206-10	4208-10	4210-10	4212-10
7-3/4"	2-1/4"	4202-11	4204-11	4206-11	4208-11	4210-11	4212-11
7-3/4"	3-1/2"	4202-12	4204-12	4206-12	4208-12	4210-12	4212-12
9-3/4"	1"	4202-13	4204-13	4206-13	4208-13	4210-13	4212-13
9-3/4"	2-1/4"	4202-14	4204-14	4206-14	4208-14	4210-14	4212-14
9-3/4"	3-1/2"	4202-15	4204-15	4206-15	4208-15	4210-15	4212-15
11-3/4"	1"	4202-16	4204-16	4206-16	4208-16	4210-16	4212-16
11-3/4"	2-1/4"	4202-17	4204-17	4206-17	4208-17	4210-17	4212-17
11-3/4"	3-1/2"	4202-18	4204-18	4206-18	4208-18	4210-18	4212-18
13-3/4"	1"	4202-19	4204-19	4206-19	4208-19	4210-19	4212-19
13-3/4"	2-1/4"	4202-20	4204-20	4206-20	4208-20	4210-20	4212-20
13-3/4"	3-1/2"	4202-21	4204-21	4206-21	4208-21	4210-21	4212-21
15-3/4"	1"	4202-22	4204-22	4206-22	4208-22	4210-22	4212-22
15-3/4"	2-1/4"	4202-23	4204-23	4206-23	4208-23	4210-23	4212-23
15-3/4"	3-1/2"	4202-24	4204-24	4206-24	4208-24	4210-24	4212-24
17-3/4"	1"	4202-25	4204-25	4206-25	4208-25	4210-25	4212-25
17-3/4"	2-1/4"	4202-26	4204-26	4206-26	4208-26	4210-26	4212-26
17-3/4"	3-1/2"	4202-27	4204-27	4206-27	4208-27	4210-27	4212-27
19-3/4"	1"	4202-28	4204-28	4206-28	4208-28	4210-28	4212-28
19-3/4"	2-1/4"	4202-29	4204-29	4206-29	4208-29	4210-29	4212-29
19-3/4"	3-1/2"	4202-30	4204-30	4206-30	4208-30	4210-30	4212-30

16-5/8 x 9-3/4 inside dimension totes

Basic Cell Size		Cell Height and Part Number			
Length	Width	2-3/4"	3-3/4"	5-5/8"	7-1/2"
1-1/8"	11/16"	4002-SA-1	4004-SA-1	4006-SA-1	4007-SA-1
2-7/16"	11/16"	4002-SA-2	4004-SA-2	4006-SA-2	4007-SA-2
3-3/4"	11/16"	4002-SA-3	4004-SA-3	4006-SA-3	4007-SA-3
5-1/16"	11/16"	4002-SA-4	4004-SA-4	4006-SA-4	4007-SA-4
7-11/16"	11/16"	4002-SA-5	4004-SA-5	4006-SA-5	4007-SA-5
15-9/16"	11/16"	4002-SA-6	4004-SA-6	4006-SA-6	4007-SA-6
1-1/8"	1-9/16"	4002-SA-7	4004-SA-7	4006-SA-7	4007-SA-7
2-7/16"	1-9/16"	4002-SA-8	4004-SA-8	4006-SA-8	4007-SA-8
3-3/4"	1-9/16"	4002-SA-9	4004-SA-9	4006-SA-9	4007-SA-9
5-1/16"	1-9/16"	4002-SA-10	4004-SA-10	4006-SA-10	4007-SA-10
7-11/16"	1-9/16"	4002-SA-11	4004-SA-11	4006-SA-11	4007-SA-11
15-9/16"	1-9/16"	4002-SA-12	4004-SA-12	4006-SA-12	4007-SA-12
1-1/8"	2-7/16"	4002-SA-13	4004-SA-13	4006-SA-13	4007-SA-13
1-1/8"	3-5/16"	4002-SA-14	4004-SA-14	4006-SA-14	4007-SA-14
1-1/8"	4-3/16"	4002-SA-15	4004-SA-15	4006-SA-15	4007-SA-15
1-1/8"	8-9/16"	4002-SA-16	4004-SA-16	4006-SA-16	4007-SA-16
2-7/16"	1-9/16"	4002-SA-17	4004-SA-17	4006-SA-17	4007-SA-17
2-7/16"	3-5/16"	4002-SA-18	4004-SA-18	4006-SA-18	4007-SA-18
2-7/16"	4-3/16"	4002-SA-19	4004-SA-19	4006-SA-19	4007-SA-19
2-7/16"	8-9/16"	4002-SA-20	4004-SA-20	4006-SA-20	4007-SA-20

NEW!



Thousands of different cell configurations...
All created to eliminate ESD.

For more information visit: www.corstat.com/SuperAdjustable

ADJUSTABLE GUIDE TOTE

One of CCI's newest and most innovative designs yet

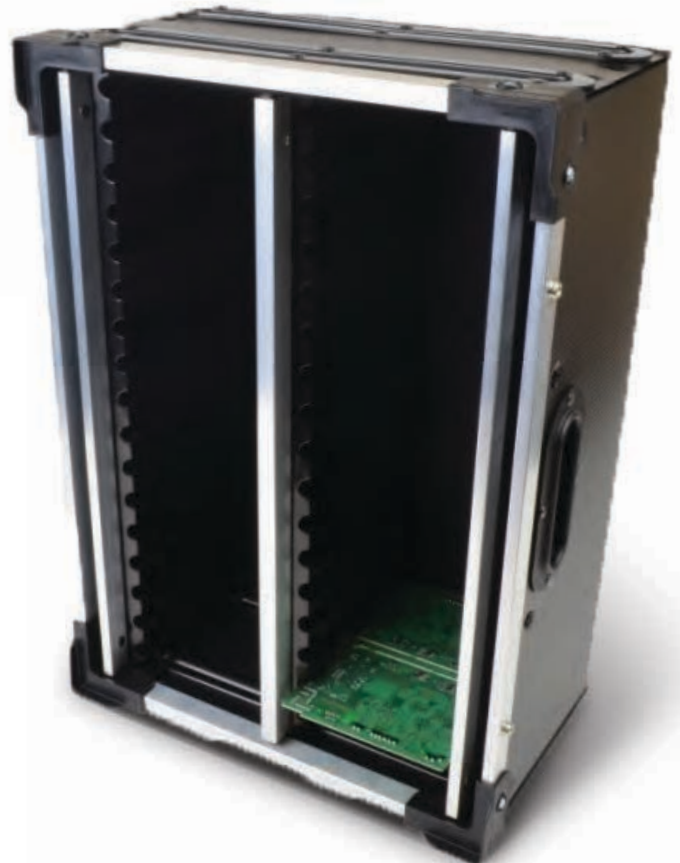
- Features a completely ESD safe package
- Conductive ribbing holds boards securely
- Totes are stackable & can be placed on their ends
- Durable material, with permanent ESD properties
- Adjustable ribs accommodate multiple board sizes
- Adjustability brings increased ROI
- Half the cost of traditional options
- Built to fit your needs



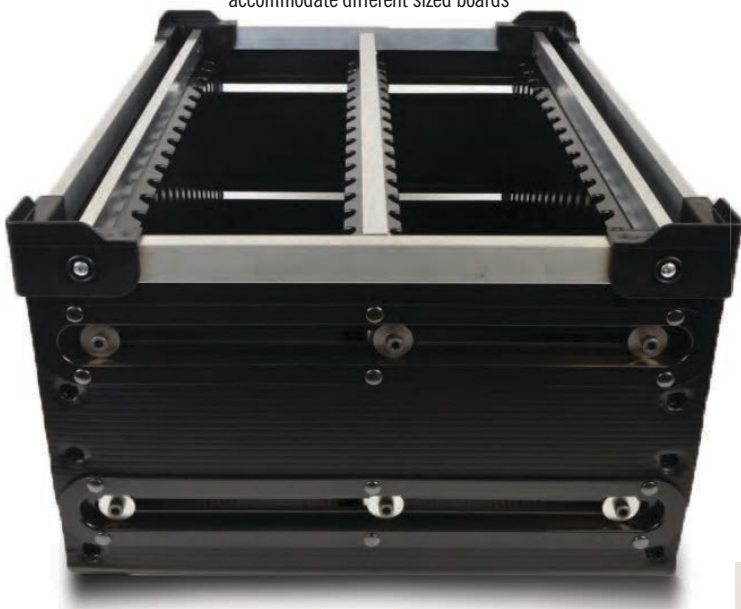
At CCI, we are always searching for new ways to solve your problems with ESD. One need that we commonly hear about is a way to handle and store multiple sizes of boards in one container. In the past, this may have been nearly impossible to find. Now, CCI has developed a completely adjustable, ESD safe tote that can handle different sized boards. This tote mixes a completely ESD safe solution with the adjustability to hold many different sized boards.

If you are interested in learning more about this product, please consult with CCI's Customer Service Department.

Each tote can be stacked vertically



Each partition is adjustable to accommodate different sized boards



REWARD!
HELP US FIND ROGER
AND WIN A FREE IPAD.

Just spend a little time on our website poking around, and if you run into Roger, click on him and tell us where he's at. You could win a **FREE iPad** if you find him.

TOTE ACCESSORIES

Static safe standard foam pads for totes

- Multiple ESD foam options for IPHs
- 1/4" thick for top & bottom protection
- Sizes are CCI standard parts
- No tooling charges required



CONDUCTIVE CROSSLINK POLYETHYLENE - .25" THICK PAD SIZES		
CCI P/N	SIZE	FITS TOTE SIZE #
XLP25-1	23-1/2 x 12"	4030
XLP25-2	22-1/2 x 12-1/4"	4001, 4015, 4040
XLP25-3	21-1/4 x 18-1/4"	4202, 4204, 4206, 4208, 4210, 4212
XLP25-4	20 x 15-3/4"	4050
XLP25-5	19-1/4 x 12-1/4"	4120
XLP25-6	18-1/2 x 14-3/4"	4110, 4130, 4230, 4330, 4430, 4530
XLP25-7	18-1/4 x 13-1/2"	4009, 4020
XLP25-8	18-1/4 x 12-1/4"	4018, 4800, 4810, 4820, 4830
XLP25-9	18-1/4 x 9-3/4"	4040
XLP25-10	17-3/4 x 9-3/4"	4003
XLP25-11	16-1/2 x 9-1/2"	4002, 4004, 4005, 4006, 4007, 4008
XLP25-12	10-1/4 x 10-1/4"	4011, 4012

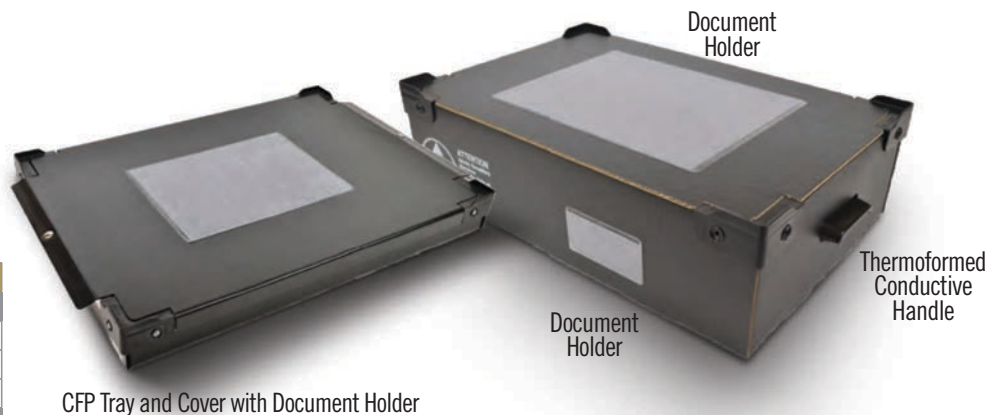
SOFTSHIELD CONDUCTIVE URETHANE - .25" THICK PAD SIZES		
CCI P/N	SIZE	FITS TOTE SIZE #
SSP25-1	23-1/2 x 12"	4030
SSP25-2	22-1/2 x 12-1/4"	4001, 4015, 4040
SSP25-3	21-1/4 x 18-1/4"	4202, 4204, 4206, 4208, 4210, 4212
SSP25-4	20 x 15-3/4"	4050
SSP25-5	19-1/4 x 12-1/4"	4120
SSP25-6	18-1/2 x 14-3/4"	4110, 4130, 4230, 4330, 4430, 4530
SSP25-7	18-1/4 x 13-1/2"	4009, 4020
SSP25-8	18-1/4 x 12-1/4"	4018, 4800, 4810, 4820, 4830
SSP25-9	18-1/4 x 9-3/4"	4040
SSP25-10	17-3/4 x 9-3/4"	4003
SSP25-11	16-1/2 x 9-1/2"	4002, 4004, 4005, 4006, 4007, 4008
SSP25-12	10-1/4 x 10-1/4"	4011, 4012

DOCUMENT HOLDERS

CCI's document holder stock sizes

- Static dissipative surface
- Non-charge generating
- PSA backing
- Apply to any totes or bins

CCI P/N	DESCRIPTION
4101	Thermoformed Conductive Handle
DH4021	4 x 2" Document Holder
DH4022	7-1/2 x 4" Document Holder
DH4023	4-3/4 x 3-3/4" Document Holder
DH4025	8-1/2 x 11" Document Holder



PLACARDS

CCI's ESD safe placard stock sizes

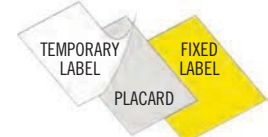
CCI Stock Part Number	Size (Usable Space)
P24	2" x 4"
P35	3" x 5"
P75	7" x 5"

- Stocked sizes sold in packages of 100
- Ask CCI about getting any custom size you need
- Use low-tack adhesive for removeable labels
- Static dissipative surface
- Non-charge generating
- PSA backing
- Apply to any totes or bins



CCI's Placards can be used multiple ways:

1. Placard used as label locator.



2. Placard over a permanent label.



CHECK OUT OUR REDESIGNED WEBSITE.

The stock catalog you're holding is just a fraction of the solutions that we offer at CCI. Due to all the sizes, configurations, materials and designs we use, it is impossible to show them all. Plus, we're constantly adding new products to our stock inventory.

For more detailed information and a current and complete list of products, visit our recently updated website – www.corstat.com:

- We've added online tools that help you quickly find the products and configurations you need for your specific application
- We have a new products gallery where you'll see our latest additions
- We have tips, suggestions and spec sheets for products
- We keep you up-to-date on industry news and best practices
- Plus you might find Where in the Web is Roger, and WIN A FREE iPad

When we set out to redesign our website, we wanted to make it easier for people to find stock and custom ESD safe shipping and handling materials. We think we've done that. But we won't know for sure until you say so. So check us out and let us know how we did.



conductive containers, inc.

4500 Quebec Avenue North
New Hope, MN 55428

Phone: 763.537.2090 • Fax: 763.537.1738

www.corstat.com