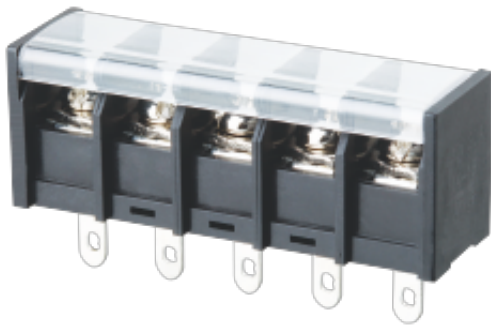


WJ68H  
BARRIER TERMINAL BLOCK



Material

Screws	M4.0 Steel Ni plated
Pin Header	Copper alloy , Sn plated
Housing	PA66 , UL94V-0

Electrical

Standard	UL	IEC
Rated Voltage	300V	500V
Rated current	20A	24A
Wire range	22-12AWG	2.5mm <sup>2</sup>
Contact Resistance	20mΩ	
Insulation resistance	500MΩ/DC500V	
Withstanding voltage	AC2000V/1Min	
Temp.range	-40°C~+105°C	
Torque	12.24Kgf.cm/1.2Nm/10.6Lb.in	

Other Data

Pitch/Poles [mm]/[P]	11.0/2-22
----------------------	-----------

WJ68H  
BARRIER TERMINAL BLOCK

Operating temperature [°C]	-40°C~+105°C
Torque	12.24Kgf.cm/1.2Nm/10.6Lb.in

Dimensions

PCB opening diagram

