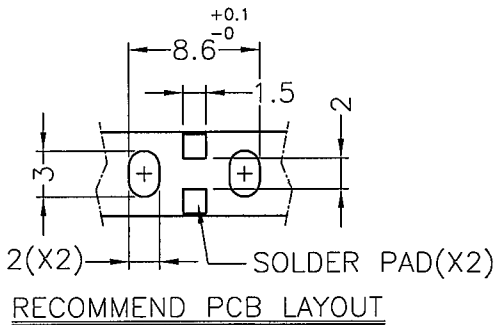
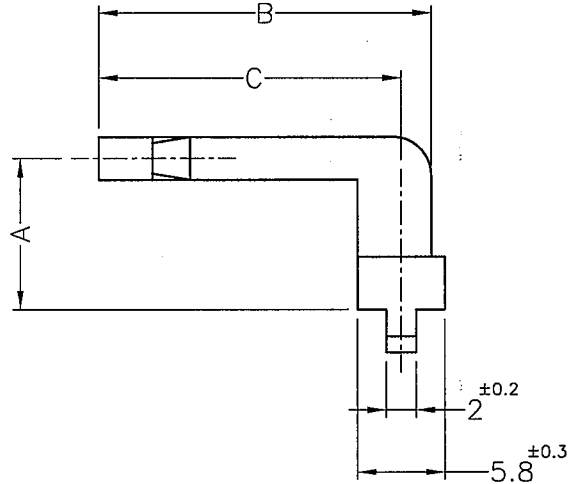
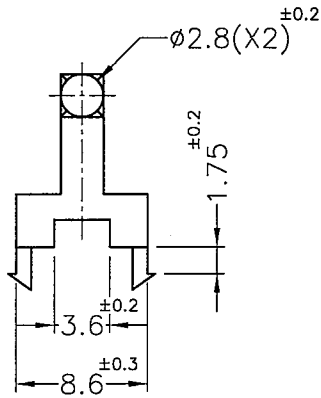


DIM.	TOL
5mm DOWN	±0.2
5~20mm	±0.3
20~40mm	±0.4
40~60mm	±0.5
60~100mm	±0.8
100mm UP	±1.0



PART NO.	A	B	C
LPE1-5-16	5	16	14
LPE1-5-19	5	19	17
LPE1-5-22	5	22	20
LPE1-10-16	10	16	14
LPE1-10-19	10	19	17
LPE1-10-22	10	22	20
LPE1-15-16	15	16	14
LPE1-15-19	15	19	17
LPE1-15-22	15	22	20

NOTE: 1. SHRINKING IS NORMAL STATUS.

內縮為正常現象。

2. MADE OF EQUIVALENT MATERIAL.

均可使用同等材質。



康揚企業股份有限公司

KANG YANG HARDWARE ENTERPRISE CO., LTD.

康揚塑膠(東莞)有限公司

KANG YANG PLASTIC(DONG GUAN)CO., LTD.

康哲電腦配件(吳江)有限公司

KANG CHE COMPUTER COMPONENTS(WUJIANG)CO., LTD.

PROPRIETARY AND CONFIDENTIAL THE INFORMATION CONTAINED IN THIS DRAWING IS THE SOLE PROPERTY OF KANG YANG HARDWARE ENTERPRISE CO. ANY REPRODUCTION IN PART OR AS A WHOLE WITHOUT THE WRITTEN PERMISSION OF KANG YANG HARDWARE ENTERPRISE CO. IS PROHIBITED. DO NOT SCALE DRAWING	DATE	2003.06.05	TITLE	LIGHT PIPE	DWG. NO.	PART NO.	
	DRAWN	SCOTT	MATERIAL	PC UL94V-2	LPE1-XX-XX	SEE ABOVE	
	CHECKED	李柏賓	COLOR	TRANSPARENT	FINISH	SIZE	REV
	APPROVED	Kang	UNLESS OTHERWISE SPECIFIED TOLERANCE:	SEE ABOVE	SCALE: 2:1	UNIT	SHEET 1 OF 1
						mm	A